

**Official Recapitulation
Primary Election**

Votes cast in the County of Washington,
Mississippi on the 2nd day of August 2011

The Democratic Election Commission will prepare three (3) Official Recapitulation Sheets containing the vote of the entire county by precinct. They will forward one copy to Delbert Rosemann, Secretary of State, 401 MISSISSIPPI ST, JACKSON MS 39201, file one copy with the State Executive Committee, file one copy with the Circuit Clerk of the County and keep the third copy for their records.

We, the undersigned Democratic Election Commission, hereby certify that the foregoing is a true and complete recapitulation and statement of the results of a Primary Election held on the 2nd day of August 2011, in the County of Washington, Mississippi, and that the foregoing correctly shows the votes cast for each person and for the office set opposite the respective names at said election.

In testimony whereof, witness our hands this 12th day of August 2011.

The County of Washington, Mississippi.

Alfred Robinson Sr

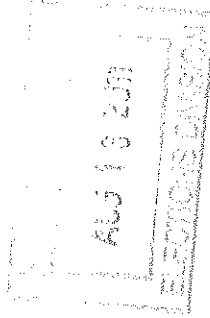
Chairman, Democratic Executive

Theresa L. Biles

Secretary, Democratic Executive

D'Andre Williams

Member, Democratic Executive Committee



Official Recapitulation WASHINGTON COUNTY PRIMARY ELECTION		The Democratic Election Commission will prepare three (3) Official Recapitulation Sheets containing the vote of the entire county by precinct. They will forward one copy to Delbert Hosemann, Secretary of State, 401 MISSISSIPPI ST. JACKSON MS 39201, file one copy with the State Executive Committee, file one copy with the Circuit Clerk of the County and keep the third copy for their records.											
Votes cast in the County of Washington, Mississippi on the 2nd day of August 2011		Names of Election Precincts											
		St. James Episcopal Church	Governant Presbyterian Church	Swifwater Baptist Church	Glen Allan Library	Ward's Recreation Center	Buster Brown Community Center	Arcola City Hall	Potter House	Lampa Drive	GREENVILLE DAYCARE CENTER	Extension Building	
State Of Mississippi-Governor													
William Bond Compton, Jr.	Democrat	34	31	1	21	26	37	13	3	19	37	23	
Johnny L. Dupree	Democrat	217	83	4	49	143	190	65	7	54	138	67	
Bill Lockett	Democrat	282	238	24	60	229	227	52	11	64	99	64	
Guy Dale Shaw	Democrat	21	30	0	11	12	19	5	0	7	12	7	
State Of Mississippi-Attorney General													
Jim Hood	Democrat	510	359	29	105	384	434	122	21	142	268	144	
State Of Mississippi-Commissioner Of Agriculture & Commerce													
Joel Gill	Democrat	456	315	26	91	350	387	109	18	123	242	132	
State Of Mississippi-Commissioner Of Insurance													
Louis Fondren	Democrat	457	316	26	93	357	379	107	20	125	236	131	
State Of Mississippi-State Treasurer													
Connie Moran	Democrat	464	306	24	93	366	390	109	18	122	243	139	
Public Service Commissioner-Central District													
Bruce Burton	Democrat	236	217	19	52	186	187	56	12	64	113	61	
Addie Green	Democrat	241	105	5	48	180	226	58	9	64	145	81	
Transportation Commissioner-Central District													
Dorothy Benford	Democrat	361	205	15	66	255	305	76	16	93	210	113	
Marshand Crisler	Democrat	134	125	8	32	128	122	45	6	34	53	36	
District Attorney 04-District 4													

Official Recapitulation WASHINGTON COUNTY PRIMARY ELECTION		The Democratic Election Commission will prepare three (3) Official Recapitulation Sheets containing the vote of the entire county by precinct. They will forward one copy to Delbert Hosemann, Secretary of State, 401 MISSISSIPPI ST. JACKSON MS 39201, file one copy with the State Executive Committee, file one copy with the Circuit Clerk of the County and keep the third copy for their records.									
Names of Election Precincts		Old American Legion	Metcalfe Municipal Building	Elks Lodge	Ireland Health Department	Ireland Rotary Club	Hollandale City Hall	Parlove	Grace Methodist Church	Greenville Industrial College	TOTAL
State Of Mississippi-Governor											
William Bond Compton, Jr.	Democrat	56	38	79	58	35	43	3	38	50	645
Johnny L. Dupree	Democrat	183	129	316	243	146	228	7	163	154	2586
Bill Luckett	Democrat	220	63	335	209	164	158	13	154	142	2808
Guy Dale Shaw	Democrat	23	8	24	22	13	26	3	12	16	271
State Of Mississippi-Attorney General											
Jim Hood	Democrat	436	195	691	469	309	418	24	352	335	5747
State Of Mississippi-Commissioner Of Agriculture & Commerce											
Joel Gill	Democrat	405	175	622	410	274	373	21	320	288	5137
State Of Mississippi-Commissioner Of Insurance											
Louis Fondren	Democrat	399	168	619	408	265	379	22	322	291	5120
State Of Mississippi-State Treasurer											
Connie Moran	Democrat	393	179	618	421	262	382	21	322	291	5163
Public Service Commissioner-Central District											
Bruce Burton	Democrat	195	75	267	208	143	237	16	152	114	2610
Addie Green	Democrat	233	116	392	257	162	163	8	184	197	2874
Transportation Commissioner-Central District											
Dorothy Benford	Democrat	319	158	498	325	213	307	14	268	249	4066
Marshand Crisler	Democrat	124	48	191	152	96	110	10	76	92	1622
District Attorney 04-District 4											

Official Recapitulation		The Democratic Election Commission will prepare three (3) Official Recapitulation Sheets containing the vote of the entire county by precinct. They will forward one copy to Delbert Hosemann, Secretary of State, 401 MISSISSIPPI ST. JACKSON MS 39201, file one copy with the State Executive Committee, file one copy with the Circuit Clerk of the County and keep the third copy for their records.												
WASHINGTON COUNTY PRIMARY ELECTION		Names of Election Precincts												
Votes cast in the County of Washington, Mississippi on the 2nd day of August 2011		St. James Episcopal Church	Covenant Presbyterian	Swiftwater Baptist Church	Glen Allan Library	Ward's Recreation Center	Buster Brown Community Center	Arcola City Hall	Potter House	Tampa Drive	GREENVILLE DAYCARE CENTER	Extension Building		
W. Dewayne Richardson	Democrat	495	341	27	99	377	421	115	18	135	257	133		
State Senate 12-District 12														
Derrick T. Simmons	Democrat	163	47	20	X	X	466	X	21	39	306	159		
State Senate 22-District 22														
Mala Brooks	Democrat	168	70	1	60	152	4	88	X	49	X	X		
George 'Boo' Hollowell	Democrat	240	267	8	59	279	1	52	X	60	X	X		
State House Of Rep 28-District 28														
David Dallas	Democrat	X	X	X	X	X	X	X	X	X	X	X		
State House Of Rep 34-District 34														
Linda Whittington	Democrat	0	X	0	X	13	X	1	X	X	X	X		
State House Of Rep 49-District 49														
Willie L. Bailey	Democrat	379	207	20	X	4	217	X	21	148	290	23		
State House Of Rep 50-District 50														
John W. Hines	Democrat	73	120	X	X	8	234	75	X	X	0	135		
State House Of Rep 51-District 51														
Gary Farmer	Democrat	X	X	4	42	X	X	X	X	X	X	X		
Whitfield Harrington	Democrat	X	X	0	27	X	X	X	X	X	X	X		
Rufus E. 'Pete' Straughter	Democrat	X	X	1	33	X	X	X	X	X	X	X		
Washington-Chancery Clerk														
Bridget D. Adley	Democrat	114	99	10	32	127	103	34	2	26	52	27		

Official Recapitulation WASHINGTON COUNTY PRIMARY ELECTION		The Democratic Election Commission will prepare three (3) Official Recapitulation Sheets containing the vote of the entire county by precinct. They will forward one copy to Delbert Hosemann, Secretary of State, 401 MISSISSIPPI ST. JACKSON MS 39201, file one copy with the State Executive Committee, file one copy with the Circuit Clerk of the County and keep the third copy for their records.											
Names of Election Precincts		Names of Election Precincts											
Votes cast in the County of Washington, Mississippi on the 2nd day of August 2011		Old American Legion	Metcalfe Municipal Building	Elks Lodge	Leland Health Department	Leland Rotary Club	Hollandale City Hall	Parlove	Grace Methodist Church	Greenville Industrial College	TOTAL		
W. Dewayne Richardson	Democrat	420	196	669	438	283	387	24	341	319	5495		
State Senate 12-District 12													
Derrick T. Simmons	Democrat	463	233	774	X	X	X	X	385	375	3451		
State Senate 22-District 22													
Mala Brooks	Democrat	0	X	X	396	238	277	15	0	0	1518		
George 'Boo' Hollowell	Democrat	0	X	X	172	149	176	10	0	0	1473		
State House Of Rep 28-District 28													
David Dallas	Democrat	X	X	220	400	163	X	X	43	X	826		
State House Of Rep 34-District 34													
Uma Whittington	Democrat	X	X	X	X	X	1	0	X	X	15		
State House Of Rep 49-District 49													
Willie L. Bailey	Democrat	X	X	60	X	X	X	X	171	363	1903		
State House Of Rep 50-District 50													
John W. Hines	Democrat	459	218	415	X	118	377	X	149	1	2382		
State House Of Rep 51-District 51													
Gary Farmer	Democrat	X	X	X	X	X	6	1	X	X	53		
Whitfield Harrington	Democrat	X	X	X	X	X	1	0	X	X	28		
Rufus E. 'Pete' Straughter	Democrat	X	X	X	X	X	5	0	X	X	39		
Washington-Chancery Clerk													
Bridget D. Adley	Democrat	82	83	130	290	178	57	4	76	63	1589		

Official Recapitulation
WASHINGTON COUNTY PRIMARY ELECTION

The Democratic Election Commission will prepare three (3) Official Recapitulation Sheets containing the vote of the entire county by precinct. They will forward one copy to Delbert Hosemann, Secretary of State, 401 MISSISSIPPI ST. JACKSON MS 39201, file one copy with the State Executive Committee, file one copy with the Circuit Clerk of the County and keep the third copy for their records.

Names of Election Precincts		St. James Episcopal Church	Covenant Presbyterian	Dwightwater Baptist Church	Glen Allan Library	Ward's Recreation Center	Buster Brown Community Center	Arcola City Hall	Potter House	Tampa Drive	GREENVILLE DAYCARE CENTER	Extension Building
Democrat	Marilyn Hansell	455	291	19	95	311	380	117	20	134	256	146
Washington-Circuit Clerk												
Democrat	Barbara Esters-Parker	406	258	17	84	261	333	97	19	120	203	111
Democrat	Catherine Maxwell Gardner	40	46	4	25	40	54	14	0	15	30	11
Democrat	Jennifer King Jackson	145	99	10	28	146	120	32	4	30	87	57
Washington-Coroner												
Democrat	Al Creath	54	44	1	6	45	47	6	1	18	47	11
Democrat	Methel Johnson	278	123	13	60	183	234	66	12	82	168	86
Democrat	Lenn Redmon	206	201	14	39	187	201	52	8	54	82	61
Democrat	Jerry Ali Shelton	41	27	3	22	25	18	20	2	9	19	21
Washington-County Attorney												
Democrat	Eric Hawkins	505	349	27	94	385	438	121	21	140	295	156
Washington-Sheriff												
Democrat	Melvin Edwards	48	62	9	12	67	39	14	0	17	16	15
Democrat	Milton Manuel Gaston, Sr	528	338	22	129	376	459	137	22	149	302	163
Washington-Tax Assessor												
Democrat	Mark K. Seard	539	372	28	99	407	469	125	21	155	293	154
Washington-Tax Collector												
Democrat	Frank 'Major' B. Bailey	26	30	5	12	19	19	8	0	5	10	4
Democrat	Eric F. Freeman	235	224	12	48	213	234	40	5	57	109	59
Democrat	Patricia A. Lee	328	155	14	71	209	251	100	18	102	198	106

Official Recapitulation WASHINGTON COUNTY PRIMARY ELECTION		The Democratic Election Commission will prepare three (3) Official Recapitulation Sheets containing the vote of the entire county by precinct. They will forward one copy to Delbert Hosemann, Secretary of State, 401 MISSISSIPPI ST, JACKSON MS 39201, file one copy with the State Executive Committee, file one copy with the Circuit Clerk of the County and keep the third copy for their records.									
Votes cast in the County of Washington, Mississippi on the 2nd day of August 2011		Names of Election Precincts									
		Old American Legion	Metcalfe Municipal Building	Elks Lodge	Ieland Health Department	Ieland Rotary Club	Hollandale City Hall	Orlove	Grace Methodist Church	Greenville Industrial College	TOTAL
Marilyn Hansell	Democrat	412	186	662	268	200	422	21	315	338	5048
Washington-Circuit Clerk											
Barbara Esters-Parker	Democrat	323	218	593	467	318	370	17	300	287	4802
Catherine Maxwell Gardner	Democrat	50	13	54	32	16	39	2	22	24	531
Jennifer King Jackson	Democrat	132	40	172	64	49	66	6	88	96	1471
Washington-Coroner											
Al Creath	Democrat	58	9	51	34	18	13	2	35	26	526
Jwethel Johnson	Democrat	225	172	447	336	206	280	15	188	226	3400
Leon Redmon	Democrat	177	50	297	148	129	152	8	155	140	2361
Derry All Shelton	Democrat	42	30	28	34	16	33	0	27	18	435
Washington-County Attorney											
Eric Hawkins	Democrat	437	203	716	456	299	408	22	362	344	5778
Washington-Sheriff											
Melvin Edwards	Democrat	45	13	49	69	56	30	5	31	29	626
Milton Manuel Gaston, Sr	Democrat	455	256	768	487	323	453	20	372	382	6141
Washington-Tax Assessor											
Mark K. Seard	Democrat	475	223	780	487	325	424	23	375	377	6151
Washington-Tax Collector											
Fraak Major' B. Bailey	Democrat	18	12	14	27	15	49	2	18	17	310
Eric F. Freeman	Democrat	181	65	283	136	100	108	4	165	138	2416
Patricia A. Lee	Democrat	296	189	526	404	277	327	19	226	258	4074

Official Recapitulation WASHINGTON COUNTY PRIMARY ELECTION		The Democratic Election Commission will prepare three (3) Official Recapitulation Sheets containing the vote of the entire county by precinct. They will forward one copy to Delbert Hosemann, Secretary of State, 401 MISSISSIPPI ST. JACKSON MS 39201, file one copy with the State Executive Committee, file one copy with the Circuit Clerk of the County and keep the third copy for their records.										
Votes cast in the County of Washington, Mississippi on the 2nd day of August 2011		Names of Election Precincts										
		St. James Episcopal Church	Covenant Presbyterian	Swiftwater Baptist Church	Glen Allan Library	Ward's Recreation Center	Buster Brown Community Center	Arcola City Hall	Potter House	Tampa Drive	GREENVILLE DAYCARE CENTER	Extension Building
Justice Court Judge JC-1-Justice Court Judge JC01	Democrat	16	X	25	63	X	X	X	X	148	298	154
Justice Court Judge JC-2-Justice Court Judge JC02												
Kimberly Jones Merchant	Democrat	204	345	X	X	X	436	X	21	X	0	X
Justice Court Judge JC-3-Justice Court Judge JC03												
Cedric C. Bush	Democrat	272	X	1	28	345	1	98	X	X	X	X
Laur Reace Moore	Democrat	56	X	0	10	80	1	42	X	X	X	X
Constable JC-1-Constable JC01												
Mathaniel Watkins, Jr	Democrat	16	X	24	64	X	X	X	X	143	284	153
Constable JC-2-Constable JC02												
Robert R.C. Anderson	Democrat	207	335	X	X	X	442	X	21	X	0	X
Constable JC-3-Constable JC03												
Tony Pratt	Democrat	268	X	1	35	374	2	134	X	X	X	X
Supervisor District 001-Supervisor District 1												
Jacqueline Thompson	Democrat	471	315	26	93	X	X	X	X	X	X	X
Supervisor District 002-Supervisor District 2												
Willie Griffin	Democrat	X	X	X	X	363	447	117	22	X	X	X
Supervisor District 003-Supervisor District 3												
Shirley Sturdevant Allen	Democrat	X	X	X	X	X	X	X	X	38	93	55

Official Recapitulation WASHINGTON COUNTY PRIMARY ELECTION		The Democratic Election Commission will prepare three (3) Official Recapitulation Sheets containing the vote of the entire county by precinct. They will forward one copy to Delbert Hosemann, Secretary of State, 401 MISSISSIPPI ST. JACKSON MS 39201, file one copy with the State Executive Committee, file one copy with the Circuit Clerk of the County and keep the third copy for their records.									
Votes cast in the County of Washington, Mississippi on the 2nd day of August 2011		Names of Election Precincts									
		Old American Legion	Metcaife Municipal Building	Elks Lodge	Leland Health Department	Leland Rotary Club	Hollandale City Hall	Carlove	Grace Methodist Church	Greenville Industrial College	TOTAL
Justice Court Judge JC-1-Justice Court Judge JC01											
Laverne Holmes Carter	Democrat	190	X	X	X	X	X	X	X	177	1071
Justice Court Judge JC-2-Justice Court Judge JC02											
Kimberly Jones Merchant	Democrat	243	202	410	22	145	X	X	123	174	2325
Justice Court Judge JC-3-Justice Court Judge JC03											
Cedric C. Bush	Democrat	X	X	271	448	166	364	19	197	X	2210
Laur Reace Moore	Democrat	X	X	48	74	33	96	6	53	X	499
Constable JC-1-Constable JC01											
Nathaniel Watkins, Jr	Democrat	187	X	X	X	X	X	X	X	184	1055
Constable JC-2-Constable JC02											
Robert 'R.C.' Anderson	Democrat	243	196	450	21	136	X	X	131	177	2359
Constable JC-3-Constable JC03											
Tony Pratt	Democrat	X	X	274	475	169	409	22	219	X	2382
Supervisor District 001-Supervisor District 1											
Jacqueline Thompson	Democrat	X	X	X	X	X	X	X	X	X	905
Supervisor District 002-Supervisor District 2											
Willie Griffin	Democrat	X	X	X	X	X	X	X	X	X	949
Supervisor District 003-Supervisor District 3											
Shirley Sturdevant Allen	Democrat	64	128	X	X	X	X	X	X	X	378

Official Recapitulation WASHINGTON COUNTY PRIMARY ELECTION		The Democratic Election Commission will prepare three (3) Official Recapitulation Sheets containing the vote of the entire county by precinct. They will forward one copy to Delbert Rosemann, Secretary of State, 401 MISSISSIPPI ST. JACKSON MS 39201, file one copy with the State Executive Committee, file one copy with the Circuit Clerk of the County and keep the third copy for their records.										
Votes cast in the County of Washington, Mississippi on the 2nd day of August 2011		Names of Election Precincts										
		St. James Episcopal Church	Covenant Presbyterian	Swiftwater Baptist Church	Glen Allan Library	Ward's Recreation Center	Buster Brown Community Center	Arcola City Hall	Potter House	Tampa Drive	GREENVILLE DAYCARE CENTER	Extension Building
Bob Boyd	Democrat	X	X	X	X	X	X	X	X	X	37	23
James E. Gillon	Democrat	X	X	X	X	X	X	X	X	X	82	40
Carl L. Harden	Democrat	X	X	X	X	X	X	X	X	X	51	19
Troy Wesley	Democrat	X	X	X	X	X	X	X	X	X	48	28
Supervisor District 004-Supervisor District 4												
S. B. Buck	Democrat	X	X	X	X	X	X	X	X	X	X	X
Supervisor District 005-Supervisor District 5												
Willie J. Burnside	Democrat	X	X	X	X	X	X	X	X	X	X	X
Ernest Holmes	Democrat	X	X	X	X	X	X	X	X	X	X	X

Official Recapitulation WASHINGTON COUNTY PRIMARY ELECTION		The Democratic Election Commission will prepare three (3) Official Recapitulation Sheets containing the vote of the entire county by precinct. They will forward one copy to Delbert Hosemann, Secretary of State, 401 MISSISSIPPI ST. JACKSON MS 39201, file one copy with the State Executive Committee, file one copy with the Circuit Clerk of the County and keep the third copy for their records.										
Votes cast in the County of Washington, Mississippi on the 2nd day of August 2011		Names of Election Precincts										
		Old American Legion	Metcalfe Municipal Building	Elks Lodge	Leland Health Department	Leland Rotary Club	Hollandale City Hall	Darlove	Grace Methodist Church	Greenville Industrial College	TOTAL	
Bob Boyd	Democrat	122	14	X	X	X	X	X	X	X	227	
James E. Gillon	Democrat	138	6	X	X	X	X	X	X	X	300	
Carl L. Harden	Democrat	50	6	X	X	X	X	X	X	X	148	
Troy Wesley	Democrat	136	114	X	X	X	X	X	X	X	364	
Supervisor District 004-Supervisor District 4												
S. B. Buck	Democrat	X	X	720	448	289	X	X	X	X	1457	
Supervisor District 005-Supervisor District 5												
Willie J. Burnside	Democrat	X	X	X	X	X	215	14	97	80	406	
Ernest Holmes	Democrat	X	X	X	X	X	270	11	295	317	893	