



JUDICIAL



JUDICIAL

Article 6 of the Mississippi Constitution of 1890 vests the judicial power of the State of Mississippi in a Supreme Court and lower courts as provided.

Mississippi Court System	165
Judicial Route of Appeal	168
Mississippi Supreme Court Districts Map	169
Mississippi Supreme Court Justices.	170
Mississippi Court of Appeals Districts Map.	177
Mississippi Court of Appeals Judges	178
Mississippi Appellate Courts Contact Information	186
Senior Status Judges	188
Circuit and Chancery Court Districts by County	190
Circuit Court District Map.	191
Circuit Court Judges	192
Chancery Court District Map.	199
Chancery Court Judges	200
District Attorneys	205
County Court Judges.	206
Justice Court Judges.	209
Municipal Court Judges	215
Drug Courts	220
Youth Courts	220
Judicial Resources	220

MISSISSIPPI COURT SYSTEM

www.courts.ms.gov

Mississippi has a two-tier appellate court system that reviews decisions of law and fact made by the trial courts. The state's trial court system consists of two general jurisdiction courts (circuit and chancery) and three limited jurisdiction courts (county, justice, and municipal).

SUPREME COURT

The Mississippi Supreme Court is the court of last resort among state courts. Decisions of the Chancery, Circuit and County Courts and of the Court of Appeals may be appealed to the Supreme Court. Appeals which go directly to the Supreme Court include annexations, bond issues, constitutionality challenges, death penalty cases, disciplinary matters involving attorneys and judges, election contests, certified questions from federal court, utility rates, cases of first impression, and issues of broad public interest.

Nine Supreme Court justices are elected from three districts. Non-partisan elections are staggered so that not all positions are up for election at once. Supreme Court justices serve eight-year terms.

Each Supreme Court justice participates in deciding appeals from the entire state. Decisions are by a majority vote of the court. The nine justices may sit in en banc (all members participating) or in three-judge panels.

SUPREME COURT DISTRICTS:

1 – *Counties:* Bolivar, Claiborne, Copiah, Hinds, Holmes, Humphreys, Issaquena, Jefferson, Kemper, Lauderdale, Leake, Madison, Neshoba, Newton, Noxubee, Rankin, Scott, Sharkey, Sunflower, Warren, Washington, Yazoo; 2 – *Counties:* Adams, Amite, Clarke, Covington, Forrest, Franklin, George, Greene, Hancock, Harrison, Jackson, Jasper, Jefferson Davis, Jones, Lamar, Lawrence, Lincoln, Marion, Pearl River, Perry, Pike, Simpson, Smith, Stone, Walthall, Wayne, Wilkinson; and 3 – *Counties:* Alcorn, Attala, Benton, Calhoun, Carroll, Chickasaw, Choctaw, Clay, Coahoma, Desoto, Grenada, Itawamba, Lafayette, Lee, Leflore, Lowndes, Marshall, Monroe, Montgomery, Oktibbeha, Panola, Pontotoc, Prentiss, Quitman, Tallahatchie, Tate, Tippah, Tishomingo, Tunica, Union, Webster, Winston, Yalobusha.

QUALIFICATIONS: A qualified elector for and from the Supreme Court District in which election is sought (residency), a practicing attorney, at least 30 years of age, and a citizen of the state for five (5) years preceding the day of election.

Fee: \$200 made payable to the State Board of Election Commissioners, delivered to the Secretary of State's Office.

TERMS OF COURT: A term of the Supreme Court shall be held twice each year in the city of Jackson, to be styled the Supreme Court; and the terms shall commence the second Monday of September and the first Monday of March, and the Court shall be kept open for the discharge of business for at least nine months of every year if the business therein should require.

COURT OF APPEALS

The Court of Appeals hears cases assigned by the Supreme Court. The Court of Appeals is an error correction court. It hears and decides appeals on issues in which the law is already settled, but the facts are in dispute. The Supreme Court may review Court of Appeals decisions. If the Supreme Court declines review, the decision of the Court of Appeals stands.

The Mississippi Legislature created the Court of Appeals in 1994 to speed appeals and relieve a backlog of cases before the Supreme Court. The Court of Appeals began hearing cases in 1995.

Ten Court of Appeals judges are elected from five districts. Non-partisan elections are staggered so that not all positions are up for election at one time. Court of Appeals judges serve eight-year terms. Court of Appeals judges hear cases from all over the state.

QUALIFICATIONS: A practicing attorney, at least 30 years of age, and a citizen of the state for five (5) years preceding the day of election. Fee: \$200 made payable to the State Board of Election Commissioners, delivered to the Secretary of State's Office.

TERMS OF COURT: The Court of Appeals meets continuously throughout the year and hears arguments every month except July. By law, the Court is located in the City of Jackson as close as convenient to the State Law Library and the Supreme Court.

CIRCUIT COURTS

Circuit Courts hear felony criminal prosecutions and civil lawsuits. Mississippi's 22 circuit courts have original jurisdiction over all civil and criminal matters not vested exclusively in another court. Circuit Courts also hear appeals from County, Justice, and Municipal courts and from administrative boards and commissions such as the Mississippi Department of Employment Security.

There are 22 Circuit Court districts and 57 Circuit Court judges. Circuit Court judges are selected in non-partisan elections to serve four-year terms. Most circuit court trials are heard with a 12-member jury and usually one or two alternate jurors. A judge may preside without a jury if the dispute is a question of law rather than fact. Circuit judges have the power to issue extraordinary writs.

QUALIFICATIONS: A practicing attorney for five (5) years, at least 26 years of age, and a citizen of the state for five (5) years.

Fee: \$100 made payable to the State Board of Election Commissioners, delivered to the Secretary of State's Office.

TERMS OF COURT: Each year, the circuit court judges issue orders establishing the commencement and continuation of terms of court no later than October 1. If no order is issued, then the court term remain unchanged from the previous year. This information is posted at each courthouse and is published annually by the Secretary of State in the Judiciary Directory and Court Calendar.

CHANCERY COURTS

Chancery Courts have jurisdiction over disputes in matters involving equity; domestic matters including adoptions, custody disputes and divorces; guardianships; sanity hearings; wills; and challenges to constitutionality of state laws. Land records are filed in Chancery

Court. The Chancery Courts' jurisdiction over equity matters involving less than \$200,000 is concurrent with county courts.

Chancery Courts have jurisdiction over juvenile matters in counties which have no County Court. The chancellor may appoint a lawyer in private practice to sit as a youth court referee to hear juvenile matters such as delinquency, abuse, and neglect.

Trials are typically heard by a chancellor without a jury, although state law allows parties to request a jury in Chancery Court.

There are 20 Chancery Court districts and 52 Chancery Court judges. Chancery Court judges are selected in non-partisan elections to serve four-year terms.

QUALIFICATIONS: A practicing attorney for five (5) years, at least 26 years of age, and a citizen of the state for five (5) years.

Fee: \$100 made payable to the State Board of Election Commissioners, delivered to the Secretary of State's Office.

TERMS OF COURT: Each year, chancellors issue orders establishing the commencement and continuation of terms of court no later than October 1. If no order is issued, then the court term remain unchanged from the previous year. This information is posted at each courthouse and is published by the Secretary of State in the Judiciary Directory and Court Calendar.

COUNTY COURTS

County Courts have exclusive jurisdiction over eminent domain proceedings and juvenile matters. In counties which have a County Court, a County Court judge also serves as the Youth Court judge. County Courts share jurisdiction with Circuit and Chancery Courts in some civil matters. The jurisdictional limit of County Courts is up to \$200,000. County Courts may handle non-capital felony cases transferred from Circuit Court. County Court judges may issue search warrants, set bond, and preside over preliminary hearings. County Courts have concurrent jurisdiction with Justice Courts in all matters, civil and criminal.

Mississippi has 21 County Courts and 30 County Court judges. Counties which have a County Court include Adams, Bolivar, Coahoma,

DeSoto, Forrest, Harrison, Hinds, Jackson, Jones, Lamar, Lauderdale, Lee, Leflore, Lowndes, Madison, Pearl River, Pike, Rankin, Warren, Washington, and Yazoo.

County Court judges serve four-year terms. Elections are non-partisan.

QUALIFICATIONS: A qualified elector for and from the county court district (residency), at least 26 years old, a practicing attorney for five (5) years, and a citizen of the state for five (5) years preceding the election.

Fee: \$15 made payable to county Circuit Clerk.

TERMS OF COURT: County court usually begins the second Monday of each month unless a special order is entered by the court to extend the term, or, in the case of some counties with two courthouses, the law provides special terms of court for each courthouse.

JUSTICE COURTS

Justice Courts have jurisdiction over small claims civil cases involving amounts of \$3,500 or less, misdemeanor criminal cases, and any traffic offense that occurs outside a municipality. Justice Court judges may conduct bond hearings and preliminary hearings in felony criminal cases and may issue search warrants.

There are 82 Justice Courts with 197 judges. Each county is divided into justice court districts, the number determined by population. Justice Court judges are the only Mississippi judges elected in partisan races. They serve four-year terms.

QUALIFICATIONS: A qualified elector, a resident of the county for two (2) years preceding the day of election, a high school graduate, and complete a course of training required by law within six (6) months of the beginning of the term of office.

Party Candidates: \$100 made payable to the appropriate county executive committee via Circuit Clerk.

Independent candidates: \$100 paid to the county via the Circuit Clerk and petition filed with the Circuit Clerk containing signatures of not less than 15 qualified electors of the district.

TERMS OF COURT: Justice court judges hold regular terms of their courts, at such times as they may appoint, but no more than two and not less than one term in every month.

DRUG COURTS

Drug Courts are special courts which address crimes committed by persons addicted to drugs or alcohol. Drug courts seek to rehabilitate drug-using offenders through drug treatment and intense supervision with drug testing and frequent court appearances. Drug courts offer the incentive of a chance to remain out of jail and be employed, and the sanction of a jail sentence if participants fail to remain drug-free and in compliance with all program requirements.

YOUTH COURTS

The Youth Courts deal with matters involving abuse and neglect of juveniles, as well as offenses committed by juveniles. Young people who have not reached the age of 18 may be subject to the Youth Court, although there are some exceptions. Some offenses which would be treated as crimes if committed by adults are known as delinquent acts when they involve juveniles.

In the 21 counties which have a County Court, those judges also serve as Youth Court Judges. In counties which do not have a County Court, the Chancery Judge may hear Youth Court matters, or the Chancery Judge may appoint a lawyer to act in a judicial capacity as Youth Court Referee. The city of Pearl also has its own municipal Youth Court.

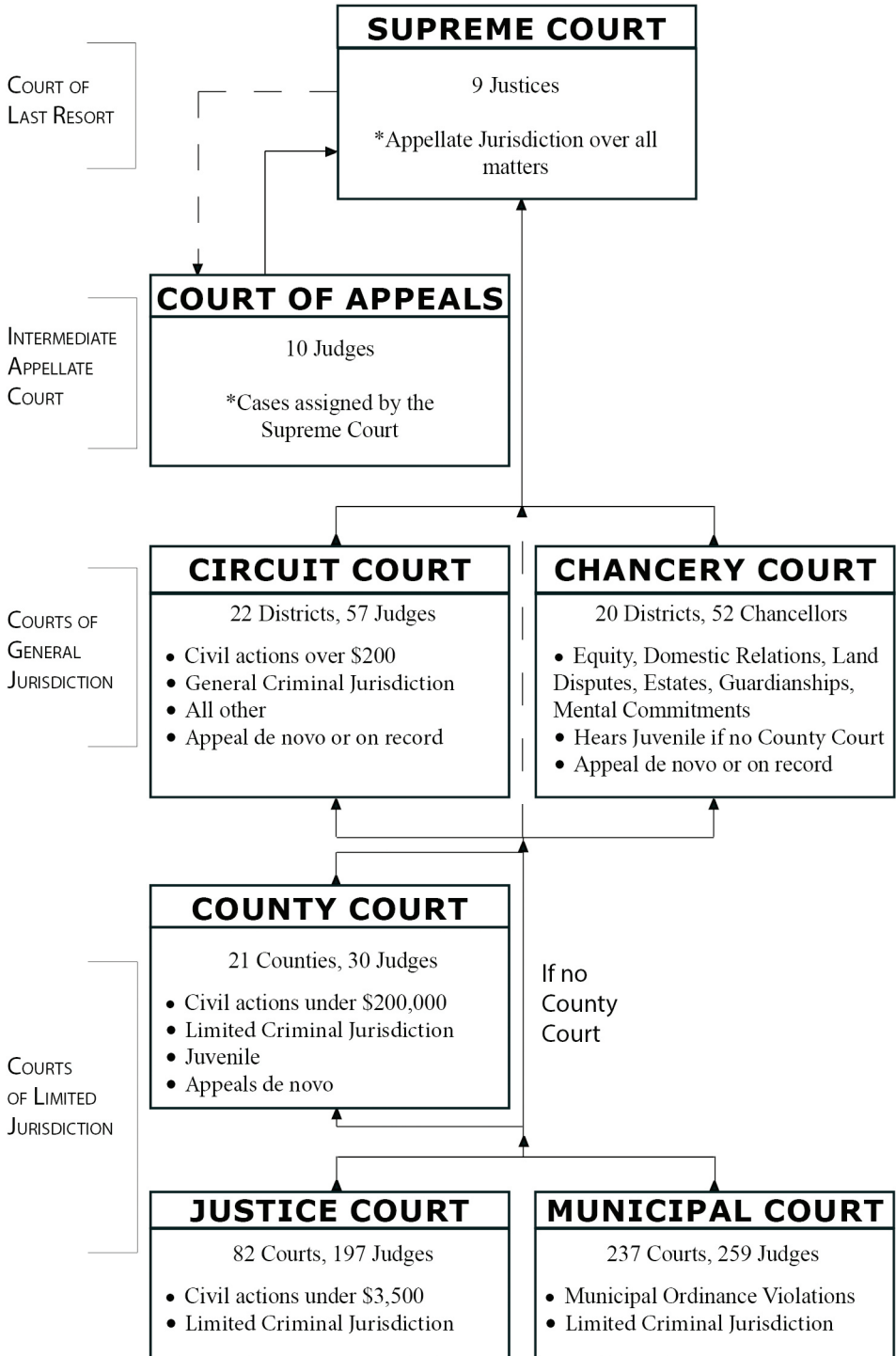
MUNICIPAL COURTS

Municipal courts have exclusive jurisdiction over city ordinance violations. Under certain conditions, some may also exercise jurisdiction in cases involving juveniles. Municipal court judges are appointed by municipal governing bodies. Miss. Code Ann. § 21-23-1 (1972).

QUALIFICATIONS: A qualified elector of the county in which the municipality is located and an attorney at law.

Municipal judges may hold court every day except Sundays and legal holidays if the business of the municipality requires.

MISSISSIPPI JUDICIAL ROUTE OF APPEAL



MISSISSIPPI SUPREME COURT



MISSISSIPPI SUPREME COURT JUSTICES

(601) 359-3697/f(601) 359-2443

William L. Waller Jr., Chief Justice

Judicial Assistant: Susan Ingram
(601) 359-2139

Jess H. Dickinson, Presiding Justice

jdickinson@courts.ms.gov
Judicial Assistant: Cindy Ward
(601) 359-2184

Michael K. Randolph, Presiding Justice

jrandolph@courts.ms.gov
Judicial Assistant: Angela Cossar
(601) 359-2100

James W. Kitchens, Associate Justice

Judicial Assistant: Cindy Henderson
(601) 359-2180

Leslie D. King, Associate Justice

jking@courts.ms.gov
Judicial Assistant: Mabel Davenport
(601) 359-2096

Josiah D. Coleman, Associate Justice

Judicial Assistant: Shinyera Johnson
(601) 359-2102

James D. Maxwell II, Associate Justice

jmaxwell@courts.ms.gov
Judicial Assistant: Jessica Hartzog
(601) 359-2107

Dawn H. Beam, Associate Justice

Judicial Assistant: Julia Soutullo
(601) 359-2093

Robert P. Chamberlin, Associate Justice

Judicial Assistant: Mary Ewing
(601) 359-2099



Chief Justice
WILLIAM L.
WALLER JR.
District 1 (Central),
Place 1

Chief Justice William L. (Bill) Waller Jr., is a native and current resident of Jackson. After graduating from Murrah High School, he received his bachelor's degree from Mississippi State University in 1974 and his law degree from the University of Mississippi in 1977. He practiced law with the firm of Waller and Waller in Jackson for more than twenty years. He served as a Municipal Judge for the City of Jackson from 1995 to 1996.

Waller was elected to the Mississippi Supreme Court in November 1996, and was re-elected in November 2004 and in November 2012. He served as a Presiding Justice from January 2004 until December 2008. He became Chief Justice in January 2009.

Waller has worked to bring various reforms to the legal system. He supported the adoption of mediation rules for civil litigation; served as Chairman of the Mississippi Public Defender Task Force from 2000 to 2005; and chaired the Supreme Court Rules Committee from 2001 to 2008. Waller was also the principal architect behind legislation that created the Office of Capital Post Conviction Counsel, the Office of Indigent Appeals, and the Comprehensive Electronic Court Systems Fund. In 2012, he led efforts that resulted in the passage of judicial compensation reform legislation. Waller has also promoted statewide expansion of Drug Courts, which focus on rehabilitation and save millions of tax dollars. He has written articles for the Mississippi College Law Review, the Mississippi College School of Law's Amicus publication, and The Mississippi Lawyer magazine. He speaks regularly at civic clubs, public events, and continuing education seminars.

Waller has been recognized for his service and leadership. He received the Judicial Innovation Award for 2003-2004 from the Hinds County Bar Association and the Jackson Young Lawyers Association; the Chief Justice Award in 2005 for his work as chairman of a special study committee

to develop a statewide electronic filing and docket management system; the Mississippi State University Pre-Law Society's Distinguished Jurist award in 2009; the Judicial Excellence Award for 2011-2012 from the Capital Area Bar Association and the Jackson Young Lawyers Association; and the Mississippi Bar Association's Judicial Excellence Award for 2013. In 2012, Waller was inducted as a Fellow of the Mississippi Bar Foundation and was the recipient of an Honorary Doctor of Laws Degree by Mississippi College. Waller serves as an adjunct faculty member at the Mississippi College School of Law and the University of Mississippi School of Law.

Waller's service extends beyond the Court. He has more than 30 years commissioned service in the Mississippi Army National Guard and the United States Army Reserve and is presently assigned to the Retired Reserve. Waller is a graduate of the U.S. Army War College and a recipient of the Legion of Merit. He attained the rank of Brigadier General while serving as the Commander of the 66th Troop Command, Mississippi Army National Guard. He is also currently a member of the Stennis Institute Advisory Board at Mississippi State University. Waller and his two sons are Eagle Scouts.

Waller and his wife, Charlotte, are members of First Baptist Church Jackson. They have three adult children.



Presiding Justice
JESS H. DICKINSON
District 2 (Southern),
Place 1

Justice Jess H. Dickinson was born in Charleston, Mississippi, in 1947. After graduation from East Tallahatchie High School in 1965, he attended Mississippi State University, receiving his Bachelor of Science degree in 1978. He received his Juris Doctor cum laude from the University of Mississippi School of Law in 1982, where he served on the editorial board of the Mississippi Law Journal.

After practicing law for one year in Jackson, and 20 years in Gulfport, Justice Dickinson served as a Forrest County Circuit Court Judge, by

special appointment of the Mississippi Supreme Court. His service on the Supreme Court began in January 2004. His first year on the Court, Justice Dickinson was awarded the Chief Justice Award for his work in advancing the administration of justice. He again received the Chief Justice Award in 2010 for his work on improving access to justice for the poor in Mississippi. In 2009, the Mississippi Volunteer Lawyers Project awarded Justice Dickinson its Pro Bono Pioneer Award.

Justice Dickinson has served on the adjunct faculty of William Carey College and Mississippi College School of Law where, in 2009, he was elected by the law students as Adjunct Professor of the Year. He served two terms on both the Ethics Committee and the Professionalism Committee of the Mississippi Bar. He also serves as the Supreme Court's liaison to organizations providing legal services to the poor, and is a charter member of the Mississippi Access to Justice Commission.



**Presiding Justice
MICHAEL K.
RANDOLPH**

District 2 (Southern), Place 3

Justice Michael K. Randolph was appointed to the Mississippi Supreme Court by Gov. Haley Barbour on April 23, 2004. Justice Randolph was appointed to serve the unexpired term of former Chief Justice Edwin L. Pittman. Justice Randolph was first elected in November 2004, and re-elected in November 2012, for another eight-year term. He became a Presiding Justice of the Supreme Court on January 1, 2013.

In 2007, he served as Chairman of the Legislatively-created Task Force to Study the Justice Court System. Justice Randolph served as co-chairman of the Task Force for Youth Court Rules of Procedure in 2008. He serves on numerous internal committees of the Court.

Justice Randolph was born in 1946.

He was decorated for heroism in Vietnam. He served as an air traffic controller with the U.S. Army 1st Infantry Division, known as the Big Red One. He was honorably discharged in 1967. During law school, he received an appointment as a Reserve officer in the United States Navy, Judge

Advocate General's Corps. He is a graduate of the Naval Justice School in Newport, Rhode Island. He was honorably discharged in 1975.

He graduated from Rollins College in Winter Park, Fla., with a B.S. degree in business administration in 1972. He earned his Juris Doctorate from the University of Mississippi School of Law in 1974, where he served as president of the Law School Student Body.

Justice Randolph began practicing law in 1975, first in Biloxi with the firm of Ross, King and Randolph. Subsequently he practiced with the firm of Bryan, Nelson, Allen and Schroeder in Pascagoula, Biloxi and Gulfport. He opened a Hattiesburg office for Bryan, Nelson, Allen and Schroeder in 1976, where he later formed the firm of Bryan Nelson Randolph, P.A., serving as President and CEO until his appointment to the Supreme Court.

Justice Randolph holds the highest ranking accorded by Martindale-Hubbell and is listed in their Bar Register of Pre-Eminent Lawyers, as well as A.M. Best's Directory of Recommended Insurance Attorneys and The Insurance Bar.

Justice Randolph's legal experience includes extensive state and federal court practice. He primarily devoted his practice to insurance defense for two decades, but in the last decade before appointment to the Supreme Court, his practice was divided equally representing defendants and plaintiffs. He served as regional trial counsel for numerous corporate defendants, as well as national trial counsel for various manufacturing defendants. He has defended physicians, hospitals, nursing homes and home health agencies. He represented numerous insurers in arson and insurance fraud cases. He also had extensive experience in general maritime law and Jones Act cases, primarily representing injured seamen.

Justice Randolph was appointed by President Ronald Reagan to serve on the National Coal Council. He has served on the boards of directors of William Carey College, the Boys and Girls Club of Hattiesburg, the Hattiesburg Girls Shelter, and advisory board of the Hattiesburg Salvation Army. He is a former president of the Hattiesburg Civic Association. He was a member of the Hattiesburg Area Development Partnership.

He has generously supported Christian Services Inc., United Way, the Salvation Army,

Hattiesburg Boys and Girls Club, Mississippi Children's Home Society, Baptist Children's Village, Home of Grace, the University of Mississippi, the University of Southern Mississippi and William Carey University.

He is a member of the American Bar Association, the Bar Association of the Fifth Federal Circuit, the Mississippi Bar Association, and the South Central Mississippi Bar Association, which he formerly served as President.

Justice Randolph is a member of Temple Baptist Church in Hattiesburg, where he has served as a deacon and Sunday School teacher. He has also served on the Finance Committee and the By-Laws Committee.

Justice Randolph is married to Kathy Webb Randolph, formerly of Ocean Springs. He has three children and four grandchildren.



Associate Justice
JAMES W. KITCHENS
*District 1 (Central),
Place 3*

Justice James W. Kitchens is a lifelong resident of Crystal Springs, Copiah County, Mississippi. Born on April 29, 1943, he graduated from Crystal Springs High School in 1961, then earned a Bachelor of Science degree from the University of Southern Mississippi in 1964, and a Juris Doctorate from the University of Mississippi School of Law in 1967.

Justice Kitchens is licensed to practice law in Mississippi and in the District of Columbia, and has been admitted to practice before the United States District Courts for the Northern and Southern Districts of Mississippi, as well as the United States 5th Circuit Court of Appeals and the United States Supreme Court.

He was elected district attorney for the Mississippi counties of Copiah, Lincoln, Pike, and Walthall in 1971, 1975, and 1979. He served for nine years before returning to the private practice of law. He did not seek public office again until 2008, when he was elected to an eight year term on the Mississippi Supreme Court (Central District, Place 3), commencing in January of

2009. In 2016, he was elected to a second eight-year term.

Justice Kitchens has been married to Mary Tooke Kitchens, a retired public school teacher, since 1968. They are the parents of five adult children: Suzannah Kitchens Finch, Matthew W. Kitchens, Daniel W. Kitchens, Rebecca Kitchens Thornton, and John W. Kitchens. Justice and Mrs. Kitchens have 12 grandchildren.



Associate Justice
LESLIE D. KING
*District 1 (Central),
Place 2*

Justice Leslie D. King is a native of Greenville, where he began practicing law in 1973. He graduated from the University of Mississippi in 1970, and from the Texas Southern University School of Law in 1973.

Judge King was elected to the Court of Appeals in 1994 and began hearing cases in January 1995. He served as Chief Judge from April 30, 2004, through March 1, 2011. Gov. Haley Barbour appointed him to a vacancy on the Mississippi Supreme Court. He took the oath of office to serve on the Supreme Court on March 1, 2011.

Justice King served in the Mississippi House of Representatives from 1980 through 1994. During his tenure, he was named vice-chairman of the Ways and Means Committee (1988-1991) and vice-chairman of the Conservation and Water Resources Committee (since 1992). Other committees on which he served include: Judiciary, Insurance, Environmental Protection Council, Housing Finance Oversight, and Universities and Colleges. He was chairman of the Mississippi Black Legislative Caucus in 1988. He previously served as Youth Court Counselor for Washington County, Public Defender, Youth Court Prosecutor, and Municipal Court Judge for the Town of Metcalfe.

Justice King and his wife, the former Patricia Smith of Greenville, have two daughters and a granddaughter. They attend the St. Matthew African Methodist Episcopal Church in Greenville.



Associate Justice
JOSIAH D. COLEMAN
District 3 (Northern),
Place 3

Justice Josiah Dennis Coleman was elected to the Mississippi Supreme Court on Nov. 6, 2012, and began his term on Jan. 7, 2013.

He previously practiced law for 12 years, first in Tupelo, then in Oxford. His practice concentrated on defense litigation and appellate advocacy in the areas of insurance, product liability, and professional malpractice. He is admitted to practice before all Mississippi state and federal courts, and before the Fifth U.S. Circuit Court of Appeals.

Justice Coleman is the second member of his family to serve on the Mississippi Supreme Court. Both his grandfather and his father were appellate court judges. He is the grandson of the late J.P. Coleman, who served as Mississippi Governor and on the Fifth U.S. Circuit Court of Appeals. J.P. Coleman also served briefly as a justice of the Mississippi Supreme Court, resigning to accept appointment as state attorney general. Thomas Coleman, the younger Justice Coleman's father, was one of the original members of the Mississippi Court of Appeals when the intermediate appellate court began in 1995.

Justice Coleman grew up in Choctaw County, near Ackerman, and graduated valedictorian from Ackerman High School. He graduated cum laude from the University of Mississippi with a Bachelor of Arts degree in history and philosophy. He earned his law degree from the University of Mississippi School of Law, where he served as treasurer of the Moot Court Board and the Criminal Law Society.

He bagged groceries at the Ackerman Piggly Wiggly in high school, and worked as a dishwasher, camp counselor, and life guard while pursuing his undergraduate degree. He worked as a policy research intern in the office of the Secretary of State before starting law school. He served as a summer law clerk at a Tupelo firm.

After earning his law degree, he served for almost two years as a law clerk for U.S. Magistrate Judge S. Allan Alexander in Oxford.

He served as a volunteer firefighter on the Toccopola Volunteer Fire Department while he and his family lived in Pontotoc County. He is a former member of the board of deacons at College Hill Presbyterian Church in Oxford, and a member of the board of directors of the non profit organization The International Guest House in Oxford.

He and his wife, Ashleigh Burke Coleman, have three children. They live in Fentress in Choctaw County on a farm that has been worked by seven generations of the Coleman family.



Associate Justice
JAMES D. MAXWELL II
District 3 (Northern),
Place 2

Justice James D. Maxwell II of Oxford was appointed by Governor Phil Bryant to the Mississippi Supreme Court on January 1, 2016. He previously served as a judge on the Mississippi Court of Appeals, having been initially appointed by Governor Haley Barbour on February 2, 2009, then elected in 2010 and re-elected in 2014.

Justice Maxwell earned his undergraduate degree and juris doctorate from the University of Mississippi. He practiced civil law in Jackson before returning to Oxford to serve as Assistant United States Attorney for the Northern District of Mississippi.

As a federal prosecutor, he represented the United States Department of Justice in prosecutions and jury trials of public corruption and white collar fraud cases, as well as money laundering, drug trafficking, immigration, and gang-related crimes. He also handled appeals before the United States Court of Appeals for the Fifth Circuit. He served as Corporate Fraud Coordinator and participated on the Organized Crime Drug Enforcement Task Force. He received various commendations from the Drug Enforcement Administration and the Bureau of

Alcohol, Tobacco, Firearms and Explosives.

Justice Maxwell has also been elected to a variety of legal positions. He is a past president of the Young Lawyers Division of the Mississippi Bar Association, the Lafayette County Bar Association, and Tri-County Young Lawyers. He has also served on the Board of Bar Commissioners, the Mississippi Bar Foundation, the Diversity in the Law Committee, and the Board of Directors of the Mississippi Prosecutors Association. He is a graduate of Mississippi Economic Council's Leadership Mississippi program and in 2007 was named "Top 40 Under 40" by the Mississippi Business Journal.

Justice Maxwell frequently lectures on appellate and trial advocacy, legal writing, and Mississippi's judicial system. He and his wife Mindy have two children, Trip and Mae Covington. The Maxwells are active members of First Baptist Church, Oxford.



**Associate Justice
DAWN H. BEAM**
*District 2 (Southern),
Place 2*

Justice Dawn H. Beam joined the Mississippi Supreme Court on February 16, 2016. Gov. Phil Bryant appointed her to fill the unexpired term of former Justice Randy Pierce. She is the fourth woman to serve on the state's highest court, and the first woman appointed from the Southern District.

Justice Beam, the daughter of a minister, was born in Marks in the Mississippi Delta and as a child lived in numerous communities across the state. She graduated from Caldwell High School in Columbus, Mississippi. She earned a Bachelor of Arts degree in business from the University of Mississippi, and a law degree from the University of Mississippi School of Law. She was admitted to the Mississippi Bar in 1989.

She has spent most of her legal career in the Pine Belt area. In her early career, she worked extensively in child support enforcement. She served for three years as county prosecutor for

Lamar County. She was elected to and served for five years as a chancellor of the Tenth Chancery District, which includes Forrest, Lamar, Marion, Pearl River, and Perry counties. Her work as a chancellor and as a county prosecutor included protection of abused and neglected children.

After her appointment to the Supreme Court, she continued work for the protection of children as co-chair of the Commission on Children's Justice and ReNewMS. She spearheaded efforts to organize Rescue 100 programs to train more foster parents.

She makes her home in Sumrall. She is a member of Sumrall United Methodist Church in Lamar County. She is married to Dr. Stephen Beam. They have five children. Justice Beam and her husband are very active in their community as founding members of PineBelt360. The non-profit's mission is to connect citizens across racial, denominational, and economic lines to address education, medical, and other challenges in the Pine Belt area.



**Associate Justice
ROBERT P.
CHAMBERLIN**
District 3 (Northern), Place 1

Justice Robert P. Chamberlin of Hernando joined the Mississippi Supreme Court on Jan. 3, 2017. Justice Chamberlin was elected in a runoff election on Nov. 29, 2016, to an open seat on the Supreme Court.

Justice Chamberlin served for 12 years as a circuit judge of the 17th Circuit District. Then Gov. Haley Barbour appointed him to the 17th Circuit bench on Nov. 24, 2004. The district includes DeSoto, Panola, Tallahatchie, Tate, and Yalobusha counties. In 2006 he co founded the 17th Circuit Drug Court with then-Circuit Judge Ann Lamar. He served as chairman and vice chairman of the Conference of Circuit Judges. He was elected to the Mississippi Senate in 1999, and served Senate District 1 of DeSoto County for five years. He was vice chairman of

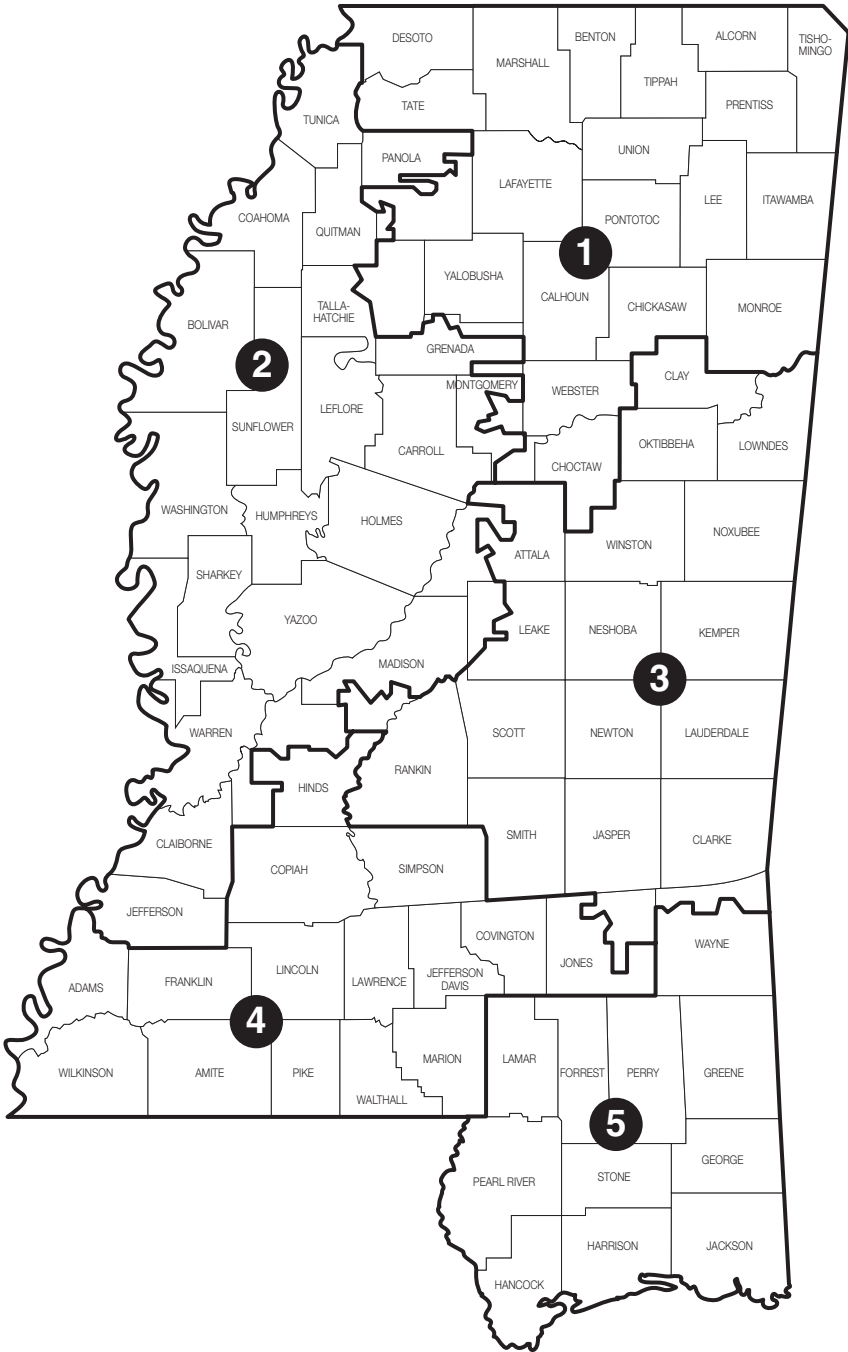
the Universities and Colleges Committee from 2000 to 2003 as well as chairman of the Elections Committee in 2004. He was selected as Legislator of the Year by the Mississippi Law Enforcement Officers Association in 2003. While serving in the Senate, he attended by invitation the National Security Seminar held at the United States Army War College.

He served as Municipal Court Judge for the City of Hernando from 1991 to 1999. He served as Municipal Prosecutor for the City of Horn Lake in 1992. He also served as a Special Master in Chancery Court. Shortly after he graduated from law school, he went to work for what was to become the Austin Law Firm in Hernando and later formed Chamberlin Nowak, P.C. He was

in private law practice for 14 years, and served as attorney for the DeSoto County Board of Supervisors for four years. He is a member of the American Inns of Court.

Justice Chamberlin was born April 6, 1965. He graduated from Hernando High School in 1983. He attended Northwest Mississippi Junior College and later graduated from the University of Mississippi with a Bachelor of Arts degree in history. He earned a law degree from the University of Mississippi School of Law in 1990. Justice Chamberlin is a lifelong resident of north Mississippi and is married to the former Kim White. They have one son, William. They attend the United Methodist Church in Hernando.

MISSISSIPPI COURT OF APPEALS DISTRICTS



MISSISSIPPI COURT OF APPEALS



MISSISSIPPI COURT OF APPEALS JUDGES

(601) 579-4665/f(601) 579-4695

L. Joseph Lee, Chief Judge

jlee@courts.ms.gov
Judicial Assistant: Peggy Brown
(601) 576-4645

Tyree Irving, Presiding Judge

Judicial Assistant: Wanda Zambrano
(601) 576-4644

T. Kenneth Griffis, Presiding Judge

jgriffis@courts.ms.gov
Judicial Assistant: Mary Dooley
(601) 576-4673

Donna M. Barnes, Judge

Judicial Assistant: Mary Nell Jeffreys
(601) 576-4671

David M. Ishee, Judge

jishee@courts.ms.gov
Judicial Assistant: Debra Dodd
(601) 576-4714

Virginia C. Carlton, Judge

Judicial Assistant: Kat Johnson
(601) 576-4678

Eugene L. Fair Jr., Judge

efair@courts.ms.gov
Judicial Assistant: Bea Ratcliffe
(601) 576-4654

Jack L. Wilson, Judge

Judicial Assistant: Lesa Whities
(601) 576-4712

Jim M. Greenlee, Judge

Judicial Assistant: Vera Johnson
(601) 576-4643

Latrice A. Westbrooks, Judge

Judicial Assistant: Susie Robinson
(601) 576-4680



**Chief Judge
L. JOSEPH LEE**
*District 4,
Position 2*

Chief Judge L. Joseph Lee was elected to the Court of Appeals of the State of Mississippi in 1998 for a term beginning in 1999. He was re-elected in 2002 and 2010, without opposition. He is currently serving in his third elected term on the Court. In 2004, he was appointed Presiding Judge of the Court of Appeals. He was appointed as Chief Judge of the Court of Appeals in March, 2011.

Chief Judge Lee was born in 1945. He graduated from Lumberton High School. He attended the University of Southern Mississippi and received his bachelor's degree from William Carey College, now William Carey University. In 1973, he received his law degree from the Jackson School of Law, now Mississippi College School of Law.

Chief Judge Lee practiced law in Jackson and served as adjunct professor of business law at William Carey College. He is admitted to the Mississippi, Texas, and American Bar Associations.

In 2004, Chief Judge Lee was chosen Mississippi College School of Law's Lawyer of the Year. He was recognized by the 2004 session of the Mississippi House of Representatives for his selection as Lawyer of the Year and for his contributions to the community and state. Mississippi College School of Law honored Chief Judge Lee in 2009 with an Honorary Master of Laws degree.

Chief Judge Lee is married to Renee Simon Lee and has three children and two grandchildren.



**Presiding Judge
TYREE IRVING**
*District 2,
Position 1*

Judge Irving was born on July 12, 1946, in Greenwood, Leflore County, Mississippi. However, he grew up on a plantation in southern Leflore County. From a small boy, he worked in the fields plowing, chopping and picking cotton until 1964, when he graduated first in his class, of more than a hundred, from Amanda Elzy High School.

In 1968, he graduated from Jackson State College and taught for four years in the public schools of the Mississippi Delta before going to law school. In 1974, he graduated from the University of Mississippi School of Law. In 1975, he became the first African-American attorney to clerk for the Mississippi Supreme Court when he was hired as a law clerk to the late Chief Justice Robert G. Gillespie.

In 1976, he served as an Earl Warren Fellow intern with the NAACP Legal Defense and Educational Fund in New York, New York. In 1978, he became the first African-American to serve as an assistant United States Attorney in Mississippi since reconstruction when he was hired as an assistant United States Attorney for the Northern District of Mississippi.

In 1988, he became the first African-American attorney to serve as board attorney for a county when he was hired by the Board of Supervisors of Humphreys County.

Prior to being elected to the Mississippi Court of Appeals, Judge Irving was in a general, solo practice in Greenwood. His public clients included: Leflore County School District, city of Itta Bena, Housing Authority of Greenwood, Mississippi, Inc., city of Shaw, Shaw School District, town of Jonestown and town of Sledge. Additionally, Judge Irving has served as attorney for the city of Mound Bayou (founded by ex-slaves and one of the oldest black towns in the United States), the Mound Bayou School District, and the town of Winstonville.

Judge Irving is a past president and treasurer of the Magnolia Bar Association. He is a member

of the Mississippi Bar Association, Magnolia Bar Association, Leflore County Bar Association, the NAACP, and Alpha Phi Alpha Fraternity, Inc. He is a former member of the American Trial Lawyers Association and the Council of School Board Attorneys. He is a Methodist and member of Wesley United Methodist Church in Greenwood.

Judge Irving is married to the former Ethola Garrett Collins, and they have six children.



**Presiding Judge
T. KENNETH GRIFFIS**
*District 3,
Position 2*

Judge Kenny Griffis serves as a Presiding Judge on the Mississippi Court of Appeals.

Judge Griffis is a native of Meridian, Mississippi. He earned accounting and law degrees from the University of Mississippi. He attended Meridian Community College and Mississippi State University—Meridian Branch. He was a Certified Public Accountant from 1984 through 2007.

Judge Griffis is admitted to practice law before the United States Supreme Court, the Fifth Circuit Court of Appeals, the United States District Courts of the Northern and Southern Districts of Mississippi, and all Mississippi state courts. He is a member of The Mississippi Bar, the Magnolia Bar Association, the Madison County Bar Association, the Capital Area Bar Association, and the Rankin County Bar Association. Judge Griffis is also a Fellow of the American Bar Foundation.

Judge Griffis currently serves as a member of the Mississippi Supreme Court’s Advisory Committee on the Civil Rules and as Chair of the Bench Bar Committee of The Mississippi Bar. He has also served on the Committee on Continuing Judicial Education and the Committee on Electronic Filing and Case Management Systems. Judge Griffis has served as adjunct professor at the Mississippi College School of Law, Belhaven University, the University of Mississippi School of Law, and Meridian Community College.

Judge Griffis and his wife, Mary Helen, are

the parents of five boys. They live in Ridgeland and attend Christ United Methodist Church. Judge Griffis has served as a youth Sunday School teacher, a Cub Scout leader, and a coach for more than 80 youth sports teams, including baseball, basketball, soccer, and hockey.



**Judge
DONNA M. BARNES**
*District 1,
Position 2*

Court of Appeals Judge Donna M. Barnes of Tupelo was appointed by Governor Haley Barbour on July 26, 2004, to a vacancy on the court. She was elected in November 2006, and re-elected in November 2010.

Born in Natchez, Judge Barnes earned a Bachelor of Arts degree in 1982 from the University of Mississippi, summa cum laude, with majors in classical civilizations and English. Judge Barnes obtained her Juris Doctorate from the University of Mississippi School of Law, where she graduated magna cum laude in 1985. She was a member of Phi Delta Phi legal fraternity and a research editor of Mississippi Law Journal. Judge Barnes is a member of the University of Mississippi Lamar Order.

For more than 18 years, Judge Barnes practiced law with Mitchell, McNutt and Sams in Tupelo with concentrations in appellate practice, real estate, health care, employment discrimination, Section 1983 litigation and professional liability defense.

In 1996, she took sabbatical to study law at the University of Cambridge, where she was one of three American students in the LL.M. program which that year admitted 152 attorneys from 48 countries. Her studies included international commercial litigation, comparative public law, international human rights, and law and practice of civil liberties. A member of Magdalene College, Judge Barnes earned her Master of Law from the University of Cambridge in 1997.

Admitted to the practice of law in Mississippi in 1985, Judge Barnes is qualified to practice before the United States Supreme Court, the United States Court of Appeals for the Fifth

Circuit, the United States District Courts for the Northern and Southern Districts of Mississippi, and all Mississippi state courts. She is a member of the Mississippi Bar and the Lee County Bar Association. She has served as president of both the Lee County Bar Association and the Lee County Young Lawyers Association.

Judge Barnes is an inaugural member of the Mississippi Access to Justice Commission. She is a fellow of the Mississippi Bar Foundation. She is currently a member of the Criminal Code Revision Consulting Group and is a former member of the Judicial Advisory Study Committee.

Judge Barnes is a member of All Saints Episcopal Church and the Mary Stuart Chapter, Daughters of the American Revolution, both of Tupelo.



Judge
DAVID M. ISHEE
District 5,
Position 2

Judge David M. Ishee was born in Gulfport in 1963. He graduated from the University of Southern Mississippi in 1985 with a Bachelor of Science Degree in History. He also attended the University of London and received his Juris Doctorate from the University of Mississippi School of Law.

Upon graduation from Ole Miss, he entered private law practice with his late father-in-law, Elmo Lang of Pascagoula. He practiced for almost 14 years in the law firm of Lang and Ishee. During that time, he was involved in extensive litigation in civil, criminal, and domestic relations law. He was appointed by the Circuit Court judges of the Second and Nineteenth Districts to head four death penalty defense teams and was lead counsel on numerous appeals and oral arguments before the Mississippi Supreme Court. Ishee also served as board attorney for the Gulf Coast Regional Waste Water Authority from 1992 to 1996.

While living in Jackson County, he served on the Jackson County Republican Executive Board, was chairman of the 1992 Jackson County Republican Convention, and was a delegate to the 1992 Mississippi State Republican Convention.

In 1993, at the age of 29, he was appointed Municipal Court Judge for the City of Pascagoula. He was the youngest Municipal Court Judge in the state of Mississippi. He was re-appointed for a second term in 1996. During this time, he also served one year as Interim Municipal Court Judge for the City of Ocean Springs, and was Judge Pro Tem for the Jackson County Youth Court, where he presided over numerous child custody hearings as well as hearings involving abused and delinquent children.

Upon returning to Gulfport, Ishee was appointed Municipal Court Judge for the City of Gulfport in October of 1999. He joined the law firm of Franke, Rainey and Salloom, PLLC, in 2002, where he represented local hospitals in medical malpractice cases and numerous businesses in general insurance defense.

Judge Ishee is admitted to and has extensively practiced in all federal and state courts in the state of Mississippi, and is admitted to practice in the United States Court of Appeals for the Fifth Circuit. He has served as president of the Jackson County Young Lawyers Division, and secretary, vice-president, and president of the Jackson County Bar Association. In addition to his participation on numerous committees of the Mississippi Bar, he was appointed as president of its Historical Preservation Committee.

Judge Ishee was an adjunct professor for two years at Mississippi Gulf Coast Community College, teaching the subjects of Torts and Personal Injury Law in the paralegal program. He currently teaches both Business Law and Professional Ethics at Southern Miss Gulf Coast. He is also an adjunct professor at both the University of Mississippi School of Law and Mississippi College School of Law, where he teaches Criminal Litigation and Trial Practice.

In September 2004, Judge Ishee was appointed to the Mississippi Court of Appeals by then Governor Haley Barbour. He was appointed by the Chief Justice of the Mississippi Supreme Court to chair the Criminal Section of the Model Jury Instructions Revision Committee, which revised the Criminal Model Jury Instructions for the Circuit Courts of Mississippi. He has also served as a special Circuit Court Judge and Chancellor in numerous counties by appointment of the Mississippi Supreme Court.

Judge Ishee has served as President of the Southern Mississippi Law Constituent Society since 2010 and is a member of the Law Alumni Board of Directors for Ole Miss Law School.

Ishee was inducted into the University of Southern Mississippi Alumni Hall of Fame in 2014, and as a Fellow of the Mississippi Bar in 2016.

He is a member of Trinity United Methodist Church, where he has been the conference delegate to the Mississippi Methodist Conference for eight years, and serves as an usher and a staff Parish Committee member.

He is married to the former Linda Lang of Pascagoula. They have one daughter, Lauren. Judge Ishee is the son of Mrs. Doris Ishee of Gulfport and the late Representative Roger Ishee.



Judge
VIRGINIA C.
CARLTON
District 4,
Position 1

Judge Virginia Carter Carlton has served as an Associate Judge on the Mississippi Court of Appeals since January 2007. Judge Carlton has spent her career in public service. She served as State Representative for Mississippi House District 100 from January 2004 to December 2006. She also served as an assistant district attorney, county public defender, U.S. Army JAG officer, USAR military judge, and Mississippi Supreme Court law clerk.

As a JAG officer, Judge Carlton served the Army in legal positions including prosecutor, defense counsel, deputy staff judge advocate, staff judge advocate, and Special Assistant U.S. Attorney for the Army in Hawaii. She was merit selected to serve as a military trial judge in the USAR, where she presided over courts-martial. She was subsequently merit selected to serve as an associate appellate judge on the U.S. Army Court of Criminal Appeals, where she participated in approximately 90 cases and served as lead judge in 40 cases.

Upon retirement from the military in February 2015, Judge Carlton held the rank of Colonel with more than 24 years of service. She was awarded the following military awards and medals: Legion of Merit, Meritorious Service Medal (7th Award), Army Commendation Medal (4th Award), Army Reserve Components Achievement Medal (3rd

Award), National Defense Service Medal, Global War on Terrorism Service Medal, Army Service Ribbon, Overseas Service Ribbon (1st Award), and Armed Forces Reserve Medal (with M Device and with 10 year device). She was also awarded a foreign badge, the German Sports Medal, during her tour of duty in Germany, and the Mississippi Magnolia Cross by the Mississippi National Guard and Governor Phil Bryant.

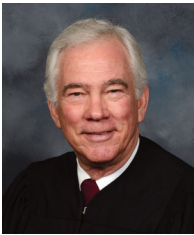
Judge Carlton attended the University of Mississippi for her undergraduate and law school education. She received her B.B.A. degree in 1986 and earned her Juris Doctorate in 1989. As an Ole Miss undergraduate, she served in the campus senate and was a member of the Chi Omega sorority, Tau chapter. She also served in many organizations during law school, including the Mississippi Law Journal, the Moot Court Board and its Executive Board, and Mays Inn of Phi Delta Phi legal fraternity (clerk). She continued her professional education in the military, and is a graduate of the U.S. Army Command and Staff College as well as the U.S. Army War College.

Judge Carlton actively contributes to the bench and bar. She served on the Mississippi Children's Justice Commission for three years and she also served on various other study commissions and advisory groups. She served as an adjunct professor at both Mississippi College School of Law and Belhaven University. She is a director and board member of the North Jackson Rotary Club, Jackson Prep PAT and Applause Board, Chi Omega Sorority Alumni, and the Jackson Symphony League. She previously served as a board member of the Tri-Community Fire Department and as a member of the Junior Auxiliary Club in Marion County. Judge Carlton is a member of Official First Families of Mississippi, for which she serves as Chancellor General. She often teaches continuing education classes at the request of the Mississippi Bar and other organizations.

Judge Carlton is admitted to practice in Mississippi and before the U.S. Supreme Court, the Army Court of Criminal Appeals, and the U.S. Court of Appeals for the Armed Forces. She is both a member and a fellow of the Mississippi Bar Association and of the American Bar Association. In 2010, she was named one of the top 50 women in business by the Mississippi Business Journal. In 2013, she was named as a woman of the year by the

Mississippi Commission on the Status of Women for her military service. When serving as a State Representative, Judge Carlton was named Outstanding Legislator for Juvenile Justice and as a Friend of Adult Education.

Judge Carlton is a native of Columbia, Mississippi, and currently resides with her family near her duties at the court in Jackson, Mississippi. She is married to Dr. Scott Carlton, a family physician and Lieutenant Colonel in the Mississippi Army National Guard. The Carltons have three children and are members of First Baptist Church in Jackson.



Judge
EUGENE L. FAIR JR.
District 5,
Position 1

Court of Appeals Judge Eugene Love Fair Jr. of Hattiesburg was appointed by Gov. Haley Barbour on January 1, 2012, and took the oath of office January 3. Judge Fair filled a vacancy in District 5, Place 1, created by the retirement of Judge William H. Myers.

Judge Fair previously served for five years as a chancellor on the 10th Chancery Court, which includes Forrest, Lamar, Marion, Pearl River and Perry counties. Before his election to the bench, he served by appointment as a special master in Chancery Court and as a guardian ad litem representing the interests of children in Youth Court.

He engaged in the private practice of law in Hattiesburg for 34 years. During that time, he tried cases in 57 courthouses across the state. He was admitted to practice law in all state courts, the U.S. District Courts for the Northern and Southern Districts of Mississippi, the Fifth U.S. Circuit Court of Appeals, the Supreme Court of Texas and the U.S. Supreme Court.

Former Supreme Court Chief Justice Neville Patterson appointed him to the Mississippi Ethics Commission in 1984. He served on the commission for 20 years, including 19 years as vice-chair. He was board attorney for the Pat Harrison Waterway District 1988-1992.

Judge Fair grew up in Louisville, but he has generations of roots in the Pine Belt. His great-

grandfather, G. C. Robertson, was the last Justice of the Peace of District 2, Perry County, before the county was split to form Perry and Forrest counties. His grandfather, Stokes Robertson Sr., served as the first member of the House of Representatives from Forrest County and as Clerk of the House for four years. He was also Revenue Agent of the state of Mississippi, a statewide elective officer later renamed State Tax Collector. Judge Fair is the nephew of the late Mississippi Supreme Court Justice Stokes V. Robertson Jr.

Judge Fair earned a Bachelor of Arts degree from the University of Mississippi and a law degree from the University of Mississippi School of Law. During college, he was editor of *The Daily Mississippian* twice. It became a five day a week newspaper during his first term. He helped pay his way through college with freelance writing for newspapers. He began working as a newspaper stringer at age 15, calling in sports scores and writing obituaries. He did freelance work for the *Clarion-Ledger*, the now defunct *Jackson Daily News*, the *Meridian Star*, the *Associated Press* and *United Press International*. He is a member of the 1966 undergraduate Hall of Fame at Ole Miss, and in law school was on the board of the *Mississippi Law Journal*.

After he earned his law degree in 1968, he served for four years on active duty with the U.S. Navy Judge Advocate General Corps during the Vietnam War, earning the rank of Lieutenant Commander. He spent two years as chief legal officer at the Naval Air Station at Corpus Christi, Texas. He was a reservist in the Jackson Naval J.A.G. Reserve Unit for five years.

He served as treasurer, secretary, vice-president and president of both the Young Lawyers Section of the Mississippi Bar and the South Central Mississippi Bar Association. He held numerous leadership positions in the Mississippi Bar. He is a two term former member of the Board of Bar Commissioners, a Fellow of the Mississippi Bar Foundation since 1981, and a Charter Life Fellow of the Young Lawyers.

He served on the Mississippi Supreme Court Committee on Technology in the Courts 1988-1990, and on the Judicial Advisory Study Committee Technology Consulting Group 1993-1994.

He helped screen and recommend lawyers to fill judicial vacancies as a member of Gov. William Winter's Judicial Nominating

Committee, the first such Committee in Mississippi. A similar group, Gov. Barbour's Judicial Appointments Advisory Committee, recommended Fair to fill the vacancy on the Court of Appeals.

He is an Eagle Scout, and has remained active in Scouting activities.

He is a trustee, elder and Sunday School teacher at Westminster Presbyterian Church in Hattiesburg. He is a former chairman of deacons, and was church treasurer for 18 years.

He is married to Dr. Estella Galloway Fair. They have two daughters and four grandchildren. Melissa Fair Wellons, M.D. is Assistant Professor of Endocrinology, Diabetes and Metabolism at the Vanderbilt University School of Medicine. Julia Fair Myrick is a screenwriter and motion picture producer in Pasadena, California.



**Judge
JACK L. WILSON**
*District 3,
Position 1*

Judge Jack L. Wilson of Madison was appointed to the Court of Appeals by Gov. Phil Bryant on July 1, 2015. He was elected to an eight-year term in November 2016.

Judge Wilson grew up in Jackson and Tupelo and graduated from Tupelo High School. He attended the University of Memphis, earned a Bachelor of Accountancy from the University of Mississippi, and received a Juris Doctor from Harvard Law School, where he was an editor of the Harvard Law Review. After law school, he clerked for Judge Gerald Bard Tjoflat of the U.S. Court of Appeals for the Eleventh Circuit.

Judge Wilson previously practiced law with the firm of Bradley Arant Boulton Cummings LLP in Jackson, Miss., and Mayer Brown LLP in Washington, DC. His practice focused on appellate litigation and general civil litigation involving a variety of subject matters including business and commercial disputes, class and collective actions, and arbitrations. He represented clients in state and federal trial and appellate courts throughout the country,

including the U.S. Supreme Court. Judge Wilson also served as Deputy Counsel and later Chief Counsel to Gov. Phil Bryant.

He is admitted to practice in all state and federal courts in Mississippi; in the District of Columbia; in the U.S. Courts of Appeals for the Fifth, Seventh, and Eleventh Circuits; and in the U.S. Supreme Court. He previously served as a commissioner on the Uniform Law Commission, as a member of the Board of Trustees of the Mississippi Public Employees Retirement System, and as president of the Mississippi Lawyers Chapter of The Federalist Society. He has also served as an adjunct instructor at the Mississippi College School of Law.

Judge Wilson and his wife, Amanda, have three children, Emily, Jack, and Henry. They live in Madison, where they are active members of Pear Orchard Presbyterian Church.



**Judge
JIM M. GREENLEE**
*District 1,
Position 1*

Judge Jim M. Greenlee of Oxford joined the Mississippi Court of Appeals on January 20, 2016. Gov. Phil Bryant appointed him to the vacancy created when Judge James D. Maxwell II was appointed to the Mississippi Supreme Court. Judge Greenlee was elected without opposition to an eight-year term in November 2016.

He previously served as U.S. Attorney for the Northern District of Mississippi from 2001 to 2010. As U.S. Attorney, he headed the office which prosecuted public corruption and judicial influence cases and major drug distribution networks, and assisted in the cold case investigation of the murder of Emmett Till. He served on the initial U.S. Attorney General's Advisory Council during the aftermath of 9/11. He also served on the Office of Management and Budget Subcommittee, White Collar Crime Subcommittee, Controlled Substances/Asset Forfeiture Subcommittee, and the Terrorism and National Security Subcommittee.

Greenlee's service as a federal prosecutor

spanned 22 years. He was an assistant U.S. attorney in the Civil Division of the U.S. Attorney's office from 1987 until 2001. He became the lead civil fraud attorney, trying bankruptcy, tort, employment rights, eminent domain, and white collar criminal cases.

He was in private practice with the Oxford firm of Holcomb Dunbar from 2010 until his appointment to the Court of Appeals in 2016.

Judge Greenlee earned a bachelor of engineering degree from the University of Mississippi in 1974 and a law degree in 1981. He served active duty in the U.S. Navy 1974 to 1978, and in the U.S. Navy Reserve until 1997. During his reserve service, he was commanding officer of a Reserve Naval Criminal Investigative Service (NCIS) Unit. He retired at the rank of captain.



**Judge
LATRICE A.
WESTBROOKS**

*District 2,
Position 2*

Judge Latrice Westbrook of Lexington was sworn in as a member of the Mississippi Court of Appeals on Jan. 3, 2017. She was elected November 8, 2016, to Court of Appeals District 2, Position 2.

Judge Westbrook was born in Memphis, Tennessee. She earned a Bachelor of Science degree from Austin Peay State University in Clarksville, Tenn. She earned a law degree from the University of Detroit Mercy School of Law in 1997. She was admitted to the Mississippi Bar that same year.

She became an assistant district attorney in the Second Circuit District of Harrison, Hancock, and Stone counties in October 1997. She was the first African American woman assistant district attorney in the Second Circuit District. She joined the Jackson law firm of Byrd and Associates in 2000, then opened her own law practice in 2001, representing clients in both criminal and civil matters.

She served as prosecutor for the city of Durant and as city attorney for the town of Isola. For almost 10 years, she served as a public defender in Holmes County. In 2013, she became interim

communications director for Jackson Mayor Chokwe Lumumba, then joined the Jackson City Attorney's office as legal counsel for the Jackson Police Department. She returned to private law practice in 2014. She served as Municipal Judge for the city of Lexington before she was elected to the Court of Appeals.

She has worked in conjunction with the Magnolia Bar Association, One Voice, the NAACP, the Mississippi Center for Justice, the Southern Poverty Law Center's Mississippi Youth Justice Project, and the ACLU. She served as a Southeast Regional and Central Director of the Magnolia Bar Association. She previously chaired the Criminal Justice Committee for the State Conference of the NAACP. She is a member of the Mississippi Bar, Magnolia Bar Association, National Bar Association, the National Conference of Black Lawyers, the Capital Area Bar Association, and the Metro Jackson Black Women Lawyers Association. She is a former member of the Mississippi Association for Justice and the Mississippi Public Defenders Association. She is a life member of the NAACP, past board member of Leadership Greater Jackson Alumnae, past board member of the I.S. Sanders YMCA, and past board member of the National African American Student Leadership Conference.

**MISSISSIPPI APPELLATE COURTS
CONTACT INFORMATION**

Carroll Gartin Justice Building
450 High Street, Jackson 39201
P.O. Box 117, Jackson 39205
www.courts.ms.gov

Mississippi Supreme Court
Carroll Gartin Justice Building
450 High Street, Jackson 39201
P.O. Box 117, Jackson 39205
(601) 359-3697/f(601) 359-2443

Mississippi State Law Library
Carroll Gartin Justice Bldg.
450 High St., Jackson 39201
P.O. Box 1040, Jackson 39215-1040
(601) 359-3672/f(601) 359-2912

Mississippi Court of Appeals
Carroll Gartin Justice Building
450 High Street, Jackson 39201
P.O. Box 22847, Jackson 39205
(601) 359-4665/f(601) 359-4695

COURT ADMINISTRATION

Carroll Gartin Justice Building
450 High Street, Jackson, MS 39201
P.O. Box 117, Jackson, MS 39205
(601) 359-3697/f(601) 359-2443

Hubbard (Hubby) T. Saunders IV
Court Administrator and Counsel
hsaunders@courts.ms.gov
(601) 359-2182

John S. Grant IV
Court of Appeals Editor of Opinions
(601) 576-4726

Mary Jacq Easley
Supreme Court Editor of Opinions
measley@courts.ms.gov
(601) 359-1858

Camille H. Evans
Court of Appeals Asst. Court Administrator
cevens@courts.ms.gov
(601) 576-4725

CLERK'S OFFICE

Carroll Gartin Justice Building
450 High Street, Jackson 39201
P.O. Box 249, Jackson 39205
(601) 359-3694/f(601) 359-2407

Muriel Ellis
Court Clerk
sctclerk@courts.ms.gov
(601) 359-2175

Rusty Holmes
Chief Deputy Clerk

Debra Knapp
Deputy Clerk

CENTRAL LEGAL

(601) 359-3072

Robert E. "Rob" Nations Jr., Director
rnations@courts.ms.gov
(601) 359-3072

Mississippi State Law Library
(601) 359-3672/f(601) 359-2912
Stephen Parks
State Librarian
sparks@courts.ms.gov

ADMINISTRATIVE OFFICE OF COURTS

450 High Street, Jackson 39201
P.O. Box 117, Jackson 39205
(601) 576-4630/f(601) 576-4639

Kevin Lackey
Administrative Office of Courts Director
lackeyjk@courts.ms.gov
(601) 576-4636

Joseph K. Craft
State Drug Court Coordinator
jcraft@courts.ms.gov
(601) 576-4631

Ta'Shia Gordon
Deputy Director
tgordon@courts.ms.gov
(601) 576-4632

Billy Saul
Drug Court Compliance Officer
bsaul@courts.ms.gov
(601) 576-4626

Wende Weaver
Administrative Assistant
wweaver@courts.ms.gov
(601) 576-4628

Mary Fuller
Youth Court Program Director
mfuller@courts.ms.gov
(601) 576-4627

Beverly Pettigrew Kraft
Public Information Officer
bkraft@courts.ms.gov
(601) 576-4637

Danya Knox
Research Statistician
dknox@courts.ms.gov
(601) 576-4630

SENIOR STATUS JUDGES

William (Bill) Agin..... <i>Retired County Court Judge</i>	P.O. Box 577, Madison 39130.....	(601) 331-2333
Thomas W. Allen..... <i>Retired County Court Judge</i>	3840 Highway 6, Lyon 38645.....	(662) 902-5877
Robert W. Bailey..... <i>Retired Circuit Judge</i>	P.O. Box 1167, Meridian 39301-1167.....	(601) 485-4119/(601) 479-3381
Mills Barbee..... <i>James W. Amos Law Offices</i>	2430 Caffey St., Hernando 38632.....	(662) 429-7873 Ext. 33/f(662) 429-3938
William Barnett..... <i>Retired County Court Judge</i>	2248 Sheffield Dr., Jackson 39211.....	(601) 981-8705/c(601) 946-5333
James D. Bell..... <i>Retired County Court Judge</i>	318 S. State St., Jackson 39201.....	(601) 981-9221/(601) 906-9119
Larry Buffington..... <i>Retired Chancellor</i>	P.O. Box 924, Collins 39428.....	(601) 765-7374/(601) 765-8944
Kay Cobb..... <i>Retired Supreme Court Justice</i>	P.O. Box 604, Oxford 38655-0604.....	(662) 816-9316
R. Kenneth Coleman..... <i>Retired Circuit Judge</i>	P.O. Box 1995, New Albany 38652.....	c(662)316-2636
Oliver E. Diaz Jr..... <i>Retired Supreme Court Justice Court of Appeals Judge</i>	416 East Amite St., Jackson 39201.....	(601) 944-1008
Robert W. Elliott..... <i>Retired Circuit Judge</i>	102 North Main St., Ripley 38663.....	(662) 837-7884
James B. Floyd III..... <i>Retired County Court Judge</i>	4773 Sunningdale Dr., Belden 38826.....	(662)844-4597/c(662) 401-2903
Barry W. Ford..... <i>Retired Circuit Judge</i>	P.O. Box 14167, Jackson 39236.....	(601) 351-8925
Janace H. Goree..... <i>Retired Chancellor</i>	3726 Bend Rd., Vaughan 39179.....	(601) 278-1722/f(662) 673-0093
Hicks G. Hosemann..... <i>Retired County Court Judge</i>	1939 Trinity Street, Liberty, Texas 77575.....	(713) 205-5124
John N. Hudson..... <i>Retired County Court Judge</i>	P.O. Box 545, Natchez 39121.....	(601) 807-5837
Henry L. Lackey..... <i>Retired Circuit Judge</i>	P.O. Drawer T, Calhoun City 38916.....	(662) 628-5755/c(662) 628-9428
Robert L. Lancaster..... <i>Retired Chancellor</i>	P.O. Box 884, Columbus 39703-0884.....	(662) 327-4026/(662) 425-4014
Billy Joe Landrum..... <i>Retired Circuit Judge</i>	2102 Hwy 15 South, Ovett 39464.....	(601) 428-4460/(601) 319-5599

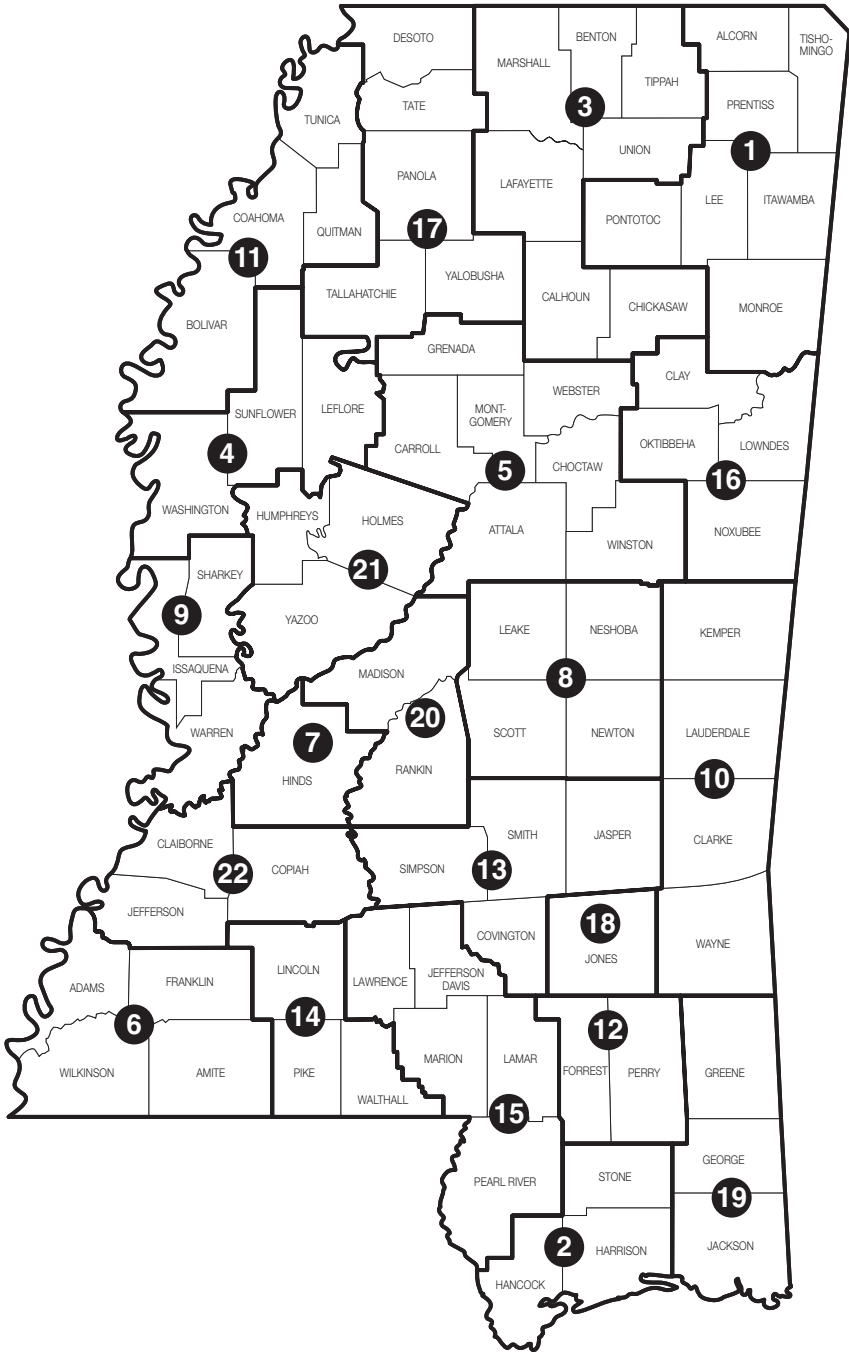
William J. Lutz..... <i>Retired Chancellor</i>	613 Steed Road, Ridgeland 39157	(601) 879-3361
Richard McKenzie..... <i>Retired Circuit Judge</i>	P.O. Box 1403, Hattiesburg 39403	(601) 544-1008
Charles R. McRae..... <i>Retired Supreme Court Justice</i>	P.O. Box 33, Jackson 39205.....	(601) 354-4662
J. N. Randall Jr..... <i>Retired Chancellor</i>	P.O. Box 748, Gulfport 39502.....	(228) 863-3616/(228) 365-3600
Samac S. Richardson..... <i>Retired Circuit Judge</i>	109 Deletha Lane, Brandon 39042.....	(601) 825-3363/c(601) 826-3400
Larry E. Roberts..... <i>Retired Court of Appeals Judge</i>	P.O. Box 1002, Meridian 39202	(601) 490-0768
John C. Ross Jr..... <i>Retired Chancellor</i>	P.O. Box 1681, Corinth 38835.....	(662) 284-0085
Betty W. Sanders..... <i>Retired Circuit Judge</i>	107 Kimbrough St., Greenwood 38930.....	(662) 453-8703
Stephen B. Simpson..... <i>Retired Circuit Judge</i>	2510 14 th Street, Ste. 101, Gulfport 39501	(228) 864-0161
Patricia D. Beckett Sims..... <i>Retired County Court Judge</i>	5013 Par Drive, Flower Mound, Texas 75028.....	N/A
James W. Smith Jr..... <i>Retired Supreme Court Justice</i>	500 East Capitol Street, Suite 3, Jackson 39201	(601) 969-0999
Gwendolyn J. Thomas..... <i>Retired County Court Judge</i>	P.O. Box 1509, Cleveland 38732	(662) 402-4608
Kenneth L. Thomas..... <i>Retired Circuit Judge</i>	P.O. Box 1509, Cleveland 38732 ..	(662)843-4608/(662)719-3539/f(662)843-6308
John White Valentine..... <i>Retired County Court Judge</i>	1215 Farmer Street, Cleveland 38732	(662) 843-3061
Kosta N. Vlahos..... <i>Retired Circuit Judge</i>	P.O. Box 7575, Gulfport 39506	(228) 896-5430/c(228) 324-2246
Frank G. Vollor..... <i>Retired Circuit Judge</i>	P.O. Box 821355, Vicksburg 39183	(601) 638-8686/(601) 529-1554
Michael H. Ward..... <i>Retired County Court Judge</i>	4806 Harrison Circle, Gulfport 39507.....	(228) 867-6210/(228) 861-8731
Pat H. Watts Jr..... <i>Retired Chancellor</i>	3906 Pine St., Pascagoula 39567.....	(228) 217-6515/(228) 762-0292

CIRCUIT & CHANCERY COURT DISTRICTS BY COUNTY

CHANCERY DISTRICT	CIRCUIT DISTRICT
Adams.....	17.....6
Alcorn.....	1.....1
Amite.....	4.....6
Attala.....	6.....5
Benton.....	18.....3
Bolivar.....	7.....11
Calhoun.....	18.....3
Carroll.....	6.....5
Chickasaw.....	14.....3
Choctaw.....	6.....5
Claiborne.....	17.....22
Clarke.....	12.....10
Clay.....	14.....16
Coahoma.....	7.....11
Copiah.....	15.....22
Covington.....	13.....13
DeSoto.....	3.....17
Forrest.....	10.....12
Franklin.....	4.....6
George.....	16.....19
Greene.....	16.....19
Grenada.....	3.....5
Hancock.....	8.....2
Harrison.....	8.....2
Hinds.....	5.....7
Holmes.....	11.....21
Humphreys.....	9.....21
Issaquena.....	9.....9
Itawamba.....	1.....1
Jackson.....	16.....19
Jasper.....	2.....13
Jefferson.....	17.....22
Jefferson Davis.....	13.....15
Jones.....	19.....18
Kemper.....	6.....10
Lafayette.....	18.....3
Lamar.....	10.....15
Lauderdale.....	12.....10
Lawrence.....	13.....15
Leake.....	11.....8
Lee.....	1.....1

CHANCERY DISTRICT	CIRCUIT DISTRICT
Leflore.....	7.....4
Lincoln.....	15.....14
Lowndes.....	14.....16
Madison.....	11.....20
Marion.....	10.....15
Marshall.....	18.....3
Monroe.....	1.....1
Montgomery.....	3.....5
Neshoba.....	6.....8
Newton.....	2.....8
Noxubee.....	14.....16
Oktibbeha.....	14.....16
Panola.....	3.....17
Pearl River.....	10.....15
Perry.....	10.....12
Pike.....	4.....14
Pontotoc.....	1.....1
Prentiss.....	1.....1
Quitman.....	7.....11
Rankin.....	20.....20
Scott.....	2.....8
Sharkey.....	9.....9
Simpson.....	13.....13
Smith.....	13.....13
Stone.....	8.....2
Sunflower.....	9.....4
Tallahatchie.....	7.....17
Tate.....	3.....17
Tippah.....	18.....3
Tishomingo.....	1.....1
Tunica.....	7.....11
Union.....	1.....3
Walthall.....	4.....14
Warren.....	9.....9
Washington.....	9.....4
Wayne.....	19.....10
Webster.....	14.....5
Wilkinson.....	17.....6
Winston.....	6.....5
Yalobusha.....	3.....17
Yazoo.....	11.....21

CIRCUIT COURT DISTRICTS



CIRCUIT COURT JUDGES

Circuit Courts hear felony criminal prosecutions and civil lawsuits. Circuit Courts hear appeals from County, Justice, and Municipal courts and from administrative boards and commissions such as the Workers' Compensation Commission and the Mississippi Department of Employment Security.

There are 22 Circuit Court districts and 57 Circuit Court judges. The number of Circuit judges per district ranges from one to four. Circuit Court judges are selected in non-partisan elections to serve four-year terms.

Trials are heard with a 12-member jury and usually one or two alternate jurors. A judge may preside without a jury if the dispute is a question of law rather than fact.

1ST CIRCUIT DISTRICT

Alcorn, Tishomingo, Prentiss, Pontotoc, Lee, Itawamba, & Monroe Counties

Judge..... Thomas J. Gardner III ...P.O. Drawer 1100, Tupelo 38802.....(662) 432-2360....f(662) 680-6078
 Ct. Rept. Melanie Owen 300 Bass Lane, Pontotoc 38863.....(662) 432-2360f(662) 680-6078
 D. Ct. Admn. Angela Stewart..... P.O. Drawer 1100, Tupelo 38802(662) 432-2364f(662) 680-6078
 Staff Atty Susan O. Winters P.O. Drawer 1100, Tupelo 38802(662) 432-2361f(662) 680-6078
 Staff Atty Megan D. French..... P.O. Drawer 1100, Tupelo 38802(662) 432-2362f(662) 680-6078

Judge..... Paul S. FunderburkP.O. Drawer 1100, Tupelo 38802.....(662) 432-2360....f(662) 680-6078
 Ct. Rept. Sharen K. Sewell..... 165 N. Main Street, Pontotoc 38863 ..(662) 432-2360f(662) 680-6078
 D. Ct. Admn. Angela Stewart..... P.O. Drawer 1100, Tupelo 38802(662) 432-2364f(662) 680-6078
 Staff Atty Susan O. Winters P.O. Drawer 1100, Tupelo 38802(662) 432-2361f(662) 680-6078
 Staff Atty Megan D. French..... P.O. Drawer 1100, Tupelo 38802(662) 432-2362f(662) 680-6078

Judge..... Jim S. Pounds.....P.O. Box 316, Booneville 38829.....(662) 728-2365....f(662) 680-6078
 Ct. Rept. Karen M. (Kay) Larson .. 2202 Willow Road, Corinth 38834(662) 432-2360f(662) 680-6078
 D. Ct. Admn. Angela Stewart..... P.O. Drawer 1100, Tupelo 38802(662) 432-2364f(662) 680-6078
 Staff Atty Susan O. Winters P.O. Drawer 1100, Tupelo 38802(662) 432-2361f(662) 680-6078
 Staff Atty Megan D. French..... P.O. Drawer 1100, Tupelo 38802(662) 432-2362f(662) 680-6078

Judge..... James L. Roberts Jr.....P.O. Drawer 1100, Tupelo 38802.....(662) 432-2360....f(662) 680-6078
 Ct. Rept. Kim Bounds 849 Country Oaks Cir., Tupelo 38801 ..(662) 432-2360f(662) 680-6078
 D. Ct. Admn. Angela Stewart..... P.O. Drawer 1100, Tupelo 38802(662) 432-2364f(662) 680-6078
 Staff Atty Megan D. French..... P.O. Drawer 1100, Tupelo 38802(662) 432-2362f(662) 680-6078
 Staff Atty Susan O. Winters P.O. Drawer 1100, Tupelo 38802(662) 432-2361f(662) 680-6078
 Law Clerk..... Kaci Robinson Hargett ... P.O. Drawer 1100, Tupelo 38802(662) 432-2363f(662) 680-6078
 PT Secretary Charlotte Williams..... P.O. Drawer 1100, Tupelo 38802(662) 432-2365f(662) 680-6078

2ND CIRCUIT DISTRICT

Hancock, Harrison, & Stone Counties

Judge..... Lisa P. Dodson.....P.O. Box 1461, Gulfport 39502.....(228) 865-4220....f(228) 865-4376
 Ct. Rept. Michelle Stewart..... P.O. Box 1461, Gulfport 39502(228) 865-4016f(228) 865-4376
 Ct. Admn/Crim. Monica Hewes P.O. Box 1461, Gulfport 39502(228) 865-4220f(228) 865-4376
 Ct. Admn/Civil.. Shirley Valdez P.O. Box 1461, Gulfport 39502(228) 865-4006f(228) 865-1636
 Staff Atty Constance Jordan P.O. Box 1461, Gulfport 39502(228) 865-4110f(228) 865-1636

Judge..... Roger T. ClarkP.O. Box 1461, Gulfport 39502..... (228) 865-4165 ... f(228) 865-1636
 Ct. Rept. Michelle Woods P.O. Box 1461, Gulfport 39502(228) 865-1630f(228) 865-1636
 Ct. Admn..... Mary Ladner P.O. Box 1461, Gulfport 39502(228) 865-4165f(228) 865-1636
 Ct. Admn/Crim. Janice Malley..... P.O. Box 1461, Gulfport 39502(228) 865-4104f(228) 865-6536
 Ct. Admn/Civil . Shirley Valdez..... P.O. Box 1461, Gulfport 39502(228) 865-4006f(228) 865-1636

Judge..... Christopher L. Schmidt.P.O. Box 1461, Gulfport 39502.....(228) 865-4104 ...f(228) 867-6536
 Ct. Rept. Huey Bang P.O. Box 1461, Gulfport 39502(228) 865-1023f(228) 867-6536
 Ct. Admn/Crim. Janice Malley..... P.O. Box 1461, Gulfport 39502(228) 865-4104f(228) 867-6536
 Ct. Admn/Civil.. Shirley Valdez P.O. Box 1461, Gulfport 39502(228) 865-4006f(228) 865-1636
 Staff Atty Shannon Favre..... P.O. Box 1461, Gulfport 39502(228) 865-1038f(228) 867-6536

Judge..... Lawrence Bourgeois Jr..P.O. Box 1461, Gulfport 39502..... (228) 865-4262....f(228) 865-1636
 Ct. Rept. Angelle T. Webb..... P.O. Box 1461, Gulfport 39502(228) 865-4261f(228) 865-1636
 Ct. Admn/Crim. Monica Hewes P.O. Box 1461, Gulfport 39502(228) 865-4220f(228) 865-4376

Ct. Admn/Civil..Shirley Valdez..... P.O. Box 1461, Gulfport 39502(228) 865-4006f(228) 865-1636
 Staff Atty Pepper A. Pearson P.O. Box 1461, Gulfport 39502 (228) 863-4638f(228) 865-1636

3RD CIRCUIT DISTRICT

Benton, Calhoun, Chickasaw, Lafayette, Marshall, Tippah, & Union Counties

Judge..... Andrew K. Howorth.....1 Courthouse Sq., Ste. 101, Oxford 38655(662) 234-3013.... f(662) 236-3401
 Ct. Rept. Christy L. Adair P.O. Box 504, New Albany 38652.....(662) 316-4242 ... f(662) 534-6215
 Ct. Rept. Anita G. Moss P.O. Box 47, Houston 38851(662) 456-5464No Fax
 Ct. Rept. Dana Rakestraw..... P.O. Box 982, New Albany 38652..... (662) 317-1565No Fax
 Ct. Rept. Margaret B. Fair Lafayette County, Oxford 38655.....(662) 236-2808f(662) 236-0238
 Courthouse 3rd Floor
 Ct. Admn..... Ashley Roberts..... 1 Courthouse Sq., Ste. 101, Oxford 38655 (662) 234-3013f(662) 236-3401
 Staff Atty Mary Ann Percy..... 1 Courthouse Sq., Ste. 101, Oxford 38655 .(662) 234-3013.....f(662) 236-3401

Judge..... John A. GregoryP.O. Box 466, Okolona 38860(662) 447-5454.... f(662) 447-3332
 Ct. Rept. Christy L. Adair P.O. Box 504, New Albany 38652.....(662) 316-4242f(662) 534-6215
 Ct. Rept. Anita G. Moss P.O. Box 47, Houston 38851(662) 456-5464No Fax
 Ct. Rept. Dana Rakestraw..... P.O. Box 982, New Albany 38652..... (662) 317-1565No Fax
 Ct. Rept. Margaret B. Fair Lafayette County, Oxford 38655.....(662) 236-2808f(662) 236-3401
 Courthouse 3rd Floor
 Ct. Admin. Sue Blankenship..... P.O. Box 466, Okolona 38860(662) 447-5454f(662) 447-3332
 Staff Atty Mary Ann Percy..... 1 Courthouse Sq., Ste. 101, Oxford 38655 .(662) 234-3013.....f(662) 236-3401

Judge..... J. Kelly Luther102 N Main St., Ste. F, Ripley 38663 .(662) 837-7884....f(662) 837-7513
 Ct. Rept. Christy L. Adair P.O. Box 504, New Albany 38652.....(662) 316-4242f(662) 534-6215
 Ct. Rept. Anita G. Moss P.O. Box 47, Houston 38851(662) 456-5464No Fax
 Ct. Rept. Dana Rakestraw..... P.O. Box 982, New Albany 38652..... (662) 317-1565No Fax
 Ct. Rept. Margaret B. Fair Lafayette County, Oxford 38655.....(662) 236-2808f(662) 236-3401
 Courthouse 3rd Floor
 Ct. Admn..... Kathy Sturdivant 102 N. Main St., Ste. F, Ripley 38663 ..(662) 837-7884f(662) 837-7513
 Staff Atty Mary Ann Percy..... 1 Courthouse Sq., Ste. 101, Oxford 38655 .(662) 234-3013.....f(662) 236-3401

4TH CIRCUIT DISTRICT

Leflore, Sunflower, & Washington Counties

Judge..... Carol White-Richard ..P.O. Box 686, Indianola 38751..... (662) 445-1996 f(662) 887-5656
 Ct. Rept. Shauna W. Stanford..... P.O. Box 686, Indianola 38751(662) 445-1996f(662) 887-5656
 Ct. Admn..... Netty R. Seard..... P.O. Box 686, Indianola 38751(662) 445-1996f(662) 887-5656
 Law Clerk..... Amanda Hargrove P.O. Box 686, Indianola 38751(662) 445-1996f(662) 887-5656

Judge..... Richard A. SmithP.O. Box 10239, Greenwood 38930..... (662) 453-1429 f(662) 455-9056
 Ct. Rept. Kathy Kearney P.O. Box 10239, Greenwood 38930(662) 453-1429f(662) 455-9056
 Ct. Admn..... Ann Banks..... P.O. Box 10239, Greenwood 38930(662) 453-1429f(662) 455-9056
 Staff Atty Alison Pittman..... P.O. Box 10239 . Greenwood 38930 ... (662) 453-1429f(662) 455-9056

Judge..... Margaret Carey-McCray.P.O. Box 1775, Greenville 38702-1775...(662) 334-2797.....f(662) 334-2716
 Ct. Rept.....Leigh Gray.....P.O. Box 1775, Greenville 38702-1775 .(662) 334-2797..... f(662) 334-2716
 Ct. Admn.Angela Howard.....P.O. Box 1775, Greenville 38702-1775 (662) 334-2797.... f(662) 334-2716
 Lgl Rsch. Asst.....LaShonda CampbellP.O. Box 1775, Greenville 38702-1775 (662) 334-2797.... f(662) 334-2716

Judge W. Ashley Hines.....P.O. Box 1315, Greenville 38702-1315..(662) 334-2652.... f(662) 335-2381
 Ct. Rept.....Vickie T. Cawthon.....P.O. Box 1315, Greenville 38702-1315 .(662) 334-2759.... f(662) 335-2381
 Ct. Admn.Sandy SandersP.O. Box 1315, Greenville 38702-1315 .(662) 334-2787.... f(662) 335-2381
 Staff Atty.....Kena Campbell.....P.O. Box 1315, Greenville 38702-1315 .(662) 334-2790.... f(662) 335-2381

5TH CIRCUIT DISTRICT

Attala, Carroll, Choctaw, Grenada, Montgomery, Webster, & Winston Counties

Judge..... George Mitchell Jr.....P.O. Drawer J, Eupora 39744(662) 258-3691 f(662) 258-6855
 Ct. Rept. Charla Boatman 2887 E. Roane Ave, Eupora 39744(662) 552-0681No Fax
 Ct. Rept. Tammy Thomas 1882 Russel Rd., Noxapater 39345(662) 724-2922f(662) 724-2922
 Ct. Admn..... Miriam Fields..... P.O. Drawer J, Eupora 39744(662) 258-3691f(662) 258-6855

Judge..... Joseph H. Loper Jr.....P.O. Box 616, Ackerman 39735.....(662) 285-3818.....f(662) 285-3160
 Ct. Rept. Noelle Skelton..... 610 Hickory Hill Road, Kosciusko 39090.(601) 562-0306.....No Fax
 Ct. Rept. Charla Boatman 2887 E. Roane Ave, Eupora 39744(662) 552-0681No Fax
 Ct. Admn..... Wesley McCulloch P.O. Box 616, Ackerman 39735(662) 285-3818f(662) 285-3160

6TH CIRCUIT DISTRICT

Adams, Amite, Franklin, & Wilkinson Counties

Judge..... Lillie Blackmon Sanders 115 South Wall St., Natchez 39121.....(601) 445-7933.... f(601) 445-2369
 Ct. Rept. Tracy Davis 115 South Wall St., Natchez 39121(601) 445-7933f(601) 445-2369
 Ct. Rept. Leah Nations..... 115 South Wall St., Natchez 39121(601) 445-7933f(601) 445-2369
 Ct. Admn..... Martha Griffin 115 South Wall St., Natchez 39121(601) 445-7933f(601) 445-2369
 Secretary III..... Takeisha Owens 115 South Wall St., Natchez 39121(601) 445-7933f(601) 445-2369
 Law Clerk II..... Claire Kenda 115 South Wall St., Natchez 39121(601) 445-7933f(601) 445-2369

Judge..... Forrest A. Johnson.....P.O. Box 1383, Natchez 39121(601) 442-8363.... f(601) 445-7954
 Ct. Rept. Melanie G. Murray..... P.O. Box 1383, Natchez 39121(601) 442-8363f(601) 445-7954
 Ct. Rept. Leah Nations P.O. Box 1383, Natchez 39121(601) 442-8363f(601) 445-7954
 Secretary..... Eileen Wickham P.O. Box 1383, Natchez 39121(601) 442-8363f(601) 445-7954
 Law Clerk II..... Jeremy Diamond..... P.O. Box 1383, Natchez 39121(601) 442-8363f(601) 445-7954

7TH CIRCUIT DISTRICT

Hinds County

Judge..... Jeff Weill Sr.....P.O. Box 22711, Jackson 39225-22711....(601) 968-6679.....f(601) 973-5541
 Ct. Rept. Tesa Barrett P.O. Box 22711, Jackson 39225-22711 ..(601) 968-6662..... f(601) 973-5541
 Ct. Rept. Lindsey McIntosh P.O. Box 22711, Jackson 39225-22711 ..(601) 968-6662..... f(601) 973-5541
 Ct. Admn. Kelli Degnan P.O. Box 22711, Jackson 39225-22711 ..(601) 968-6679..... f(601) 973-5541
 Staff Atty..... Kate Steiner P.O. Box 22711, Jackson 39225-22711 ..(601) 973-5576..... f(601) 973-5541

Judge..... Winston Kidd.....P.O. Box 327, Jackson 39205.....(601) 968-6688.... f(601) 714-6305
 Ct. Rept. Estella Wren P.O. Box 327, Jackson 39205(601) 968-6673f(601) 973-5541
 Ct. Rept. Danette Horne P.O. Box 327, Jackson 39205(601) 968-6660f(601) 973-5541
 Ct. Admn..... Evelyn Hunter..... P.O. Box 327, Jackson 39205(601) 968-6688f(601) 714-6305
 Law Clerk II..... Lenderrick Taylor P.O. Box 327, Jackson 39205(601) 973-5577f(601) 714-6305

Judge..... William A. Gowan.....P.O. Box 22711, Jackson 39225-22711 ..(601) 714-6222.... f(601) 948-2689
 Ct. Rept. Fran Askew P.O. Box 22711, Jackson 39225-22711 ..(601) 968-6680f(601) 948-2689
 Ct. Rept. Lindsey Patterson P.O. Box 22711, Jackson 39225-22711 ..(601) 968-6662f(601) 948-2689
 Ct. Admn..... Katrina Wells P.O. Box 22711, Jackson 39225-22711 ..(601) 714-6222f(601) 948-2689
 Staff Atty Anna Livingston..... P.O. Box 22711, Jackson 39225-22711 ..(601) 968-6656f(601) 948-2689

Judge..... Tomie T. GreenP.O. Box 327, Jackson 39205.....(601) 968-6658.... f(601) 714-6270
 Ct. Rept. Kimberly Smith P.O. Box 327, Jackson 39205(601) 714-6233f(601) 948-2689
 Ct. Rept. Estella Wren P.O. Box 327, Jackson 39205(601) 968-6673f(601) 948-2689
 Ct. Admn..... Frances Ashley P.O. Box 327, Jackson 39205(601) 968-6658f(601) 714-6270
 Staff Atty Kellie Grizzell..... P.O. Box 327, Jackson 39205(601) 968-6792f(601) 714-6270

8TH CIRCUIT DISTRICT

Leake, Neshoba, Newton, & Scott Counties

Judge Christopher A. Collins.. 401 E. Beacon St., Ste. 235(601) 656-7646.... f(601) 656-6730
Philadelphia 39350
 Ct. Rept. Jennifer Seward 791 Richland Dr., Richland 39218(601) 720-0462f(601) 656-6730
 Ct. Rept. Rita Brown 150 Love Rd., Kosciusko 39090(662) 750-9311f(601) 656-6730
 D. Ct. Admn. Janis Watts 401 E. Beacon St., Ste. 235(601) 656-7646f(601) 656-6730
 Philadelphia 39350
 Staff Atty Brian Burns 401 E. Beacon St., Ste. 235.....(601) 656-7646f(601) 656-6730
 Philadelphia 39350

Judge Vernon R. Cotten.....205 W. Main Street, Carthage 39051(601) 267-5615f(601) 267-5616
 Ct. Rept. Rita Brown 150 Love Rd., Kosciusko 39090.....(662) 750-9311f(601) 656-6730
 Ct. Admn. Lindsey S. Lickness.....205 W. Main Street, Carthage 39051(601) 267-5615.....f(601) 267-5616

9TH CIRCUIT DISTRICT*Issaquena, Sharkey, & Warren Counties*

Judge..... M. James Chaney Jr.....P.O. Box 351, Vicksburg 39181..... (601) 638-8981 ... f(601) 630-8033
 Ct. Rept. Lucretia Smith P.O. Box 351, Vicksburg 39181 (601) 638-8981f(601) 630-8033
 Ct. Rept. LaLisa Lindeman P.O. Box 351, Vicksburg 39181 (601) 638-8981f(601) 630-8033
 Ct. Admn..... Lee Ann Stuart..... P.O. Box 351, Vicksburg 39181 (601) 638-8981f(601) 630-8033
 Staff Atty Le Brown..... P.O. Box 351, Vicksburg 39181..... (601) 638-8981f(601) 630-8033

Judge..... Isadore Patrick.....P.O. Box 351, Vicksburg 39181..... (601) 634-8042..... f(601) 634-8049
 Ct. Rept. Kristy V. Johnson P.O. Box 351, Vicksburg 39181..... (601) 634-8042f(601) 634-8049
 Ct. Rept. Helen Martin..... P.O. Box 351, Vicksburg 39181..... (601) 634-8042f(601) 634-8049
 Ct. Admn..... Melanie Sanders..... P.O. Box 351, Vicksburg 39181..... (601) 634-8042f(601) 634-8049
 Lgl. Rsch. Asst. .. Rufus Taylor P.O. Box 351, Vicksburg 39181..... (601) 634-8042f(601) 634-8049
 Law Lgl. Asst. Bethany Bridges..... P.O. Box 351, Vicksburg 39181..... (601) 634-8042f(601) 634-8049

10TH CIRCUIT DISTRICT*Clarke, Kemper, Lauderdale, & Wayne Counties*

Judge..... Lester F. Williamson Jr. P.O. Box 86, Meridian 39302..... (601) 482-9741.... f(601) 486-4933
 Ct. Rept. Ruth Ann Patrick 500 Constitution Ave., Meridian 39301 ..(601) 482-9783f(601) 486-4933
 Ct. Rept. Starr Griffin P.O. Box 3751, Meridian 39303 (601) 482-9783f(601) 484-3970
 Ct. Admn..... Dana D. Wedgworth..... P.O. Box 1262, Meridian 39302 (601) 482-9741f(601) 486-4933
 Staff Atty Kate Schneller..... P.O. Box 1262, Meridian 39302 (601) 482-8761f(601) 486-4933

Judge..... Justin M. CobbP.O. Box 5631, Meridian 39302 (601) 482-9741.... f(601) 486-4933
 Ct. Rept. Patricia McMillan..... 60 Dry Creek Pl., Meridian 39301 (601) 482-9783f(601) 484-3970
 Ct. Rept. Ruth Ann Patrick 500 Constitution Ave., Meridian 39301 ..(601) 482-9783f(601) 486-4933
 Ct. Admn..... Dana D. Wedgworth..... P.O. Box 1262, Meridian 39302 (601) 482-9741f(601) 486-4933
 Staff Atty Karen Todd..... P.O. Box 1262, Meridian 39302 (601) 482-4922f(601) 486-4933

11TH CIRCUIT DISTRICT*Bolivar, Coahoma, Quitman, & Tunica Counties*

Judge Charles E. Webster P.O. Drawer 998, Clarksdale 38614-0998..(662) 624-3017f(662) 624-2515
 Ct. Rept. Mary Dillel P.O. Drawer 998, Clarksdale 38614-0998. (662) 624-3039f(662) 624-2515
 Ct. Rept..... VACANT P.O. Drawer 998, Clarksdale 38614-0998..(662) 624-3039f(662) 624-2515
 D. Ct. Admn. Teresa Ragland P.O. Drawer 998, Clarksdale 38614-0998..(662) 624-3039f(662) 624-2515
 Staff Atty..... Donald W. Cumbest II..... P.O. Drawer 998, Clarksdale 38614-0998. (662) 624-3017f(662) 624-2515

Judge Albert B. Smith III P.O. Drawer 478, Cleveland 38732..... (662) 843-3346.....f(662) 846-2930
 Ct. Rept. Meschelle Baker P.O. Drawer 478, Cleveland 38732 (662) 843-3346....f(662) 846-2930
 Ct. Admn. Rebecca Dean P.O. Drawer 478, Cleveland 38732 (662) 843-3346....f(662) 846-2930
 Law Clerk Lance Martin..... P.O. Drawer 478, Cleveland 38732 (662) 843-3346....f(662) 846-2930

Judge Linda F. Coleman..... P.O. Drawer 548, Cleveland 38732 (662) 846-2939..... f(662) 846-2937
 D. Ct. Admn. Theresa J. Thigpen..... P.O. Drawer 548, Cleveland 38732 (662) 846-2939....f(662) 846-2937
 Ct. Rept. Daphene Boykin P.O. Drawer 548, Cleveland 38732 (662) 846-2939....f(662) 846-2937
 Staff Atty Jamal W. Perkins..... P.O. Drawer 548, Cleveland 38732 (662) 846-2939....f(662) 846-2937

12TH CIRCUIT DISTRICT*Forrest & Perry Counties*

Judge..... Robert B. Helfrich.....P.O. Box 309, Hattiesburg 39403 (601) 544-5495f(601) 545-6179
 Ct. Rept. Beverly Temple..... P.O. Box 309, Hattiesburg 39403 (601) 544-5495f(601) 545-6179
 Ct. Admn..... Jerra Runnels P.O. Box 309, Hattiesburg 39403 (601) 544-5495f(601) 545-6179
 Law Clerk..... Sandra Mohler P.O. Box 309, Hattiesburg 39403 (601) 544-5495f(601) 545-6179
 Rsch. Asst..... Clarissa Kelly..... P.O. Box 309, Hattiesburg 39043 (601) 544-5495f(601) 545-6179

Judge..... Jon Mark Weathers.....P.O. Box 830, Hattiesburg 39403(601) 544-5495 f(601) 544-8255
 Ct. Rept. Nancy Farris..... P.O. Box 830, Hattiesburg 39403 (601) 544-5495f(601) 544-8255
 Ct. Admn..... Melba Chauvin P.O. Box 830, Hattiesburg 39403 (601) 544-5495f(601) 544-8255
 Staff Atty Beth Windham P.O. Box 830, Hattiesburg 39403 (601) 544-5495f(601) 544-8255

13TH CIRCUIT DISTRICT

Covington, Jasper, Simpson, & Smith Counties

Judge..... Eddie H. Bowen.....P.O. Box 545, Raleigh 39153 (601) 782-4413 f(601) 782-4630
 Ct. Rept. Rosie Scott..... 6273 Hwy. 35, Mt. Olive 39119 (601) 466-3446 f(601) 782-4630
 Ct. Admn..... Judy Herrington..... P.O. Box 545, Raleigh 39153 (601) 782-4413 f(601) 782-4630
 Staff Atty Ray Therrell..... P.O. Box 216, Mendenhall 39114..... f(601) 782-4630

Judge..... Stanley Sorey P.O. Box 861, Raleigh 39153..... (601) 782-9999 No Fax
 Ct. Rept. Kimberly Ulmer..... P.O. Box 126, Raleigh 39153 (601) 782-9999 f(601) 782-9004
 Ct. Admn..... Amber Godbey..... P.O. Box 8621, Raleigh 39153..... (601) 782-9999 f(601) 782-9004
 Staff Atty Ray Therrell..... P.O. Box 216, Mendenhall 39114..... f(601) 782-9004

14TH CIRCUIT DISTRICT

Lincoln, Pike, & Walthall Counties

Judge..... Michael M. Taylor.....P.O. Drawer 1350, Brookhaven 39602. (601) 835-1576..... f(601) 835-5644
 Ct. Rept. Deborah Lang P.O. Drawer 1350, Brookhaven 39602.. (601) 835-4368..... f(601) 835-5644
 Ct. Rept. Ola Berry..... P.O. Drawer 1350, Brookhaven 39602.. (601) 835-1576..... f(601) 835-5644
 Ct. Admn. Laurie Chassion P.O. Drawer 1350, Brookhaven 39602 . (601) 835-1576..... f(601) 835-5644
 Staff Atty Andrea Sanders..... P.O. Drawer 1350, Brookhaven 39602 . (601) 835-1576..... f(601) 835-5644

Judge..... David H. Strong Jr.P.O. Box 1387, McComb 39649 (601) 684-3400..... f(601) 684-2700
 Ct. Rept. Ola Berry P.O. Drawer 1350, Brookhaven 39602 .. (601) 835-1576 f(601) 835-5644
 Ct. Rept. Susan Smith..... P.O. Box 412, McComb 39649 (601) 684-3400 f(601) 684-2700
 Ct. Admn..... Vicki Brill P.O. Drawer 1350, Brookhaven 39602 .. (601) 835-1576 f(601) 835-5644
 Staff Atty Andrea Sanders..... P.O. Drawer 1350, Brookhaven 39602.. (601) 835-1576 f(601) 835-5644

15TH CIRCUIT DISTRICT

Jefferson Davis, Lamar, Lawrence, Marion, & Pearl River Counties

Judge..... Anthony A. Mozingo.....P.O. Drawer 269, Purvis 39475 (601) 794-6035 f(601) 794-3547
 Ct. Rept. Ella Hardwick..... 110 Montgomery Rd., Richland 39218 . (601) 951-9510 f(601) 794-3547
 Ct. Admn..... Jennifer Beightol..... P.O. Box 269, Purvis 39475 (601) 794-3418 f(601) 794-3547
 Staff Atty Tim Evans..... P.O. Box 269, Purvis 39475 (601) 794-3483 f(601) 794-3547

Judge..... Prentiss Harrell P.O. Box 488, Purvis 39475 (601) 794-6035 f(601) 794-2801
 Ct. Rept. Kimme Roberts..... 28 Mickell Dr., Columbia 39429 (601) 441-0925 f(601) 794-2801
 Ct. Admn..... Laurel Brinkley P.O. Box 488, Purvis 39475 (601) 794-3482 f(601) 794-2801
 Staff Atty Matthew O'Quain..... P.O. Box 488, Purvis 39475 (601) 794-3484 f(601) 794-2801

Judge..... Claiborne McDonaldP.O. Box 590, Poplarville 39470 (601) 403-2360 f(601) 403-2363
 Ct. Rept. Rhonda Wetzel P.O. Box 590, Poplarville 39470..... (601) 403-2360 f(601) 403-2363
 Ct. Admin Jody Stuart..... P.O. Box 590, Poplarville 39470..... (601) 403-2360 f(601) 403-2363
 Staff Atty Scarlett Jones..... P.O. Box 590, Poplarville 39470..... (601) 403-2360 f(601) 403-2363

16TH CIRCUIT DISTRICT

Clay, Oktibbeha, Lowndes, & Noxubee Counties

Judge..... Lee J. Howard P.O. Box 1679, Starkville 39760 (662) 323-6765 f(662) 323-1121
 Ct. Rept. Cynthia Zelinka 1485 Loblolly, Starkville 39759 (662) 615-6084 No Fax
 Ct. Admn..... Carrie Kimbrough..... P.O. Box 1679, Starkville 39760..... (662) 323-6765 f(662) 323-1121
 Law Clerk II..... Amanda Sturniolo P.O. Box 1679, Starkville 39760..... (662) 323-6765 f(662) 323-1121

Judge..... James T. Kitchens Jr.....P.O. Box 1387, Columbus 39703 (662) 329-5919 f(662) 245-4632
 Ct. Rept. Nikki Clark..... 60371 Smithville Rd., Smithville 38870. (662) 871-9055 No Fax
 Ct. Admn..... Lynn Conner..... P.O. Box 1387, Columbus 39703 (662) 329-5919 f(662) 245-4632
 Law Clerk II..... Amanda Sturniolo P.O. Box 1679, Starkville 39760..... (662) 323-6765 f(662) 323-1121

Judge Lee S. Coleman..... P.O. Drawer 1033, West Point 39773. (662) 494-4893..... f(662) 494-0195
 Ct. Rept. Melanie Morel P.O. Box 8274, Columbus 39705 (662) 356-4822 No Fax
 Law Clerk II..... Amanda Sturniolo P.O. Box 1679, Starkville 39760..... (662) 323-6765 f(662) 323-1121
 Ct. Admn. April Edwards P.O. Drawer 1033, West Point 39773 .. (662) 494-4893..... f(662) 494-0195

17TH CIRCUIT DISTRICT*DeSoto, Panola, Tallahatchie, Tate, & Yalobusha Counties*

Judge..... Celeste Embrey Wilson..P.O. Box 280, Hernando 38632.....(662) 469-8359f(662) 469-8370
 Ct. Rept. Ginger Harrell..... 2535 Hwy. 51 S., Hernando 38632.....(901) 489-4496f(662) 469-8370
 Ct. Rept. Michelle Haberstroh..... 2535 Hwy. 51 S., Hernando 38632.....(901) 338-6396f(662) 469-8370
 Ct. Admn..... Sally Williams..... 2535 Hwy. 51 S., Hernando 38632.....(662) 469-8359f(662) 469-8370
 Staff Atty Marybeth Bolen 202 French's Alley, Senatobia 38668 ... (662) 560-6201f(662) 560-6201
 Staff Atty Jamie Heard-Smith..... 202 French's Alley, Senatobia 38668 ... (662) 560-6201f(662) 560-6201

Judge..... Smith Murphey202 French's Alley, Senatobia 38668 (662) 560-6201.... f(662) 560-6201
 Ct. Rept. Sheila McKinney 202 French's Alley, Senatobia 38668 ... (662) 560-6201f(662) 560-6201
 Ct. Rept. Kathy Sanford..... 202 French's Alley, Senatobia 38668 ... (662) 560-6201f(662) 560-6201
 Staff Atty Marybeth Bolen 202 French's Alley, Senatobia 38668 ... (662) 560-6201f(662) 560-6201
 Ct. Admn Elizabeth Lentz 202 French's Alley, Senatobia 38668 ... (662) 560-6201f(662) 560-6201
 Staff Atty Jamie Heard-Smith..... 202 French's Alley, Senatobia 38668 ... (662) 560-6201f(662) 560-6201

Judge..... James McClure IIIP.O. Box 246, Sardis 38666.....(662) 487-2072....f(662) 487-3830
 Ct. Rept. Julie Mims 215 S. Pocahontas St., Sardis 38666 (662) 487-2072f(662) 487-3830
 Ct. Admn..... Tracie Estridge..... 215 S. Pocahontas St., Sardis 38666 (662) 487-2072f(662) 487-3830
 Staff Atty Marybeth Bolen 202 French's Alley, Senatobia 38668 ... (662) 560-6201f(662) 560-6201
 Staff Atty Jamie Heard-Smith..... 202 French's Alley, Senatobia 38668 ... (662) 560-6201f(662) 560-6201
 Ct. Rept. Sheila McKinney 202 French's Alley, Senatobia 38668 ... (662) 560-6201f(662) 560-6201

Judge..... Gerald Chatham.....P.O. Box 527, Hernando 38632.....(662) 469-8314....f(662) 469-8313
 Ct. Admn..... Suzanne Lowrie P.O. Box 527, Hernando 38632..... (662) 469-8314f(662) 469-8313
 Ct. Rept. Stacy S. Climer..... 205 Country Club Dr., Senatobia 38668(662) 934-2609f(662) 469-8313
 Ct. Rept. Ginger Harrell..... 2535 Hwy. 51 S., Hernando 38632.....(901) 489-4496f(662) 469-8313
 Staff Atty Marybeth Bolen 202 French's Alley, Senatobia 38668 ... (662) 560-6201f(662) 560-6201
 Staff Atty Jamie Heard-Smith..... 202 French's Alley, Senatobia 38668 ... (662) 560-6201f(662) 560-6201

18TH CIRCUIT DISTRICT*Jones County*

Judge..... Dal WilliamsonP.O. Box 65, Laurel 39441.....(601) 428-4572f(601) 428-3189
 Ct. Rept. Elizabeth Barlow..... P.O. Box 65, Laurel 39441 (601) 426-2054f(601) 428-3189
 Ct. Admn..... Deborah Wade P.O. Box 65, Laurel 39441 (601) 422-4228f(601) 428-3189
 Law Clerk..... Andrea Boyles..... P.O. Box 65, Laurel 39441 (601) 428-3196f(601) 428-3189
 Paralegal Rachel Stanley..... P.O. Box 65, Laurel 39441 (601) 428-4572f(601) 428-3189

19TH CIRCUIT DISTRICT*George, Greene, & Jackson Counties*

Judge..... Robert P. Krebs.....P.O. Box 998, Pascagoula 39568.....(228) 769-3438....f(228) 769-3262
 Ct. Rept. Edie Phillips..... P.O. Box 998, Pascagoula 39568 (228) 769-3041f(228) 769-3262
 Ct. Admn..... Bobby Schillereff..... P.O. Box 998, Pascagoula 39568..... (228) 769-3438f(228) 769-3262
 Law Clerk..... Thomas E. Laws P.O. Box 998, Pascagoula 39568..... (228) 769-3408f(228) 769-3262
 Law Clerk..... Anna Hall P.O. Box 998, Pascagoula 39568..... (228) 769-3209f(228) 769-3262

Judge..... Dale HarkeyP.O. Box 998, Pascagoula 39568..... (228) 769-3434f(228) 769-3262
 Ct. Rept. Kathy Parker P.O. Box 998, Pascagoula 39568 (228) 769-3042f(228) 769-3262
 Ct. Admn..... Patricia Smith..... P.O. Box 998, Pascagoula 39568 (228) 769-3434f(228) 769-3262
 Law Clerk..... Thomas E. Laws P.O. Box 998, Pascagoula 39568..... (228) 769-3408f(228) 769-3262
 Law Clerk..... Anna Hall P.O. Box 998, Pascagoula 39568..... (228) 769-3209f(228) 769-3262

Judge..... Kathy King Jackson.....P.O. Box 998, Pascagoula 39568..... (228) 769-3244f(228) 769-3262
 Ct. Rept. Joy Zerfoss..... P.O. Box 998, Pascagoula 39568 (228) 769-3043f(228) 769-3262
 Ct. Admn..... Pamela Gephart P.O. Box 998, Pascagoula 39568 (228) 769-3244f(228) 769-3262
 Law Clerk..... Thomas E. Laws P.O. Box 998, Pascagoula 39568..... (228) 769-3408f(228) 769-3262
 Law Clerk..... Anna Hall P.O. Box 998, Pascagoula 39568..... (228) 769-3209f(228) 769-3262

20TH CIRCUIT DISTRICT

Rankin & Madison Counties

Judge..... William E. Chapman III P.O. Box 1626, Canton 39046(601) 855-5555 ... f(601) 855-5704
 Ct. Rept. Candice S. Crane..... P.O. Box 1626, Canton 39046 (601) 855-5555f(601) 855-5704
 D. Ct. Admn. Patricia Green P.O. Box 1626, Canton 39046(601) 855-5555f(601) 855-5704
 Law Clerk..... Jessica Carr P.O. Box 1626, Canton 39046(601) 855-5555f(601) 855-5704

Judge..... John H. EmfingerP.O. Box 1689, Brandon 39043.....(601) 824-2427 f(601) 824-2441
 Ct. Rept. Harvey Rayborn..... P.O. Box 1689, Brandon 39043 (601) 824-2427f(601) 824-2441
 D. Ct. Admn. Tammy Hall P.O. Box 1689, Brandon 39043(601) 824-2427f(601) 824-2441

Judge..... Steve Ratcliff.....P.O. Box 1626, Canton 39046 (601) 855-5570 f(601) 855-5704
 Ct. Rept. Debbie Nesper..... P.O. Box 1626, Canton 39046(601) 855-5570f(601) 855-5704
 Ct. Admn..... Natalie Kirby P.O. Box 1626, Canton 39046(601) 855-5770f(601) 855-5704
 Law Clerk..... Jessica Carr P.O. Box 1626, Canton 39046(601) 855-5586f(601) 855-5704

21ST CIRCUIT DISTRICT

Holmes, Humphreys, & Yazoo Counties

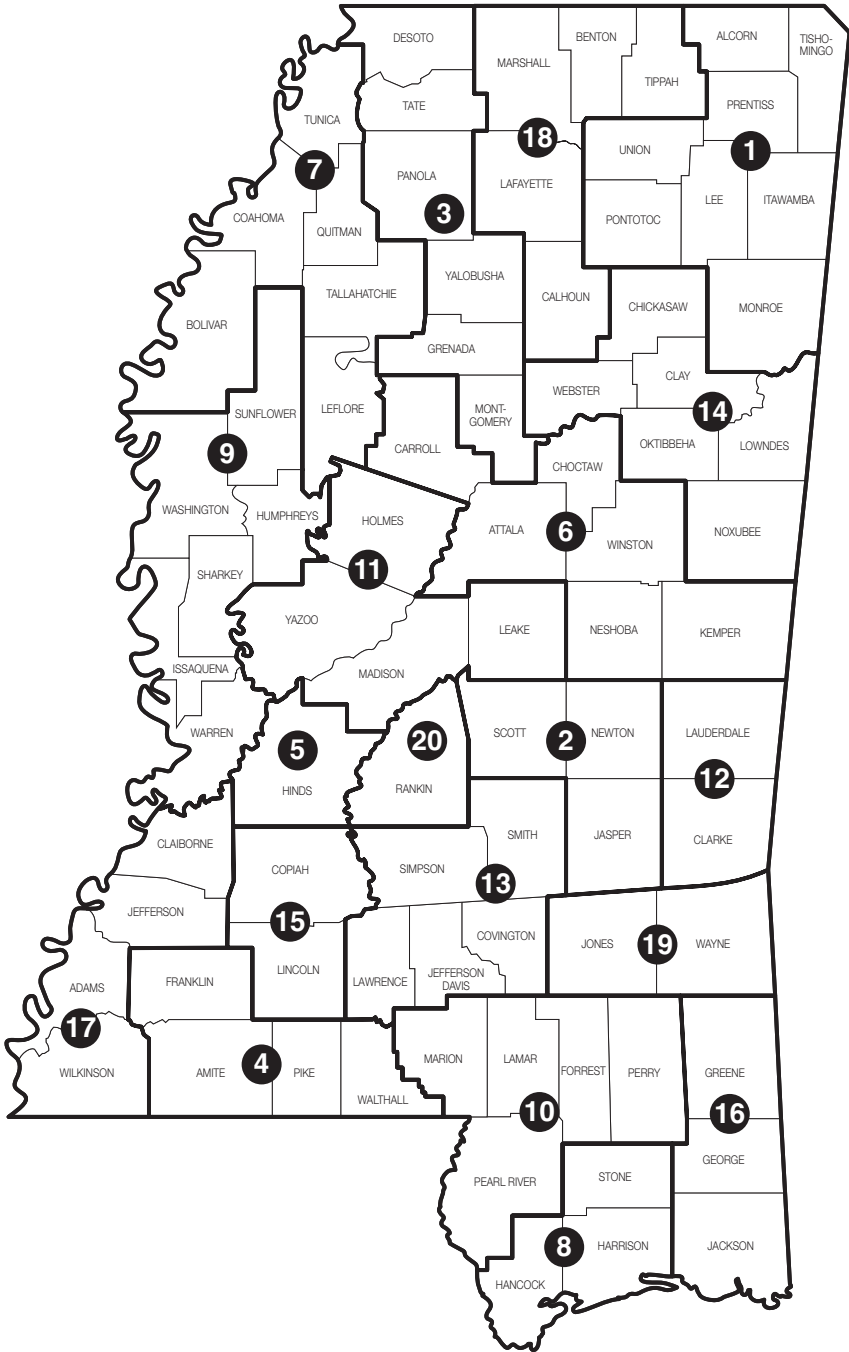
Judge..... Jannie M. Lewis-Blackmon...P.O. Box 149, Lexington 39095... (662) 834-1452f(662) 834-1481
 Ct. Rept. Victoria Reeves..... P.O. Box 149, Lexington 39095 (662) 834-1452f(662) 834-1481
 Ct. Rept. Patrick Wallace..... P.O. Box 149, Lexington 39095(662) 834-1452f(662) 834-1481
 Ct. Admn..... Modora A. Gordon..... P.O. Box 149, Lexington 39095(662) 834-1452f(662) 834-1481
 Law Clerk I Donovan Mitchell P.O. Box 149, Lexington 39095(662) 834-1452f(662) 834-1481

22ND CIRCUIT DISTRICT

Copiah, Claiborne, & Jefferson Counties

Judge..... Lamar Pickard.....P.O. Box 310, Hazlehurst 39083.....(601) 894-3311 ... f(601) 894-3315
 Ct. Rept. Theresa Lumley P.O. Box 310, Hazlehurst 39083.....(601) 894-3311f(601) 894-3315
 Ct. Admn. Sherry Moss Shannon..... P.O. Box 310, Hazlehurst 39083.....(601) 894-3311f(601) 894-3315
 Law Clerk..... Sarah Moulder P.O. Box 310, Hazlehurst 39083.....(601) 894-3311f(601) 894-3315

CHANCERY COURT DISTRICTS



CHANCERY COURT JUDGES

Chancery Courts have jurisdiction over disputes in matters involving equity; domestic matters including adoptions, custody disputes, and divorces; guardianships; sanity hearings; wills; and challenges to constitutionality of state laws. Land records are filed in Chancery Court.

Chancery Courts have jurisdiction over juvenile matters in counties which have no County Court. The chancellor may appoint a lawyer in private practice to sit as a youth court referee to hear juvenile matters such as delinquency, abuse, and neglect.

Trials are typically heard by a chancellor without a jury, although state law allows parties to request a jury in Chancery Court.

There are 20 Chancery Court districts and 52 Chancery Court judges. The number of chancery judges per district ranges from one to four. Chancery Court judges are selected in non-partisan elections to serve four-year terms.

1ST CHANCERY DISTRICT

Alcorn, Tishomingo, Prentiss, Pontotoc, Lee, Itawamba, Monroe, & Union Counties

Judge.....Jacqueline MaskP.O. Box 7395, Tupelo 38802.....(662) 432-2130f(662) 680-6057
 Ct. Rept.Ramona Roberts..... P.O. Box 7094, Tupelo 38802(662) 322-0503No Fax
 Ct. Rept.Amy Williams 5195 Water Ridge Dr., Tupelo 38801..(662) 790-3030No Fax
 Ct. Admn.Beth Burnett McNutt.... P.O. Box 7395, Tupelo 38802(662) 432-2130f(662) 680-6057
 D. Ct. Admn.Kimela Bratton P.O. Box 7395, Tupelo 38802(662) 432-2130f(662) 680-6057
 Staff AttyJerry Tidwell..... P.O. Box 26, New Albany 38652.....(662) 534-1900f(662) 534-1907
 Law Clerk.....Anna Miller P.O. Box 7395, Tupelo 38802(662) 844-8036f(662) 844-9920

Judge.....Michael Malski.....P.O. Box 543, Amory 38821.....(662) 305-3204f(662) 256-1191
 Ct. Rept.Melody Powell..... P.O. Box 367, Mantachie 38855.....(662) 397-4716No Fax
 Ct. Rept.Ramona Roberts..... P.O. Box 7094, Tupelo 38802(662) 322-0503No Fax
 Ct. Admn.Beth Burnett McNutt.... P.O. Box 7395, Tupelo 38802(662) 432-2130f(662) 680-6057
 D. Ct. Admn.Kimela Bratton P.O. Box 7395, Tupelo 38802(662) 432-2130f(662) 680-6057
 Asst. Ct. Admn. Sandra Pritchard..... P.O. Box 543, Amory 38821.....(662) 305-3204f(662) 256-1191
 Staff AttyJerry Tidwell..... P.O. Box 26, New Albany 38652.....(662) 534-1900f(662) 534-1907
 Law Clerk.....Anna Miller P.O. Box 7395, Tupelo 38802(662) 844-8036f(662) 844-9920

Judge.....T.K. Moffett.....P.O. Box 7395, Tupelo 38802.....(662) 432-2130f(662) 680-6057
 Ct. Rept.Kim Van..... P.O. Box 292, New Albany 38652.....(662) 316-9587No Fax
 Ct. Rept.Ramona Roberts..... P.O. Box 7094, Tupelo 38802(662) 322-0503No Fax
 Ct. Admn.Beth Burnett McNutt.... P.O. Box 7395, Tupelo 38802(662) 432-2130f(662) 680-6057
 D. Ct. Admn.Kimela Bratton P.O. Box 7395, Tupelo 38802(662) 432-2130f(662) 680-6057
 Staff AttyJerry Tidwell..... P.O. Box 26, New Albany 38652.....(662) 534-1900f(662) 534-1907
 Law Clerk.....Anna Miller P.O. Box 7395, Tupelo 38802(662) 844-8036f(662) 844-9920

Judge.....John A. HatcherP.O. Box 118, Booneville 38829(662) 728-2366f(662) 728-9303
 Ct. Admn.Beth Burnett McNutt.... P.O. Box 7395, Tupelo 38802(662) 432-2130f(662) 680-6057
 D. Ct. Admn.Kimela Bratton P.O. Box 7395, Tupelo 38802(662) 432-2130f(662) 680-6057
 Staff AttyJerry Tidwell..... P.O. Box 26, New Albany 38652.....(662) 534-1900f(662) 534-1907
 Ct. Rept.Pam Bell Dallas..... 111 W. Oxford St., Pontotoc 38863.....(662) 419-3666No Fax
 Ct. Rept.Ramona Roberts..... P.O. Box 7094, Tupelo 38802(662) 322-0503No Fax
 D. Ct. Admn.Ann Ryan P.O. Box 118, Booneville 38829.....(662) 728-2366f(662) 728-9303
 Law Clerk.....Anna Miller P.O. Box 7395, Tupelo 38802(662) 844-8036f(662) 844-9920

2ND CHANCERY DISTRICT

Scott, Newton, & Jasper Counties

Judge.....H. David Clark II.....P.O. Box 434, Forest 39074(601) 469-2447 f(601) 469-3116
 Ct. Rept.Melissa L. Magee..... P.O. Box 433, Mt. Olive 39119(601) 201-4201f(601) 469-3116
 Ct. Admn.Carolyn Cooper..... P.O. Box 434, Forest 39074.....(601) 469-2447f(601) 469-3116

3RD CHANCERY DISTRICT

DeSoto, Tate, Panola, Yalobusha, Grenada, & Montgomery Counties

Judge.....Mitchell M. Lundy Jr. P.O. Drawer 471, Grenada 38902..... (662) 226-1343 f(662) 226-4299
 Ct. Rept.Kimberly Land..... P.O. Drawer 471, Grenada 38902..... (662) 226-1343f(662) 226-4299
 Ct. Admn.Melanie Wells..... P.O. Drawer 471, Grenada 38902.....(662) 226-1343f(662) 226-4299

Judge.....Percy L. Lynchard Jr. ...P.O. Box 340, Hernando 38632(662) 469-8374f(662) 429-1395
 Ct. Rept.Kim Pointer P.O. Box 340, Hernando 38632.....(662) 469-8374f(662) 429-1395
 Ct. Admn.....Linda Stinson..... P.O. Box 340, Hernando 38632(662) 469-8374f(662) 429-1395
 Law Clerk.....Cole Massie..... P.O. Box 340, Hernando 38632(662) 469-8374f(662) 429-1395

Judge.....Vicki B. Daniels.....P.O. Box 1104, Batesville 38606 (662) 563-8715 No Fax
 Ct. Rept.Amanda F. Kisor 1141 State Rd. 355, Etta 38627(662) 563-8715No Fax
 Ct. Admn.....Debra T. Simmons P.O. Box 1104, Batesville 38606(662) 563-8715No Fax
 Law Clerk IBailey Peters..... P.O. Box 1104, Batesville 38606(662) 563-8715No Fax

4TH CHANCERY DISTRICT

Franklin, Amite, Pike, & Walthall Counties

Judge.....Debra K. Halford.....P.O. Box 575, Meadville 39653..... (601) 384-3833 f(601) 384-4349
 Ct. Rept.Peggy Stricklin..... P.O. Box 1151, Natchez 39121(601) 446-8072f(601) 384-4349
 Ct. Admn.....Stacye Campbell P.O. Box 575, Meadville 39653(601) 384-3833f(601) 384-4349
 Staff Attorney...Amy Ryan P.O. Box 524, Liberty 39645(601) 657-8388f(601) 657-8688

Judge.....Wayne Smith.....P.O. Box 524, Liberty 39645..... (601) 657-8588 f(601) 657-8688
 Ct. Rept.Maury Parker..... 446 Lemon B Rd, Slaughter, LA 70777. (225) 937-9834f(601) 657-8688
 D. Ct. Admn.Mary Whittington P.O. Box 524, Liberty 39645(601) 657-8588f(601) 657-8688
 Staff Attorney...Amy Ryan P.O. Box 524, Liberty 39645(601) 657-8588f(601) 657-8688

5TH CHANCERY DISTRICT

Hinds County

Judge.....Denise Owens.....P.O. Box 686, Jackson 39205.....(601) 968-6545 f(601) 949-2602
 Ct. Rept.Vanessa Addison P.O. Box 686, Jackson 39205.....(601) 968-6554f(601) 949-2602
 Law Clerk.....LaJuanda W. Griffin P.O. Box 686, Jackson 39205.....(601) 973-5569f(601) 949-2602
 Law Clerk.....VACANT..... P.O. Box 686, Jackson 39205.....(601) 973-5573f(601) 949-2602
 Ct. Admn.....Tonya Anderson P.O. Box 686, Jackson 39205(601) 714-6309f(601) 973-5587
 Ct. Admn.....Quentin Wallace. P.O. Box 686, Jackson 39205.....(601) 968-6546f(601) 949-2602

Judge.....Patricia D. Wise.....P.O. Box 686, Jackson 39205..... (601) 968-6549 f(601) 949-2602
 Ct. Rept.Debra Williams P.O. Box 686, Jackson 39205.....(601) 968-6550f(601) 949-2602
 Law Clerk.....LaJuanda W. Griffin P.O. Box 686, Jackson 39205.....(601) 973-5569f(601) 949-2602
 Law Clerk.....VACANT P.O. Box 686, Jackson 39205.....(601) 973-5573f(601) 949-2602
 Ct. Admn.....Quentin Wallace. P.O. Box 686, Jackson 39205(601) 968-6546f(601) 949-2602
 Ct. Admn.....Cynthia Hill Acox..... P.O. Box 686, Jackson 39205(601) 968-6521f(601) 973-5587

Judge.....William H. Singletary..P.O. Box 686, Jackson 39205..... (601) 968-6547 f(601) 973-5587
 Ct. Rept.Susan Gleason P.O. Box 686, Jackson 39205.....(601) 968-6548f(601) 973-5587
 Ct. Admn.....Cynthia Hill Acox..... P.O. Box 686, Jackson 39205(601) 968-6521f(601) 973-5587
 Staff AttyRachel Bailey..... P.O. Box 686, Jackson 39205.....(601) 973-5571f(601) 973-5587

Judge.....Dewayne Thomas.....P.O. Box 686, Jackson 39205.....(601) 968-6551..... f(601) 973-5587
 Ct. Rept.Jeanine Johnson..... P.O. Box 686, Jackson 39205.....(601) 968-6552f(601) 973-5587
 Staff AttyRachel Bailey..... P.O. Box 686, Jackson 39205.....(601) 973-5571f(601) 973-5587
 Ct. Admn.....Tonya Anderson P.O. Box 686, Jackson 39205(601) 714-6309f(601) 973-5587

6TH CHANCERY DISTRICT

Attala, Carroll, Choctaw, Kemper, Neshoba, & Winston Counties

Judge.....D. Joseph KilgoreP.O. Box 1006, Philadelphia 39350 (601) 656-1881 f(601) 656-1884
 Ct. Rept.Lindsey Williams P.O. Box 1006, Philadelphia 39350.....(601) 656-1881f(601) 656-1884
 Staff AttyB. J. Morrow P.O. Box 1006, Philadelphia 39350.....(601) 656-1881f(601) 656-1884
 Ct. Admn.....Heather C. Irby..... P.O. Box 1006, Philadelphia 39350.....(601) 656-1881f(601) 656-1884

Judge.....Edward C. Fenwick.....230 W. Washington, Kosciusko 39090.(662) 289-3862.....f(662) 289-2347
 Ct. Rept.Regan Carpenter 230 W. Washington, Kosciusko 39090.(662) 416-6492f(662) 289-2347
 Staff. AttyB. J. Morrow P.O. Box 1006, Philadelphia 39350.....(601) 656-1881f(601) 656-1884
 Ct. Admn.....Debbie Jordan..... 230 W. Washington, Kosciusko 39090.(662) 289-3862f(662) 289-2347

7TH CHANCERY DISTRICT

Bolivar, Coahoma, LeFlore, Quitman, Tallahatchie, & Tunica Counties

Judge.....Jon M. BarnwellP.O. Box 1579, Greenwood 38935 (662) 453-1432 f(662) 455-7959
 Ct. Rept.Marsha DePriest..... P.O. Box 1579, Greenwood 38935(662) 453-1432f(662) 455-7959
 Law Clerk.....Kathryn Renik P.O. Box 1579, Greenwood 38935(662) 453-1432f(662) 455-7959
 D. Ct. Admn.Kathryn Renik P.O. Box 1579, Greenwood 38935(662) 453-1432f(662) 455-7959

Judge.....Catherine Farris-Carter P.O. Box 1787, Cleveland 38614(662) 843-2111 f(662) 843-3382
 Ct. Rept.Paula Spragins P.O. Box 1787, Cleveland 38614.....(662) 843-2111f(662) 843-3382
 Ct. AdmnBennie Ruth Parks P.O. Box 1787, Cleveland 38614.....(662) 843-2111f(662) 843-3382
 Law ClerkVACANT P.O. Box 1787, Cleveland 38614.....(662) 843-2111f(662) 843-3382

Judge.....W. M. Sanders.....P.O. Box 473, Greenwood 38935(662) 451-7289.....f(662) 451-7122
 Ct. Rept.Amy Taylor..... P.O. Box 473, Greenwood 38935.....(662) 455-1706f(662) 459-4133
 Ct. Admn.....Shakeba Johnson P.O. Box 473, Greenwood 38935.....(662) 451-7289f(662) 451-7122
 Staff AttyShakeba Johnson P.O. Box 473, Greenwood 38935.....(662) 451-7289f(662) 451-7122

8TH CHANCERY DISTRICT

Hancock, Harrison, & Stone Counties

Judge.....Sanford (Sandy) Steckler...P.O. Box 659, Gulfport 39502(228) 865-4008f(228) 865-1646
 Ct. Rept.Susan Bailey P.O. Box 659, Gulfport 39502(228) 865-4012f(228) 863-1646
 Ct. Admn.....Brooke Pollard..... P.O. Box 659, Gulfport 39502(228) 865-4008f(228) 865-1646
 Staff AttyTracy Morris P.O. Box 659, Gulfport 39502(228) 863-4640f(228) 863-6339

Judge.....Jim PersonsP.O. Box 457, Gulfport 39502 (228) 865-4096 f(228) 863-6339
 Ct. Rept.Judi Schultz..... P.O. Box 659, Gulfport 39502.....(228) 865-4011f(228) 863-6339
 Ct. Admn.....Joy B. Danzey..... P.O. Box 659, Gulfport 39502.....(228) 865-4096f(228) 863-6339
 Law Clerk III....Chelsea Crittenden..... P.O. Box 659, Gulfport 39502.....(228) 863-4790 f(228) 863-6339

Judge.....Jennifer SchloegelP.O. Box 986, Gulfport 39502(228) 865-4096 f(228) 863-6339
 Ct. Rept.Ann Rodgers..... 67 Baucum Rd., Carriere 39426(228) 863-7059f(228) 863-6339
 Ct. Admn.....Joy B. Danzey..... P.O. Box 659, Gulfport 39502(228) 865-4096f(228) 863-6339
 Law Clerk III....Jamie Cook..... P.O. Box 659, Gulfport 39502(228) 865-4013f(228) 863-6339

Judge.....Carter Bise.....P.O. Box 1542, Gulfport 39502(228) 865-4008f(228) 865-1646
 Ct. Rept.Tracey G. Bertrand P.O. Box 1542, Gulfport 39502.....(228) 865-1639f(228) 865-1646
 Ct. Admn.....Brooke Pollard..... P.O. Box 659, Gulfport 39502.....(228) 865-4008f(228) 865-1646
 Law Clerk III....Katherine Kingren P.O. Box 659, Gulfport 39502.....(228) 865-4096f(228) 865-1646

9TH CHANCERY DISTRICT

Humphreys, Issaquena, Sharkey, Sunflower, Warren, & Washington Counties

Judge.....Marie WilsonP.O. Box 1762, Greenville 38702(662) 334-2685 f(662) 334-2782
 Ct. Rept.Lynette W. Grimmett... P.O. Box 1762, Greenville 38702.....(662) 334-2685f(662) 334-2782
 Ct. Admn.....Itonia R. Williams..... P.O. Box 1762, Greenville 38702.....(662) 334-2685f(662) 334-2782
 Law Clerk.....Lorna Frazier..... P.O. Box 1762, Greenville 38702.....(662) 334-2685f(662) 334-2782

Judge.....Vicki R. Barnes.....P.O. Box 351, Vicksburg 39181.....(601) 636-8327 f(601) 630-8021
 Ct. Rept.Darlene Davidson..... P.O. Box 351, Vicksburg 39181(601) 636-8327f(601) 630-8021
 Ct. Rept.Harley Hollowell P.O. Box 351, Vicksburg 39181(601) 636-8327f(601) 630-8021
 Ct. Admn.....Cynthia Hunter P.O. Box 351, Vicksburg 39181(601) 636-8327f(601) 630-8021
 Law Clerk III....E. Brooke Wilson..... P.O. Box 351, Vicksburg 39181(601) 636-8327f(601) 630-8021

Judge.....Jane R. WeathersbyP.O. Box 1380, Indianola 38751(662) 887-7070 f(662) 887-7071
 Ct. Admn.....Melissa Robinson P.O. Box 1380, Indianola 38751(662) 887-7070f(662) 887-7071
 Staff Atty. VHallie Crook..... P.O. Box 1380, Indianola 38751.....(662) 887-7070f(662) 887-7071
 Ct. Rept.....Marie M. Jenkins..... P.O. Box 1380, Indianola 38751(662) 887-7070f(662) 887-7071

10TH CHANCERY DISTRICT

Forrest, Lamar, Marion, Pearl River, & Perry Counties

Judge.....Rhea H. Sheldon250 Broad St., Ste. 12, Columbia 39429.. (601) 736-2220 f(601) 736-4166
 Ct. Rept.....Mallory M. Gnade..... 250 Broad St., Ste. 12, Columbia 39429 .. (601) 736-2220.....f(601) 763-4166
 Ct. Admn.....Lisa M. Stringer..... 250 Broad St., Ste. 12, Columbia 39429 .. (601) 736-2220.....f(601) 763-4166
 ParalegalJudy Oglesby 250 Broad St., Ste. 12, Columbia 39429 .. (601) 736-2220.....f(601) 763-4166

Judge.....Johnny L. WilliamsP.O. Box 1664, Hattiesburg 39403..... (601) 545-6037 f(601) 545-6038
 Ct. Rept.Stacy Head..... 98 Woodstone Dr., Hattiesburg 39402 (601) 264-7558 f(601) 545-6038
 Ct. Admn.....Rachelle F. Steinhauer ... P.O. Box 1664, Hattiesburg 39403.....(601) 545-6037 f(601) 545-6038
 Paralegal.....Georgia Carpenter P.O. Box 1664, Hattiesburg 39403.....(601) 545-6037 f(601) 545-6038

Judge.....M. Ronald Doleac.....P.O. Box 872, Hattiesburg 39403 (601) 544-2836 f(601) 544-2839
 Ct. Rept.Lisa Ladner P.O. Box 872, Hattiesburg 39403.....(601) 916-7016 f(601) 544-2839
 Ct. Admn.....Gloria Mooror P.O. Box 872, Hattiesburg 39403.....(601) 544-2836 f(601) 544-2839
 Staff Atty.....Jennifer McGuire Rogers P.O. Box 872, Hattiesburg 39403..... (601) 544-2836..... f(601) 544-2839

Judge.....Deborah J. Gambrell ...P.O. Box 807, Hattiesburg 39403 (601) 545-6028 f(601) 545-6080
 Ct. Rept.Twila Jordan Hoover P.O. Box 922, Carriere 39426.....(504) 258-7546 f(601) 798-9842
 Ct. Admn.....Gloria N. Chestang..... P.O. Box 807, Hattiesburg 39403.....(601) 545-6028 f(601) 545-6080
 Staff Atty.....Jennifer McGuire Rogers P.O. Box 872, Hattiesburg 39403..... (601) 544-2836..... f(601) 544-2839

11TH CHANCERY DISTRICT

Holmes, Leake, Madison, & Yazoo Counties

Judge.....Robert G. Clark IIIP.O. Box 39, Lexington 39095(662) 834-1285..... f(662) 834-9688
 Ct. Rept.LaTanya Allen P.O. Box 39, Lexington 39095(662) 834-1285 f(662) 834-9688
 Ct. Admn.....Sheila Lewis P.O. Box 39, Lexington 39095(662) 834-1285 f(662) 834-9688
 Staff AttyPatricia Chatelain P.O. Box 39, Lexington 39095(662) 834-1285 f(662) 834-9688

Judge.....Cynthia BrewerP.O. Box 404, Canton 39046.....(601) 855-5512..... f(601) 859-0795
 Ct. Rept.Mary Helen Walden P.O. Box 404, Canton 39046(601) 855-5512 f(601) 859-0795
 Ct. Admn.....Regina L. Ferguson P.O. Box 404, Canton 39046(601) 855-5512 f(601) 859-0795
 Staff AttyMegan F. Mawhorter P.O. Box 404, Canton 39046(601) 855-5512 f(601) 859-0795

Judge.....James C. WalkerP.O. Box 404, Canton 39046(601) 855-5707 f(601) 859-0795
 Ct. Rept.Lucy Mitchell..... P.O. Box 404, Canton 39046(601) 855-5745 f(601) 859-0795
 Ct. Admn.....Susan Edgar P.O. Box 404, Canton 39046(601) 855-5707 f(601) 859-0795
 Staff AttyEmily Sumrall P.O. Box 404, Canton 39046(601) 855-5746 f(601) 859-0795

12TH CHANCERY DISTRICT

Clarke & Lauderdale Counties

Judge.....Lawrence (Larry) Primeaux...P.O. Box 5165, Meridian 39302... (601) 482-9729f(601) 486-4921
 Ct. Rept.Cindy James P.O. Box 5165, Meridian 39302(601) 482-9729 f(601) 486-4921
 Ct. Admn.....Tawanna Wright P.O. Box 5165, Meridian 39302(601) 482-9729 f(601) 486-4921
 Staff AttyJane Miller P.O. Box 5165, Meridian 39302.....(601) 486-4920 f(601) 486-4921

Judge.....Jerry MasonP.O. Box 5681, Meridian 39302 (601) 482-9729 f(601) 486-4921
 Ct. Rept.VACANT..... P.O. Box 5165, Meridian 39302.....(601) 482-9729 f(601) 486-4921
 Ct. Admn.....Tawanna Wright P.O. Box 5165, Meridian 39302(601) 482-9729 f(601) 486-4921
 Staff AttyJane Miller P.O. Box 5165, Meridian 39302.....(601) 486-4920 f(601) 486-4921

13TH CHANCERY DISTRICT

Covington, Jefferson Davis, Lawrence, Simpson, & Smith Counties

Judge.....David Shoemake.....P.O. Box 1678, Collins 39428 (601) 765-8284 f(601) 765-8282
 Ct. Rept.Susanne Eaton 503 Gambrell St., Taylorsville 39168 ..(601) 765-8284 f(601) 765-8282
 Ct. Rept.Debbie Williams P.O. Box 723, Taylorsville 39168.....(601) 765-8284 f(601) 765-8282
 Ct. Admn.....Donna Walker..... P.O. Box 1678, Collins 39428.....(601) 765-8284 f(601) 765-8282
 Law Clerk.....Deborah Kennedy 2540 SCR18, Mize 39116(601) 765-8284 f(601) 765-8282

Judge.....Gerald MartinP.O. Box 325, Raleigh 39153..... (601) 822-5017 f(601) 822-5027
 Ct. Rept.Susanne Eaton 503 Gambrell St., Taylorsville 39168 ..(601) 822-5017 f(601) 822-5027
 Ct. Rept.Debbie Williams P.O. Box 723, Taylorsville 39168.....(601) 822-5017 f(601) 822-5027
 Ct. Admn.....Cindy Bray P.O. Box 325, Raleigh 39153.....(601) 822-5017 f(601) 822-5027
 Law Clerk.....Deborah Kennedy 2540 SCR18, Mize 39116(601) 398-6593 f(601) 822-5027

14TH CHANCERY DISTRICT

Chickasaw, Clay, Lowndes, Noxubee, Oktibbeha, & Webster Counties

Judge.....Dorothy W. ColomP.O. Box 708, Columbus 39703.....(662) 329-5844 f(662) 241-1913
 Ct. Rept.Annette Savors P.O. Box 684, Columbus 39703(662) 329-5844 f(662) 241-1913

Ct. Admn.....Linda C. Hall..... P.O. Box 684, Columbus 39703(662) 329-5844f(662) 241-1913
 Staff AttyPatricia Rives..... P.O. Box 684, Columbus 39703(662) 329-5844f(662) 241-1913

Judge.....Kenneth M. Burns.....P.O. Drawer 110, Okolona 38860.....(662) 447-3486 f(662) 447-2512
 Ct. Rept.Leigh Pettit 442 East Madison, Houston 38851(662) 447-3486f(662) 447-2512
 D. Ct. Admn.Sandra Jackson..... P.O. Drawer 110, Okolona 38860.....(662) 447-3486f(662) 447-2512

Judge.....H. J. (Jim) Davidson Jr..P.O. Box 684, Columbus 39703.....(662) 329-5844 f(662) 241-1913
 Ct. Rept.Melissa Grimes..... P.O. Box 684, Columbus 39703(662) 329-5844f(662) 241-1913
 Ct. Admn.Linda C. Hall..... P.O. Box 684, Columbus 39703(662) 329-5844f(662) 241-1913
 Staff AttyPatricia Rives..... P.O. Box 684, Columbus 39703(662) 329-5844f(662) 241-1913

15TH CHANCERY DISTRICT

Copiah & Lincoln Counties

Judge.....Edward E. (Ed) Patten Jr....P.O. Drawer 707, Hazlehurst 39083 ..(601) 894-6196f(601) 894-6192
 Ct. Rept.Karee Mulholland P.O. Drawer 707, Hazlehurst 39083.....(601) 894-6196f(601) 894-6192
 Ct. Admn.....Bethany Lewis P.O. Drawer 707, Hazlehurst 39083.....(601) 894-6196f(601) 894-6192
 Staff AttyMichael Gleason..... P.O. Drawer 707, Hazlehurst 39083.....(601) 894-6196f(601) 894-6192

16TH CHANCERY DISTRICT

George, Greene, & Jackson Counties

Judge.....Michael FondrenP.O. Box 998, Pascagoula 39568.....(228) 769-3035 f(228) 769-3424
 Ct. Rept.Gina Thompson P.O. Box 998, Pascagoula 39568(228) 769-3465f(228) 769-3424
 Ct. Admn.....Sarah Westbrook..... P.O. Box 998, Pascagoula 39568(228) 769-3453f(228) 769-3367
 Asst. Ct. Admn. Brook Williams..... P.O. Box 998, Pascagoula 39568(228) 769-3193f(228) 769-3367
 Law Clerk III.....Clare (Alex) Lowman P.O. Box 998, Pascagoula 39568(228) 769-0474f(228) 769-3189
 Staff AttyJessica Lynn Bates P.O. Box 998, Pascagoula 39568(228) 769-0596f(228) 769-3367
 Secretary.....Kathy Parlin P.O. Box 998, Pascagoula 39568(228) 769-3035f(228) 769-3424

Judge.....Jaye A. BradleyP.O. Box 998, Pascagoula 39568.....(228) 769-3036f(228) 769-3189
 Ct. Rept.April Bordis P.O. Box 998, Pascagoula 39568(228) 769-3454f(228) 769-3400
 Ct. Admn.....Sarah Westbrook..... P.O. Box 998, Pascagoula 39568(228) 769-3453f(228) 769-3367
 Asst. Ct. Admn. Brook Williams..... P.O. Box 998, Pascagoula 39568(228) 769-3193f(228) 769-3367
 Law Clerk II.....Clare (Alex) Lowman P.O. Box 998, Pascagoula 39568(228) 769-0474f(228) 769-3189
 Law Clerk II.....Jessica Lynn Bates P.O. Box 998, Pascagoula 39568(228) 769-0596f(228) 769-3367
 Secretary.....Dawn Baxley P.O. Box 998, Pascagoula 39568(228) 769-3036f(228) 769-3189

Judge.....D. Neil Harris Sr.....P.O. Box 998, Pascagoula 39568.....(228) 769-3034 f(228) 769-3488
 Ct. Rept.Kate McLeod-Whalin ... P.O. Box 998, Pascagoula 39568(228) 769-3462f(228) 769-3488
 Ct. Admn.....Sarah Westbrook..... P.O. Box 998, Pascagoula 39568(228) 769-3453f(228) 769-3367
 Asst. Ct. Admn. Brook Williams..... P.O. Box 998, Pascagoula 39568(228) 769-3193f(228) 769-3367
 Law Clerk II.....Clare (Alex) Lowman P.O. Box 998, Pascagoula 39568(228) 769-0474f(228) 769-3189
 Law Clerk II.....Jessica Lynn Bates P.O. Box 998, Pascagoula 39568(228) 769-0596f(228) 769-3367
 Secretary.....Brandy Mills P.O. Box 998, Pascagoula 39568(228) 769-3034f(228) 769-3488

17TH CHANCERY DISTRICT

Adams, Claiborne, Jefferson, & Wilkinson Counties

Judge.....E. Vincent Davis.....P.O. Box 494, Fayette 39069.....(601) 786-6123..... f(601) 786-6130
 Ct. Rept.Amanda Vanlandingham 115 South Wall St., Natchez 39120.....(601) 442-7454f(601) 445-7973
 Ct. Rept.Vanessa Townsel..... 115 South Wall St., Natchez 39120.....(601) 442-7454f(601) 445-7973
 Ct. Admn.....Carla Allgood..... 115 South Wall St., Natchez 39120.....(601) 442-7454f(601) 445-7973
 Staff AttyBonnie Menapace..... 115 South Wall St., Natchez 39120.....(601) 442-7454f(601) 445-7973

Judge.....George Ward.....115 South Wall St., Natchez 39120.....(601) 442-7454 f(601) 445-7973
 Ct. Rept.Lucreita Smith 115 South Wall St., Natchez 39120.....(601) 442-7454f(601) 445-7973
 Ct. Rept.Vanessa Townsel..... 115 South Wall St., Natchez 39120.....(601) 442-7454f(601) 445-7973
 Ct. Admn.....Carla Allgood..... 115 South Wall St., Natchez 39120.....(601) 442-7454f(601) 445-7973
 Staff AttyKatie W. Freiburger..... 115 South Wall St., Natchez 39120.....(601) 442-7454f(601) 445-7973

18TH CHANCERY DISTRICT*Benton, Calhoun, Lafayette, Marshall, & Tippah Counties*

Judge.....Glenn Alderson.....P.O. Drawer 70, Oxford 38655.....(662) 236-0232.....f(662) 234-8057
 Ct. Rept.Jean Marie Sparks..... P.O. Box 487, Potts Camp 38659.....(662) 333-6379.....f(662) 234-8057
 Staff Atty.....Robin Minyard..... P.O. Drawer 70, Oxford 38655.....(662) 236-0232.....f(662) 234-8057

Judge.....Robert Q. Whitwell.....P.O. Box 49, Oxford 38655.....(662) 236-0233..... f(662) 234-6996
 Ct. Rept.Kathy C. Bruce..... P.O. Box 888 Ripley 38663.....(662) 236-0233f(662) 234-6996
 Ct. Admn.....Marsha Kisner..... P.O. Box 49 Oxford 38655(662) 236-0233f(662) 234-6996
 Staff Atty.....Samantha Weathersbee. P.O. Box 49 Oxford 38655(662) 236-0233f(662) 234-6996

19TH CHANCERY DISTRICT*Jones & Wayne Counties*

Judge.....Franklin C. McKenzie Jr...P.O. Box 1961, Laurel 39441.....(601) 428-7625.....f(601) 428-3119
 Ct. Rept.Alana Blackledge P.O. Box 1961, Laurel 39441(601) 428-3625f(601) 428-3119
 Ct. Admn.....Noelle McKinnon P.O. Box 1961, Laurel 39441(601) 428-7625f(601) 428-3119
 Staff Atty.....Sarah McCormick..... P.O. Box 1961, Laurel 39441(601) 428-3637f(601) 428-3119

20TH CHANCERY DISTRICT*Rankin County*

Judge.....John S. Grant.....P.O. Box 1437, Brandon 39043.....(601) 825-9208.....No Fax
 Ct. Rept.Due McKinion..... P.O. Box 1437, Brandon 39043(601) 825-9227No Fax
 Ct. Admn.....Lindsey Hill Stringer..... P.O. Box 1437, Brandon 39043(601) 825-9208No Fax
 Staff Atty.....Stephen Edwards..... P.O. Box 1437, Brandon 39043(601) 825-9226No Fax

Judge.....John C. McLaurin Jr...P.O. Box 1437, Brandon 39043.....(601) 591-4722.....No Fax
 Ct. Rept.Karen Hall..... P.O. Box 1437, Brandon 39043.....(601) 591-4711No Fax
 D. Ct. Admn.Cindy Edwards..... P.O. Box 1437, Brandon 39043(601) 591-4722No Fax
 Law Clerk.....Stephen Edwards..... P.O. Box 1437, Brandon 39403.....(601) 825-9226No Fax

Judge.....Haydn J. Roberts.....P.O. Box 1437, Brandon 39043.....(601) 824-2448.....No Fax
 Ct. Rept.Tamara Hartwig-Fulgham...P.O. Box 1437, Brandon 39403.....(601) 927-3329No Fax
 D. Ct. Admn.Shanna McLaurin..... P.O. Box 1437, Brandon 39403.....(601) 824-2448No Fax
 Staff Atty.....Stephen Edwards..... P.O. Box 1437, Brandon 39403.....(601) 825-9226No Fax

DISTRICT ATTORNEYS

District 1.....John Weddle..... P.O. Box 7237, Tupelo 38802(662) 432-2800....f(662) 432-2831
 District 2.....Joel Smith..... P.O. Box 1180, Gulfport 39501.....(228) 865-4003....f(228) 865-4239
 District 3.....Ben Creekmore.....1301 Monroe Avenue, Oxford 38655(662) 534-1079....f(662) 534-1932
 District 4.....W. Dewayne Richardson..... P.O. Box 426, Greenville 38702.....(662) 378-2105....f(662) 332-4665
 District 5.....Doug Evans..... P.O. Box 1262, Grenada 38902-1262.....(662) 226-8545....f(662) 227-9558
 District 6.....Ronnie Harper P.O. Box 1148, Natchez 39121.....(601) 445-4099....f(601) 445-7947
 District 7.....Robert Shuler Smith P.O. Box 22747, Jackson 39225-2747(601) 968-6568....f(601) 968-6655
 District 8.....Mark Duncan P.O. Box 603, Philadelphia 39350.....(601) 656-1991....f(601) 656-2287
 District 9.....Richard (Ricky) Smith Jr. P.O. Box 648, Vicksburg 39181(601) 636-5754....f(601) 636-8664
 District 10.....E. J. (Bilbo) Mitchell..... P.O. Box 5172, Meridian 39302.....(601) 482-9757....f(601) 483-0085
 District 11.....Brenda F. Mitchell..... P.O. Box 848, Cleveland 38732.....(662) 843-8000....f(662) 846-1711
 District 12.....Patricia Burchell..... P.O. Box 166, Hattiesburg 39403-0166.....(601) 545-1551....f(601) 545-6097
 District 13.....Matt Sullivan 100 Court Ave., Ste. 4, Mendenhall 39114 ... (601) 847-1342....f(601) 847-3428
 District 14.....Dewitt (Dee) T. Bates Jr. 284 West Bay St., Magnolia 39652.....(601) 783-6677....f(601) 783-5646
 District 15.....Hal Kittrell.....500 Courthouse Sq., Ste. 3, Columbia 39429...(601) 731-1476....f(601) 731-1489
 District 16.....Scott Colom P.O. Box 1044, Columbus 39703.....(662) 329-5911....f(662) 327-1854
 District 17.....John W. Champion..... 365 Loshier St., Ste. 210, Hernando 38632 ... (662) 469-8014....f(662) 469-8231
 District 18.....Anthony J. Buckley..... P.O. Box 313, Laurel 39441(601) 649-4606....f(601) 428-3191
 District 19.....Anthony (Tony) Lawrence III...P.O. Box 1756, Pascagoula 39568-1756.....(228) 769-3045....f(228) 769-3345
 District 20.....Michael Guest..... P.O. Box 68, Brandon 39043.....(601) 825-1472....f(601) 825-9605
 District 21.....Akillie Malone Oliver P.O. Box 311, Durant 39063.....(662) 653-3191....f(662) 653-6723
 District 22.....Alexander C. Martin..... P.O. Drawer 767, Hazlehurst 39083(601) 894-5040....f(601) 894-9080

COUNTY COURT JUDGES

County Courts have exclusive jurisdiction over eminent domain proceedings and juvenile matters, among other things. In counties which have a County Court, a County Court judge also serves as the Youth Court judge. County Courts share jurisdiction with Circuit and Chancery Courts in some civil matters. The jurisdictional limit of County Courts is up to \$200,000. County Courts may handle non-capital felony cases transferred from Circuit Court. County Court judges may issue search warrants, set bond and preside over preliminary hearings. County Courts have concurrent jurisdiction with Justice Courts in all matters, civil and criminal.

Mississippi has 21 County Courts and 30 County Court judges. Counties which have a County Court include Adams, Bolivar, Coahoma, DeSoto, Forrest, Harrison, Hinds, Jackson, Jones, Lamar, Lauderdale, Lee, Leflore, Lowndes, Madison, Pearl River, Pike, Rankin, Warren, Washington, and Yazoo. County Court judges serve four-year terms. Elections are non-partisan.

ADAMS

Judge.....Walt Brown.....P.O. Box 1371, Natchez 39121(601) 445-7933 .. f(601) 445-2369
 Ct. Reporter.. Diane Stringer..... P.O. Box 365, McComb 39649..... (601) 248-3054...f(601) 445-2369
 Ct. Admn. Martha Griffin..... 115 S. Wall St., Natchez 39120 ... (601) 445-7933/(601) 442-6416.....f(601) 445-2369

BOLIVAR

Judge.....Hunter NowellP.O. Box 188, Cleveland 38732.....(662) 843-7175 .. f(662) 843-5337
 Ct. Reporter.. Angela McLaughlin..P.O. Box 188, Cleveland 38732..... (662) 843-7175.....No Fax
 Ct. Admn..... Courtney L. Flore... P.O. Box 188, Cleveland 38732..... (662) 843-7175.....No Fax

COAHOMA

Judge.....C. Kent HaneyP.O. Box 756, Clarksdale 38614(662) 624-3036... f(662) 351-0516
 Ct. Reporter .. Rhodes Shaffett..... P.O. Box 756, Clarksdale 38614(662) 624-3046.. f(662) 624-3075
 Ct. Admn. Emily Rodriguez..... P.O. Box 756, Clarksdale 38614 (662) 624-3036.. f(662) 624-3075

DESOTO

Judge - Place 1...Allen B. Couch Jr....2535 Hwy. 51 S., Rm. 200, Hernando 38632. . (662) 469-8317 ..f(662) 469-8317
 Ct. Reporter.. Michelle Brown 2535 Hwy. 51 S., Rm. 200, Hernando 38632.... (662) 469-8317...f(662) 469-8318
 Ct. Admn..... Marilyn Culver 2535 Hwy. 51 S., Rm. 200, Hernando 38632.... (662) 469-8317No Fax
Judge - Place 2...Craig Treadway ...2535 Hwy. 51 S., Rm. 200, Hernando 38632.....(662) 469-8336... f(662) 469-7886
 Ct. Reporter.. Marsha Allred 2535 Hwy. 51 S., Rm. 200, Hernando 38632.... (662) 429-8336...f(662) 429-8337
 Ct. Admn..... Rikki Ogle 2535 Hwy. 51 S., Rm. 200, Hernando 38632.... (662) 429-8336...f(662) 429-8337

FORREST

Judge.....Michael W. McPhail...P.O. Box 190, Hattiesburg 39403(601) 545-6075 .. f(601) 545-6105
 Ct. Reporter.. Lisa Doleac P.O. Box 190, Hattiesburg 39403..... (601) 545-6075...f(601) 545-6105
 Ct. Admn..... Carol Sykes..... P.O. Box 190, Hattiesburg 39403..... (601) 545-6075...f(601) 545-6105
 Youth Ct. Admn...Sarah Hoda..... P.O. Box 190, Hattiesburg 39403..... (601) 545-6185...f(601) 545-6105

HARRISON

Judge - Place 1...Gaston H. Hewes Jr....P.O. Box 973, Gulfport 39502.....(228) 865-4025 ... f(228) 865-4178
 Ct. Reporter.. Natasha Perkins P.O. Box 1461, Gulfport 39502..... (228) 865-4017...f(228) 865-4178
 Ct. Admn..... Sabrina Landry..... P.O. Box 1461, Gulfport 39502..... (228) 865-4175...f(228) 865-4178
Judge - Place 2...Robin Alfred Midcalf...P.O. Box 1889, Gulfport 39502.....(228) 865-4109 ... f(228) 865-4485
 Ct. Reporter.. Amanda Schmitt P.O. Box 1889, Gulfport 39502..... (228) 865-4177...f(228) 865-4485
 Ct. Admn..... Carrie Davis P.O. Box 1889, Gulfport 39502..... (228) 865-4109...f(228) 865-4485
Judge - Place 3...Margaret Alfonso...P.O. Box 134, Gulfport 39506-7017.....(228) 435-3201 ..f(228) 435-4784
 Ct. Reporter.. Jill Eades P.O. Box 134, Gulfport 39502..... (228) 435-3201...f(228) 435-4784
 Ct. Admn..... Cindy Alexander..... P.O. Box 134, Gulfport 39502..... (228) 435-3201...f(228) 435-4784

HINDS

Judge - Subdistrict 1...Melvin Priester Sr...P.O. Box 327, Jackson 39205.....(601) 968-6670.. f(601) 973-5575
 Ct. Reporter.. Sara Simms..... P.O. Box 327, Jackson 39205..... (601) 968-6668...f(601) 973-5575
 Ct. Admn..... Paula Y. Cable P.O. Box 327, Jackson 39205..... (601) 968-6648...f(601) 973-5575
 D. Ct. Admn. Caroline Brown P.O. Box 327, Jackson 39205..... (601) 968-6647...f(601) 973-5575
Judge - Subdistrict 2...LaRita Cooper-Stokes...P.O. Box 327, Jackson 39205.....(601) 968-6663 .. f(601) 973-5575
 Ct. Reporter.. Pearlie Westmoreland...P.O. Box 327, Jackson 39205..... (601) 968-6664...f(601) 973-5575
 Ct. Admn..... Paula Y. Cable P.O. Box 327, Jackson 39205..... (601) 968-6648...f(601) 973-5575
 D. Ct. Admn. Caroline Brown P.O. Box 327, Jackson 39205..... (601) 968-6647...f(601) 973-5575
Judge - Subdistrict 3...William (Bill) Skinner...P.O. Box 327, Jackson 39205.. (601) 985-3000 ...f(601) 985-3080
 Ct. Reporter.. Mary Rogers P.O. Box 327, Jackson 39205..... (601) 968-6678...f(601) 973-5575
 Ct. Admn..... Angela Cook 940 E. McDowell Rd., Jackson 39204..... (601) 985-3010...f(601) 985-3080
 Ct. Admn..... Andrea Harper 940 E. McDowell Rd., Jackson 39204..... (601) 985-3012...f(601) 985-3080

JACKSON

Judge - Place 1...Sharon W. Sigalas...4903 Telephone Rd., Pascagoula 39567.....(228) 769-3076 ...f(228) 762-7385
 Ct. Admn./Rept....Cynthia Wilson.. 4903 Telephone Rd., Pascagoula 39567 (228) 762-7370...f(228) 762-7385
Judge - Place 2...T. Larry Wilson...P.O. Box 998, Pascagoula 39568 (228) 769-3037f(228) 769-3484
 Ct. Reptorter. Lisa Brown P.O. Box 998, Pascagoula 39568 (228) 769-3037 ...f(228) 769-3484
 Ct. Admin Windy Sample P.O. Box 998, Pascagoula 39568 (228) 769-3037...f(228) 769-3484

JONES

Judge Gaylon K. Harper...5170 Hwy. 11 N, Ellisville 39437(601) 649-7500 ...f(601) 428-3620
 Ct. Reporter .. Lyn W. Sherman P.O. Box 2274, Laurel 39442..... (601) 649-7500...f(601) 649-8009

LAMAR

Judge.....William E. Andrews...P.O. Box 307, Purvis 39475.....(601) 794-3468 ..f(601) 794-3477
 Ct. Reporter.. Amy Little P.O. Box 307, Purvis 39475..... (601) 794-3468...f(601) 794-3477
 Ct. Admn..... Ruth Mossor P.O. Box 307, Purvis 39475..... (601) 794-3468...f(601) 794-3477

LAUDERDALE

Judge - Place 1...Frank M. Coleman...P.O. Box 5822, Meridian 39302.....(601) 482-9756 ...f(601) 486-4940
 Ct. Admn..... Valarie Rigdon..... 500 Constitution Avenue, Meridian 39301 (601) 482-9756...f(601) 486-4940
Judge - Place 2...Veldore F. Young-Graham...P.O. Box 1970, Meridian 39302(601) 482-9756 ...f(601) 486-4940
 Ct. Admn..... Valarie Rigdon..... 500 Constitution Avenue, Meridian 39301 (601) 482-9756...f(601) 486-4940

LEE

Judge.....Charles R. Brett.....P.O. Box 736, Tupelo 38802(662) 432-2340 ..f(662) 841-7941
 Ct. Admn..... Dee Eleopoulos..... P.O. Box 736, Tupelo 38802..... (662) 432-2340...f(662) 841-7941
 Ct. Reporter.. Cecily Faulkner..... P.O. Box 736, Tupelo 38802..... (662) 432-2341...f(662) 841-9732

LEFLORE

Judge.....Kevin A. AdamsP.O. Box 452, Greenwood 38935-0452.....(662) 455-7945 ..f(662) 453-0869
 Ct. Reporter.. Jennifer Flautt P.O. Box 452, Greenwood 38935-0452..... (662) 455-7945...f(662) 453-0869
 Ct. Admn..... Thelma Donley P.O. Box 452, Greenwood 38935-0452..... (662) 455-7945...f(662) 453-0869

LOWNDES

Judge.....Beverley M. Franklin...P.O. Box 1829, Columbus 39703.....(662) 329-5940 ...f(662) 329-3316
 Ct. Admn./Rept....Fran Cooper..... P.O. Box 1829, Columbus 39703 (662) 329-5940...f(662) 329-3316

MADISON

Judge - Place 1...Staci O'Neal.....P.O. Box 343, Canton 39046.....(601) 855-5626 ..f(601) 855-5706
 Ct. Reporter.. Debbie Nester P.O. Box 1626, Canton 39046..... (601) 855-5550...f(601) 855-5706
 Ct. Admn/Staff Atty....Lindsay Johnson...P.O. Box 1626, Canton 39046..... (601) 855-5626...f(601) 855-5706
Judge - Place 2...Edwin Y. Hannan...P.O. Box 1626, Canton 39046.....(601) 855-5626 ..f(601) 855-5706
 Ct. Reporter.. Lisha Edwards..... P.O. Box 1626, Canton 39046..... (601) 855-5636...f(601) 855-5706
 Ct. Admn/Staff Atty....Lindsay Johnson...P.O. Box 1626, Canton 39046..... (601) 855-5626...f(601) 855-5706

PEARL RIVER

Judge.....Richelle Lumpkin...P.O. Box 1746, Picayune 39466(601) 749-7720 ..f(601) 749-7725
 Ct. Admn..... Tonya Tynes P.O. Box 1746, Picayune 39466 (601) 749-7720...f(601) 749-7725
 Law Clerk..... Anthony Bounds..... P.O. Box 1746, Picayune 39466 (601) 749-7720...f(601) 749-7725

PIKE

Judge..... John Price.....101 N. Cherry St., Magnolia 39652.....(601) 783-2262 ...f(601) 783-5185
 Ct. Reporter.. Marla Elmer 101 N. Cherry St., Magnolia 39652 (601) 783-2262...f(601) 783-5185
 Ct. Admn..... Sue Moak..... 101 N. Cherry St., Magnolia 39652 (601) 783-2262...f(601) 783-5185

RANKIN

Judge - Place 1...Kent McDaniel.215 East Government St., Brandon 39042.....(601) 824-2441 ...f(601) 824-1465
 Ct. Reporter.. Debbie Denny P.O. Box 1599, Brandon 39043..... (601) 824-2403...f(601) 824-2586
 Ct. Admn..... Anita Payne P.O. Box 1599, Brandon 39043..... (601) 824-2403...f(601) 824-2586
Judge - Place 2...Thomas H. Broome...100 Court Cove, Pelahatchie 39145.....(601) 824-2545 ..f(601) 591-4788
 Ct. Admn..... Paul Bowen 100 Court Cove, Pelahatchie 39145 (601) 824-2545...f(601) 591-4788
 D. Ct. Admn. Katrina Phillips..... 100 Court Cove, Pelahatchie 39145 (601) 824-2551...f(601) 591-4788

WARREN

Judge..... John S. Price Jr.....P.O. Box 351, Vicksburg 39181.....(601) 638-8026 ..f(601) 631-8816
 Ct. Reporter.. Robin McGee..... P.O. Box 351, Vicksburg 39181 (601) 638-8026...f(601) 631-8816
 Ct. Admn..... Sherry Barnett..... P.O. Box 351, Vicksburg 39181 (601) 638-8026...f(601) 631-8816

WASHINGTON

Judge..... Vernita King Johnson...P.O. Box 816, Greenville 38702.....(662) 334-2657 ..f(662) 334-2796
 Ct. Reporter.. Jessica L. Davis..... P.O. Box 816, Greenville 38702..... (662) 334-2657 ext. 15...f(662) 334-2796
 Ct. Admn..... Tanisha Taylor..... P.O. Box 816, Greenville 38702..... (662) 334-2657...f(662) 334-2796

YAZOO

Judge.....Derek E. Parker....P.O. Box 1437, Yazoo City 39194.....(662) 746-5214 ..f(662) 746-9865
 Ct. Reporter.. Tina Wilkinson P.O. Box 1437, Yazoo City 39194..... (662) 746-5214...f(662) 746-9865
 Ct. Admn..... Nancy Wilkinson ... P.O. Box 1437, Yazoo City 39194..... (662) 746-5214...f(662) 746-9865

JUSTICE COURT JUDGES

Justice Courts have jurisdiction over small claims civil cases involving amounts of \$3,500 or less, misdemeanor criminal cases and any traffic offense that occurs outside a municipality. Justice Court judges may conduct bond hearings and preliminary hearings in felony criminal cases and may issue search warrants.

There are 82 Justice Courts with 197 judges. Justice Court judges are the only Mississippi judges elected in partisan races. They serve four-year terms.

ADAMS

North District..Patricia F. Dunmore...114 South Wall St., Natchez 39120 (601) 442-0199....f(601) 445-7902
South District..Charles L. Vess 114 South Wall St., Natchez 39120 (601) 442-0199....f(601) 445-7902

ALCORN

Post 1 Steve Little P.O. Box 360, Glen 38846..... (662) 286-7777No Fax
Post 2 Jimmy McGee P.O. Box 226, Corinth 38835-0226 (662) 286-7777....f(662) 286-2157

AMITE

District 1 Roger Arnold..... P.O. Box 362, Liberty 39645 (601) 657-4527....f(601) 657-8604
District 2 Gloria Perry..... P.O. Box 362, Liberty 39645 (601) 657-4527....f(601) 657-8604

ATTALA

East Robert T. (Bob) Jordan...100 Courthouse, Ste. 4, Kosciusko 39090... (662) 289-7272.....No Fax
West..... Rosie Sample..... 100 Courthouse, Ste. 4, Kosciusko 39090..... (662) 289-7272.....No Fax

BENTON

Northern Brody Childers..... P.O. Box 152, Ashland 38603..... (662) 224-4866....f(662) 224-6313
Southern..... Gary McBride P.O. Box 152, Ashland 38603..... (662) 224-6320....f(662) 224-6313

BOLIVAR

District 1 Harold Ward Sr. P.O. Box 1507, Cleveland 38732..... (662) 843-4008.....No Fax
District 2 James Strait P.O. Box 1507, Cleveland 38732..... (662) 843-4008.....No Fax
District 3 Betty J. Taylor..... P.O. Box 1507, Cleveland 38732..... (662) 843-4008....f(662) 846-6783

CALHOUN

Post 1 Mark Ferguson P.O. Box 7, Pittsboro 38951 (662) 412-3134.....No Fax
Post 2 Jimmy Vance..... P.O. Box 7, Pittsboro 38951 (662) 412-3134.....No Fax

CARROLL

First District.. Jimmy Avant..... P.O. Box 10, Carrollton 38917..... (662) 464-8868....f(662) 464-8824
Second District ..Dorothy Branch . P.O. Box 474, Vaiden, 39176..... (662) 464-8868....f(662) 464-8824

CHICKASAW

Post 1 Garry Turner 1 Pinson Square Rd., Houston 38851 (662) 456-3941....f(662) 448-8122
Post 2 Judy Posey 234 W. Main St., Rm. 207, Okolona 38860 (662) 447-3402....f(662) 447-5020

CHOCTAW

Post 1 William Stephenson...140 Jail House Rd., Ackerman 39735..... (662) 285-3599....f(662) 285-9039
Post 2 Teresa Weeks..... 140 Jail House Rd., Ackerman 39735 (662) 285-3599....f(662) 285-9039

CLAIBORNE

Eastern..... Mary C. Curry..... P.O. Box 296, Port Gibson 39150..... (601) 437-4478....f(601) 437-4430
Western..... Nickita S. Banks..... P.O. Box 124, Port Gibson 39150..... (601) 437-9005....f(601) 437-9015

CLARKE

Place 1..... Tobey Bartee..... P.O. Box 4, Quitman 39355..... (601) 776-5371....f(601) 776-1014
Place 2..... Terry Bonner P.O. Box 4, Quitman 39355..... (601) 776-5371....f(601) 776-1014

CLAY

District 1 Thomas G. Hampton...P.O. Box 674, West Point 39773 (662) 494-6140....f(662) 494-4034
District 2 Chris McBrayer P.O. Box 674, West Point 39773..... (662) 494-6140....f(662) 494-4034

COAHOMA

North A. Burks Rogers..... 144 Ritch St., Clarksdale 38614 (662) 627-2241No Fax
 South Jesse Burton 144 Ritch St., Clarksdale 38614 (662) 624-3060.....No Fax

COPIAH

Post 1.....Lillie V. McKenzie.... 121 W. Frost St., Hazlehurst 39083.....(601) 894-3218....f(601) 894-6038
 Post 2 Vickie Bass Ramsey...121 W. Frost St., Hazlehurst 39083(601) 894-3218....f(601) 894-6038

COVINGTON

Northern Bobby Wayne Mooney...P.O. Box 665, Collins 39428..... (601) 765-6581....f(601) 765-5014
 Southern..... John Laz Sanford P.O. Box 665, Collins 39428..... (601) 765-6581....f(601) 765-5014

DESOTO

District 1 Kenneth Adams..... 8525 Hwy. 51 N., Southaven 38671 (662) 469-8026....f(662) 469-8825
 District 2 Larry Vaughn..... 8525 Hwy. 51 N., Southaven 38671 (662) 469-8026....f(662) 469-8825
 District 3 William H. Lantrip...8525 Hwy. 51 N., Southaven 38671 (662) 469-8026....f(662) 469-8825
 District 4 Brad Russell..... 8525 Hwy. 51 N., Southaven 38671 (662) 469-8026....f(662) 469-8825
 District 5 Karen Sanders..... 8525 Hwy. 51 N., Southaven 38671 (662) 469-8026....f(662) 469-8825

FORREST

District 1 Wes Curry..... 700 Main St., Hattiesburg 39401 (601) 544-3136....f(601) 545-6114
 District 2 George (Pat) Causey...700 Main St., Hattiesburg 39401 (601) 544-3136....f(601) 545-6114
 District 3 Gay Polk-Payton..... 700 Main St., Hattiesburg 39401 (601) 544-3136....f(601) 545-6114
 District 4 Robert Davis 700 Main St., Hattiesburg 39401 (601) 544-3136....f(601) 545-6114

FRANKLIN

District 1 Rickey O'Quinn P.O. Box 365, Meadville 39653 (601) 384-2002.....No Fax
 District 2 Jerry Crane..... P.O. Box 365, Meadville 39653 (601) 384-2002.....No Fax

GEORGE

District 1 Mike Bullock..... 368 Cox St., Lucedale 39452..... (601) 947-4834....f(601) 947-1911
 District 2 Jessie Underwood... 368 Cox St., Lucedale 39452..... (601) 947-4834....f(601) 947-1911

GREENE

Post 1 Jeff Byrd..... P.O. Box 547, Leakesville 39451 (601) 394-2347....f(601) 394-2114
 Post 2 L. Joe Beard P.O. Box 547, Leakesville 39451 (601) 394-2347....f(601) 394-2114

GRENADA

East District .. Leon Williamson.... 16 First St., Grenada 38901 (662) 226-3331....f(662) 227-5513
 West District Jimmy Tallant 16 First St., Grenada 38901 (662) 226-3331....f(662) 227-5513

HANCOCK

Place 1..... Desmond Hoda..... 8450 Hwy. 90, Bay St. Louis 39520 (228) 467-5573....f(228) 255-5851
 Place 2..... Jay A. Lagasse III.... 8450 Hwy. 90, Bay St. Louis 39520 (228) 467-5573....f(228) 255-5851
 Place 3..... Tommy Carver..... 8450 Hwy. 90, Bay St. Louis 39520 (228) 467-5573....f(228) 255-5851

HARRISON

District 1 Albert Fountain P.O. Box 1141, Biloxi 39533..... (228) 435-8254.....No Fax
 District 2 Brandon Ladner..... P.O. Box 1754, Gulfport 39502..... (228) 865-4199.....No Fax
 District 3 Dianne Ladner P.O. Box 1754, Gulfport 39502..... (228) 865-4218.....No Fax
 District 4 Melvin J. Ray P.O. Box 1754, Gulfport 39502..... (228) 865-4215.....No Fax
 District 5 Bruce Strong P.O. Box 1141, Biloxi 39533..... (228) 435-8256.....No Fax

HINDS

District 1 Don Palmer P.O. Box 3490, Jackson 39207..... (601) 965-8800.....No Fax
 District 2 Tabitha Britton-Porter...P.O. Box 3490, Jackson 39207 (601) 965-8800.....No Fax
 District 3 Frank Sutton P.O. Box 3490, Jackson 39207..... (601) 965-8800.....No Fax
 District 4 Jimmy Morton P.O. Box 3490, Jackson 39207..... (601) 965-8800.....No Fax
 District 5 Pearlie Brown Owens...P.O. Box 3490, Jackson 39207 (601) 965-8800.....No Fax

HOLMES

District 1 Shirley Neal P.O. Box 99, Lexington 39095 (662)834-4565....f(662) 834-1402
 District 2 Marucs Fisher P.O. Box 99, Lexington 39095 (662) 834-4565....f(662) 834-1402

HUMPHREYS

Northern Abraham Gates 102 Castleman St., Belzoni 39038..... (662) 247-4337....f(662) 247-1095
 Southern..... Shirley Brown-Cummings...102 Castleman St., Belzoni 39038 (662) 247-4337....f(662) 247-1095

ISSAQUENA

Post 1 Gayle Bunton Coleman...P.O. Box 58, Mayersville 39113 (662) 873-6287....f(662) 873-2094
 Post 2 Tommy Williams ... P.O. Box 58, Mayersville 39113 (662) 873-6287....f(662) 873-2094

ITAWAMBA

East District .. Harold Holcomb 304 W. Wiygul St., Ste. D, Fulton 38843 (662) 862-4315....f(662) 862-5805
 West District John Bishop..... 304 W. Wiygul St., Ste. D, Fulton 38843 (662) 862-4315....f(662) 862-5805

JACKSON

District 1 Matt Lachaussee 5343 Jefferson St., Moss Point 39563..... (228) 769-3081....f(228) 769-3364
 District 2 Ennis Millender Sr....5343 Jefferson St., Moss Point 39563 (228) 769-3083....f(228) 769-3364
 District 3 Jason Thornton 5343 Jefferson St., Moss Point 39563..... (228) 769-3082....f(228) 769-3364
 District 4 Danny Guice III 5343 Jefferson St., Moss Point 39563..... (228) 769-3190....f(228) 769-3364

JASPER

District 1 Sullivan Dukes Jr. P.O. Box 39, Paulding 39348..... (601) 727-2247....f(601) 764-2246
 District 2 Marvin Jones..... P.O. Box 1054, Bay Springs 39422..... (601) 764-2065....f(601) 764-3402

JEFFERSON

District 1 Tomika T. Harris-Irving...P.O. Box 1047, Fayette 39069..... (601) 786-8594....f(601) 786-6017
 District 2 James E. Oliver P.O. Box 1047, Fayette 39069 (601) 786-8594....f(601) 786-6017

JEFFERSON DAVIS

Post 1 Ronnie Barnes P.O. Box 1407, Prentiss 39474 (601) 792-5129....f(601) 792-5980
 Post 2 Calvin Graves..... P.O. Box 1407, Prentiss 39474 (601) 792-5129....f(601) 792-5980

JONES

District 1 Howell Beech 5180 Hwy. 11 N., Ellisville 39437 (601) 428-3137.....No Fax
 District 2 Billie J. Graham..... 5180 Hwy. 11 N., Ellisville 39437 (601) 428-3137.....No Fax
 District 3 David Lyons 5180 Hwy. 11 N., Ellisville 39437 (601) 428-3137.....No Fax

KEMPER

Post 1 Mary Gully P.O. Box 661, DeKalb 39328 (601) 743-2793....f(601) 743-2789
 Post 2 Linda Sciple Wright...P.O. Box 661, DeKalb 39328 (601) 743-2793....f(601) 743-2789

LAFAYETTE

Northern District...Carolyn Pettis Bell...713 Jackson Ave., Oxford 38655 (662) 234-7659....f(662) 238-7990
 Central District.....Mickey Avent . 713 Jackson Ave., Oxford 38655..... (662) 234-1545....f(662) 238-7990
 Southern District..Johnny Wayne McLarty...713 Jackson Ave., Oxford 38655..... (662) 234-1545....f(662) 238-7990

LAMAR

Post 1 Bill Anderson P.O. Box 1010, Purvis 39475 (601) 794-2950....f(601) 794-1076
 Post 2 Denton Plumlee P.O. Box 1010, Purvis 39475 (601) 794-2950....f(601) 794-1076
 Post 3 Charles Greer P.O. Box 1010, Purvis 39475 (601) 794-2950....f(601) 794-1076

LAUDERDALE

District 1 Richard (Ricky) L. Roberts...P.O. Box 5126, Meridian 39302..... (601) 482-9874....f(601) 482-9813
 District 2 M. Robbie Robinson....P.O. Box 5126, Meridian 39302 (601) 482-9874....f(601) 482-9813
 District 3 Darrell J. Theall P.O. Box 5126, Meridian 39302..... (601) 482-9874....f(601) 482-9813
 District 4 Gerald Wayne Thompson...P.O. Box 5126, Meridian 39302..... (601) 482-9874....f(601) 482-9813

LAWRENCE

Post 1 Albert Turnage P.O. Box 903, Monticello 39654 (601) 587-4854....f(601) 587-0755
 Post 2 Donald Glenn Mullins...P.O. Box 903, Monticello 39654..... (601) 587-4854....f(601) 587-0755

LEAKE

Eastern..... Sonya Neely..... P.O. Box 69, Carthage 39051 (601) 267-5677....f(601) 267-6134
 Western..... Ruby Graham..... P.O. Box 69, Carthage 39051 (601) 267-5677....f(601) 267-6134

LEE

District 1 Charles (Chuck) Hopkins...P.O. Box 108, Tupelo 38802 (662) 432-2551....f(662) 680-6021
 District 2 John H. Sheffield.... P.O. Box 108, Tupelo 38802..... (662) 432-2551....f(662) 680-6021
 District 3 Sadie M. Holland P.O. Box 108, Tupelo 38802..... (662) 432-2553....f(662) 680-6021
 District 4 Marcus Crump..... P.O. Box 108, Tupelo 38802..... (662) 432-2554....f(662) 680-6021

LEFLORE

Central District..James Littleton ... P.O. Box 8056, Greenwood 38935 (662) 453-1605....f(662) 455-8759
 Northern District..Jim Campbell. P.O. Box 8056, Greenwood 38935 (662) 453-1605....f(662) 455-8759
 Southern District..Carlos Palmer . P.O. Box 8056, Greenwood 38935 (662) 453-1605....f(662) 455-8759

LINCOLN

Post 1 Joe Portrey..... P.O. Box 767, Brookhaven 39602..... (601) 835-3474....f(601) 835-3494
 Post 2 Roger Martin P.O. Box 767, Brookhaven 39602..... (601) 835-3474....f(601) 835-3494

LOWNDES

District 1 Chris Hemphill 11 Airline Rd., Columbus 39702 (662) 329-5929....f(662) 245-4619
 District 2 Ron Cooke 11 Airline Rd., Columbus 39702 (662) 329-5929....f(662) 245-4619
 District 3 Peggy G. Phillips..... 11 Airline Rd., Columbus 39702 (662) 329-5929....f(662) 245-4619

MADISON

District 1 Marsha Weems Stacey...2961 S. Liberty, Canton 39046 (601) 859-6337....f(601) 859-5878
 District 2 Martina Griffin 2961 S. Liberty, Canton 39046..... (601) 859-6337....f(601) 859-5878
 District 3 Lloyd G. Spivey III.. 2961 S. Liberty, Canton 39046..... (601) 859-6337....f(601) 859-5878
 District 4 Bruce McKinley..... 2961 S. Liberty, Canton 39046..... (601) 859-6337....f(601) 859-5878

MARION

Post 1 Sharon Hatfield Whitfield...500 Courthouse Sq., Ste. 2, Columbia 39429. (601) 736-2572.... f(601) 736-2580
 Post 2 Gwen Broom. 500 Courthouse Sq., Ste. 2, Columbia 39429 ... (601) 736-2572....f(601) 736-2580

MARSHALL

North Mae Garrison P.O. Drawer 729, Holly Springs 38635 (662) 252-3585....f(662) 252-0028
 South Ernest Cunningham...P.O. Drawer 729, Holly Springs 38635 (662) 252-3585....f(662) 252-0028

MONROE

District 1 Kevin Crook P.O. Box 518, Amory 38821..... (662) 256-8493....f(662) 256-7876
 District 2 Robert Earl Fowlkes...P.O. Box 518, Amory 38821..... (662) 256-8493....f(662) 256-7876
 District 3 Adrian McIntosh Haynes...P.O. Box 518, Amory 38821..... (662) 256-8493....f(662) 256-7876

MONTGOMERY

District 1 Keith Stokes Roberts...P.O. Box 229, Winona 38967 (662) 283-2290....f(662) 283-2052
 District 2 Larry E. Bamberg.... P.O. Box 229, Winona 38967 (662) 283-2290....f(662) 283-2052

NESHOBA

Place 1..... Steve Cumberland .. 200 Byrd Ave., Philadelphia 39350..... (601) 650-3584....f(601) 656-6482
 Place 2..... Johnathan Spears.... 200 Byrd Ave., Philadelphia 39350..... (601) 656-4053....f(601) 656-6482

NEWTON

District 1 Scott Round P.O. Box 69, Decatur 39327 (601) 635-2740....f(601) 635-4047
 District 2 Mark McDonald P.O. Box 69, Decatur 39327 (601) 635-2740....f(601) 635-4047

NOXUBEE

Northern District..Dorothy Stewart...P.O. Box 550, Macon 39341..... (662) 726-5834....f(662) 726-2944
 Southern District..Timothy L. (Tim) Gowan...P.O. Box 550, Macon 39341..... (662) 726-5834....f(662) 726-2944

OKTIBBEHA

District 1 William A. Boykin Jr....104 Felix Long Dr., Starkville 39759 (662) 324-3032....f(662) 388-1078
 District 2 Larnzy Carpenter Jr....104 Felix Long Dr., Starkville 39759 (662) 324-3032....f(662) 388-1078
 District 3 Charles Haug..... 104 Felix Long Dr., Starkville 39759..... (662) 324-3032....f(662) 388-1078

PANOLA

Post 1 Mike Wilson P.O. Box 249, Sardis 38666..... (662) 487-2080....f(662) 487-2008
 Post 2 Charlie Baglan P.O. Box 249, Sardis 38666..... (662) 487-2080....f(662) 487-2008

PEARL RIVER

North James Hal Breland.....169 Savannah-Millard Rd., Ste. A, Poplarville 39470.(601) 403-2500.....f(601) 403-2553
 Southeast..... Donald Fail.....169 Savannah-Millard Rd., Ste. A, Poplarville 39470.(601) 403-2500.....f(601) 403-2553
 Southwest.....John Mark Mitchell .. 169 Savannah-Millard Rd., Ste. A, Poplarville 39470.(601) 403-2500.....f(601) 403-2553

PERRY

District 1 Tim Odom..... P.O. Box 345, New Augusta 39462..... (601) 964-8366....f(601) 964-8368
 District 2 Carl Griffin..... P.O. Box 345, New Augusta 39462..... (601) 964-8366....f(601) 964-8368

PIKE

Central District..Melvin Hollins... P.O. Box 509, Magnolia 39652..... (601) 783-5333....f(601) 783-4181
 Northern District...Bryan C. Harbour...P.O. Box 509, Magnolia 39652 (601) 783-5333....f(601) 783-4181
 Southern District...Aubrey Rimes . P.O. Box 509, Magnolia 39652..... (601) 783-5333....f(601) 783-4181

PONTOTOC

East David A. Hall..... 29 E. Washington, Pontotoc 38863 (662) 489-3920....f(662) 489-2986
 West..... Scottie Harrison..... 29 E. Washington, Pontotoc 38863 (662) 489-3920....f(662) 489-2986

PRENTISS

Northern Richard Tollison..... 1901-C E. Chambers Dr., Booneville 38829..... (662) 728-8696....f(662) 728-2009
 Southern Angela White Pounds...1901-C E. Chambers Dr., Booneville 38829.. (662) 728-8696....f(662) 728-2009

QUITMAN

District 1 Brenda W. Cook..... 275 East Main St., Marks 38646 (662) 326-2104....f(662) 326-2330
 District 2 Joe M. Brown..... P.O. Box 100, Marks 38646..... (662) 326-2104....f(662) 326-2330

RANKIN

District 1 Richard Redfern P.O. Box 71, Brandon 39043 (601) 824-2596.....No Fax
 District 2 John Shirley..... P.O. Box 71, Brandon 39043 (601) 992-8589.....No Fax
 District 3 Joshua McCrory..... P.O. Box 71, Brandon 39043 (601) 824-2598.....No Fax
 District 4 Ken Fairly..... P.O. Box 71, Brandon 39043 (601) 824-2597.....No Fax

SCOTT

Post 1 Wilbur McCurdy... P.O. Box 371, Forest 39074 (601) 469-4555....f(601) 469-5193
 Post 2 Bill Freeman..... P.O. Box 371, Forest 39074 (601) 469-4555....f(601) 469-5193

SHARKEY

Post 1 Charles Smith..... P.O. Box 39, Anguilla 38721 (662) 873-6140....f(662) 873-0154
 Post 2 Clark Secoy..... P.O. Box 235, Rolling Fork 39159..... (662) 873-6140....f(662) 873-0154

SIMPSON

Post 1 Ted Blakeney 1498 Simpson Hwy. 149, Mendenhall 39114 ... (601) 847-5848....f(601) 847-5856
 Post 2 Eugene Knight..... 1498 Simpson Hwy. 149, Mendenhall 39114... (601) 847-5848....f(601) 847-5856

SMITH

Post 1 Jerry Baldwin P.O. Box 171, Raleigh 39153 (601) 782-4334....f(601) 782-4005
 Post 2 Hulon West..... P.O. Box 171, Raleigh 39153 (601) 782-4334....f(601) 782-4005

STONE

East District ..Justin Miles 231 Third St., Wiggins 39577..... (601) 928-4415....f(601) 928-2114
 West District Ricky Farmer 231 Third St., Wiggins 39577..... (601) 928-4415....f(601) 928-2114

SUNFLOWER

North Stafford Shurden..... P.O. Box 52, Ruleville 38771..... (662) 756-2835....f(662) 756-4175
 South Gwendolyn Pernell...P.O. Box 487, Indianola 38751..... (662) 887-2926....f(662) 887-2798

TALLAHATCHIE

District 1 Jimmy D. Fly Jr. P.O. Box 440, Charleston 38921 (662) 647-3477No Fax
 District 2 Denise Washington...P.O. Box 155, Sumner 38957 (662) 375-9452.....No Fax

TATE

Post 1.....Malcolm (Trey) Manning..103 Preston McKay Dr., Senatobia 38668 (662) 562-7626.....f(662) 562-7663
 Post 2..... Robert L. Taylor..... 103 Preston McKay Dr., Senatobia 38668..... (662) 562-7626....f(662) 562-7663

TIPPAH

North.....Jerome Brown..... 205-B Spring Ave., Ripley 38663..... (662) 837-8842....f(662) 837-1398
 South..... Sonny Meeks..... 205-B Spring Ave., Ripley 38663..... (662) 837-8842....f(662) 837-1398

TISHOMINGO

North..... Clayton Matt Cummings...1008 Battleground Dr., Iuka 38852..... (662) 423-7033....f(662) 423-7050
 South..... Donny Joe Sparks ... 1008 Battleground Dr., Iuka 38852 (662) 423-7033....f(662) 423-7050

TUNICA

North..... Rodney Hibbler..... 5130 Old Moon Landing Rd., Tunica 38676.... (662) 363-2178....f(662) 363-4234
 South..... Richard W. Ryals II..5130 Old Moon Landing Rd., Tunica 38676 (662) 363-2178....f(662) 363-4234

UNION

East..... David Garrison..... P.O. Box 27, New Albany 38652..... (662) 534-1951....f(662) 534-1935
 West..... Christopher Childers...P.O. Box 27, New Albany 38652 (662) 534-1951....f(662) 534-1935

WALTHALL

District 1..... Carl Montgomery Jr....P.O. Box 507, Tylertown 39667 (601) 876-2311....f(601) 876-6866
 District 2..... Ryan Bruhl..... P.O. Box 507, Tylertown 39667..... (601) 876-2311....f(601) 876-6866

WARREN

Central..... James Jefferson P.O. Box 1598, Vicksburg 39181 (601) 634-6402....f(601) 630-8015
 North..... Edwin Woods Jr. ... P.O. Box 1598, Vicksburg 39181 (601) 634-6402....f(601) 630-8015
 South..... Jeff Crevitt..... P.O. Box 1598, Vicksburg 39181 (601) 634-6402....f(601) 630-8015

WASHINGTON

District 1..... Laverne Holmes-Carter...905 W. Alexander, Greenville 38701 (662) 332-0633....f(662) 390-4760
 District 2..... Laverne Simpson.... 905 W. Alexander, Greenville 38701 (662) 332-0633....f(662) 390-4760
 District 3..... Cedric C. Bush 905 W. Alexander, Greenville 38701 (662) 332-0633....f(662) 390-4760

WAYNE

Post 1..... Charles Chapman ... 810 Chickasawhay St., Waynesboro 39367 (601) 735-3118....f(601) 735-6266
 Post 2..... Steve Walker 810 Chickasawhay St., Waynesboro 39367 (601) 735-3118....f(601) 735-6266

WEBSTER

District 1..... Jerry Jones 30 E. Fox Ave., Eupora 39744..... (662) 258-2590....f(662) 258-3093
 District 2..... Rebecca E. Ellison... 28 E. Fox Ave., Eupora 39744..... (662) 258-2590....f(662) 258-3093

WILKINSON

East..... Ernest Smith P.O. Box 40, Woodville 39669..... (601) 888-3538....f(601) 888-7591
 West..... Lee Dixon..... P.O. Box 40, Woodville 39669..... (601) 888-3538....f(601) 888-7591

WINSTON

East..... Mike Fuller..... P.O. Box 327, Louisville 39339 (662) 773-6016....f(662) 773-8817
 West..... Robert A. Beck..... P.O. Box 327, Louisville 39339 (662) 773-6016....f(662) 773-8817

YALOBUSHA

District 1..... Janet Caulder..... P.O. Box 475, Coffeetown 38922 (662) 675-2025....f(662) 675-8188
 District 2..... Steve Riley..... 7092 CR 436, Water Valley 38965 (662) 473-4502....f(662) 473-3622

YAZOO

Northern District...Pam Ingram May...P.O. Box 798, Yazoo City 39194..... (662) 746-8181....f(662) 746-2023
 Southern District...Bennie (Kay) Warrington...P.O. Box 798, Yazoo City 39194 ... (662) 746-8181....f(662) 746-2023

MUNICIPAL COURT JUDGES

Municipal courts have jurisdiction over misdemeanor crimes, municipal ordinances and city traffic violations. Municipal judges may conduct initial appearances in which defendants are advised of the charges being filed, as well as bond hearings and preliminary hearings.

There are 237 Municipal Courts with 259 judges. Most municipalities have one municipal judge, although a few jurisdictions have several. Most municipal judges are appointed by governing bodies of municipalities. Terms of office vary.

AbbevilleCarolyn Pettis Bell.....	8 Park Dr., Abbeville 38601.....	(662) 234-7659.....	f(662) 915-1217
AberdeenShane Tompkins.....	125 W. Commerce St., Aberdeen 39730	(662) 328-7577.....	f(888) 665-9425
AckermanBuchanan Meek Jr.	65 N. Dunn St., Eupora 39744.....	(662) 285-3521.....	f(662) 258-2914
AlgomaScottie Harrison.....	29 E. Washington St., Algoma 38820.....	(662) 488-2986.....	f(662) 489-3200
	David Hall.....	29 E. Washington St., Algoma 38820.....	(662) 488-2986.....
AmoryMichael Malski.....	P.O. Box 457, Amory 38821-0457.....	(662) 256-5635.....	f(662) 256-6320
AnguillaAllan Woodard.....	P.O. Box 217, Anguilla 38721-0271.....	(662) 873-6777.....	f(662) 873-9000
ArcolaG. Kenner Ellis.....	P.O. Box 452, Greenville 38702-0452 ..	(662) 907-9568.....	f(662) 827-0451
AshlandGary McBride.....	P.O. Box 246, Ashland 38603.....	(662) 224-6282.....	f(662) 224-8257
BaldwynThomas Comer Jr.....	106 W. College St., Booneville 38829.....	(662) 365-1041.....	f(866) 245-2479
BatesvilleWilliam H. McKenzie III... P.O. Box 689, Batesville 38606.....		(662) 563-4576.....	f(662) 563-5120
Bay Springs ...Lillous Shoemaker.....	P.O. Box 307, Bay Springs 39422.....	(601) 764-4112.....	f(601) 764-4110
Bay St. Louis ..Stephen Maggio.....	688 Highway 90, Bay St. Louis 39520.....	(228) 467-9068.....	f(228) 466-5495
BeaumontLin Carter Jr.	P.O. Box 605, Beaumont 39423-0605.....	(601) 784-3352.....	f(601) 784-3352
BelmontDonnie Joe Sparks.....	P.O. Box 489, Belmont 38827.....	(662) 454-3381.....	f(662) 454-9263
BelzoniW.C. Trotter III.....	P.O. Box 338, Belzoni 39038-0338.....	(662) 247-1362.....	f(662) 247-3333
BenoitJames Strait.....	P.O. Box 66, Benoit 38725.....	(662) 742-3751.....	f(662) 742-3758
BentonRogen Chabra.....	P.O. Box 310, Benton 39040-0310.....	(662) 755-2281.....	f(662) 755-2281
Big CreekJimmy Vance.....	P.O. Box 2098, Big Creek 38914.....	(662) 628-6966.....	No Fax
BiloxiWilliam Tisdale.....	170 Porter Avenue, Biloxi 39530.....	(228) 435-6125.....	f(228) 435-6165
	James Steele.....	170 Porter Avenue, Biloxi 39530.....	(228) 435-6125.....
Blue Mountain ..Joe T. Gay.....	104 S. Main St., Ripley 38663.....	(662) 837-7633.....	f(662) 685-4031
BoltonBernard C. Jones Jr.....	P.O. Box 7, Bolton 39041.....	(601) 866-2221.....	f(601) 866-7434
BoonevilleGeorge M. Via.....	203 N. Main St., Booneville 38829.....	(662) 728-6810.....	f(662) 728-1482
BrandonWhitney Adams.....	P.O. Box 790, Brandon 39043.....	(601) 825-7226.....	f(601) 825-8595
	Jack B. Brenmen.....	P.O. Box 790, Brandon 39043.....	(601) 825-7226.....
Brookhaven ..Bradley Boerner.....	P.O. Box 560, Brookhaven 39602.....	(601) 833-6262.....	f(601) 833-4742
BrooksvilleDorothy Stewart.....	P.O. Box 256, Brooksville 39739-0256.....	(662) 738-5531.....	f(662) 738-5020
BruceBenjamin Super.....	P.O. Box 667, Bruce 38915.....	(662) 983-2453.....	f(662) 983-2433
BudeJerry E. Crane.....	P.O. Box 448, Bude 39630.....	(601) 384-2600.....	f(601) 384-4193
BurnsvilleDonnie Joe Sparks.....	P.O. Box 308, Burnsville 38833-0308.....	(662) 427-9526.....	f(662) 427-0001
ByhaliaJim McGarrah.....	P.O. Box 412, Byhalia 38611.....	(662) 838-2135.....	f(662) 838-3709
ByramDale Schwindaman.....	P.O. Box 720222, Byram 39272.....	(601) 500-7010.....	f(601) 372-7748
CaledoniaPeggy Phillips.....	P.O. Box 100, Caledonia 39740.....	(662) 356-4117.....	f(662) 356-9122
Calhoun City ..Jimmy Vance.....	P.O. Box E, Calhoun City 38916.....	(662) 628-8345.....	f(662) 628-8931
CantonKemisha Mumford.....	226 E. Peace St., Canton 39046.....	(601) 859-9291.....	f(601) 859-9034
CarthageJohnny Pope.....	P.O. Box 329, Carthage 39051.....	(601) 267-5636.....	f(601) 267-5637
CentrevilleDavid S. Crawford.....	P.O. Box 578, Centreville 39631.....	(601) 888-3102.....	f(601) 888-3104
CharlestonTara Lang.....	P.O. Box 420, Charleston 38921.....	(662) 627-5841.....	f(662) 647-8768
ClarksdaleJoseph C. Gibbs.....	P.O. Box 940, Clarksdale 38614.....	(662) 627-4146.....	f(662) 621-8130
	Don A. Dees.....	P.O. Box 940, Clarksdale 38614.....	(662) 627-4126.....
ClevelandJeffrey Levingston.....	P.O. Box 1327, Cleveland 38732.....	(662) 843-2791.....	f(662) 843-2797
ClintonSteven Nixon.....	305 Monroe St., Clinton 39056.....	(601) 925-4700.....	f(601) 925-1018
	Steven Boone.....	305 Monroe St., Clinton 39056.....	(601) 925-0811.....
CoahomaJesse Burt.....	P.O. Box 103, Coahoma 38617-0103.....	(662) 337-2964.....	No Fax
CoffeevilleTommy Defer.....	111 Calhoun St., Water Valley 38965.....	(662) 473-0900.....	f(662) 473-0902
ColdwaterJohn K. Perry.....	P.O. Box 352, Coldwater 38618-0352.....	(662) 622-7241.....	f(662) 622-7242
CollinsJohn Laz Sanford.....	P.O. Box 400, Collins 39428.....	(601) 765-4491.....	f(601) 765-4800

ColumbiaDonovan O. McComb 203 Second St., Columbia 39429(601) 736-4418..... f(601) 736-7066
ColumbusRhonda Hayes-Ellis 1501 Main St., Columbus 39701(662) 244-3504..... f(662) 244-3586
Gary Goodwin 1501 Main St., Columbus 39701(662) 244-3504..... f(662) 244-3586
ComoMildred J. Lesure P.O. Box 541, Senatobia 38668(662) 560-0201..... f(662) 560-0089
CorinthJohn C. Ross P.O. Box 669, Corinth 38835(662) 286-2236..... f(662) 286-1315
CourtlandWilliam H. McKenzie P.O. Box 51, Courtland 38620(662) 563-3536..... f(662) 563-2566
CrenshawMildred J. Lesure P.O. Box 541, Senatobia 38668(662) 560-0201..... f(662) 560-0089
CrosbyTomika Irving P.O. Box 338, Crosby 39633(601) 639-4516..... f(601) 639-4517
CrowderRobert G. Roy P.O. Box 97, Crowder 38622(662) 326-8530..... f(662) 326-2754
CrugerErica Haymer P.O. Box 214, Cruger 38924(662) 455-5155..... f(662) 455-9908
DecaturTyler McCaughn P.O. Box 307, Decatur 39327-0307(601) 635-2761..... f(601) 635-4012
DeKalbRobert Jones P.O. Box 579, DeKalb 39328(601) 743-2870..... f(601) 743-2422
DermaMarkail Ferguson P.O. Box 1068, Bruce 38915(662) 927-0613..... f(662) 628-4101
D'IbervilleAlbert Fountain 10383 Automall Parkway, D'Iberville 39540(228) 392-9726..... f(228) 392-9723
D'LoVACANT P.O. Box 100, D'Lo 39062(601) 847-1721..... f(601) 847-1929
DrewWarren Bell 130 W. Shaw Ave., Drew 38737(662) 745-8556..... f(662) 745-8731
Duck HillMary Brown P.O. Box 368, Duck Hill 38925-0368(662) 565-7200..... f(662) 565-2721
DurantJim Arnold Jr. P.O. Box 272, Durant 39063(662) 653-6488..... f(662) 653-6958
EcuDavid Hall P.O. Box 526, Ecu 38841(662) 489-3920..... f(662) 489-0196
EdwardsFrank Sutton P.O. Box 215, Edwards 39066(601) 852-5461..... f(601) 852-8521
EllisvilleDavid Lyons 110 Court St., Ellisville 39437(601) 477-3323..... f(601) 477-9083
EnterpriseJim Potuk P.O. Box 266, Enterprise 39330(601) 659-7971..... f(601) 659-7971
EthelBob Jordan P.O. Box 58, Ethel 39067-0058(662) 674-5222..... f(662) 674-5057
EuporaBuchanan Meek Jr. 390 Clark Ave., Eupora 39744(662) 258-2291..... f(662) 258-5331
FarmingtonJohn Ross P.O. Box 2796, Farmington 38835(662) 665-9647..... f(662) 665-0067
FayetteDeborah McDonald P.O. Box 637, Fayette 39069-0637(601) 786-3682..... f(601) 786-6425
FloraRobert Camp P.O. Box 218, Flora 39071(601) 879-8686..... f(601) 879-3630
FlorenceKen Fairly P.O. Box 187, Florence 39073(601) 845-7508..... f(601) 845-0458
FlowoodLem Adams 2010 Airport Rd. Ste. B, Flowood 39232(601) 420-3364..... f(601) 420-3349
ForestJ. Norman Brown 850 Park Rd., Forest 39074-0382(601) 469-2721..... f(601) 469-4216
Friars PointJessie Burton P.O. Box 185, Friars Point 38631-0185(662) 383-2233..... f(662) 383-2403
FultonHarold Holcomb 213 W. Wiygul, Fulton 38843(662) 862-4929..... f(662) 862-9817
GautierJason Thornton 3330 Hwy. 90, Gautier 39553(228) 497-8000..... f(228) 497-8028
GlosterRoger Arnold P.O. Box 1019, Gloster 39638(601) 225-4216..... f(601) 225-4772
GoldenDonny Joe Sparks P.O. Box 426, Golden 38847-0426(662) 454-7100..... f(662) 454-9263
GoodmanAmy Gowan P.O. Box 397, Goodman 39079-0397(662) 472-2263..... f(662) 472-2513
GreenvilleMichael L. Prewitt P.O. Box 1313, Greenville 38702(662) 378-1522..... f(662) 378-1586
GreenwoodCarlos D. Palmer P.O. Box 272, Greenwood 38935(662) 459-9111..... f(662) 455-9115
GrenadaA.E. Rusty Harlow Jr. 26 N. Green St., Grenada 38901(662) 227-3430..... f(662) 227-3401
GulfportKirk Clark 2218 15th St., Gulfport 39501(228) 868-5855..... f(228) 214-2316
R. Fant Walker 2218 15th St., Gulfport 39501(228) 868-5855..... f(228) 214-2316
Richard J. Smith 2218 15th St., Gulfport 39501(228) 868-5855..... f(228) 214-2316
GunnisonVACANT P.O. Box 278, Gunnison 38746(662) 747-2213..... f(662) 747-2263
GuntownPhillip M. Blanchard P.O. Box 27, Guntown 38849-0027(662) 348-5353..... f(662) 348-2319
HatleyKevin Crook 60279 Hatley Rd., Amory 38821(662) 256-7245..... f(662) 258-7255
HattiesburgJerry Evans 1 Government Plaza, Hattiesburg 39401(601) 545-4550..... f(601) 545-2488
HazlehurstVivki Bass Ramsey P.O. Box 549, Hazlehurst 39083(601) 892-7796..... f(601) 894-3707
HeidelbergSullivan Dukes P.O. Box 372, Heidelberg 39439-0372(601) 787-3000..... f(601) 787-4611
HernandoAnthony Nowak 2601 Elm St., Hernando 38632(662) 429-9096..... f(662) 449-3350
HickoryJan Addy P.O. Box 10, Hickory 39332-0010(601) 646-2211..... f(601) 646-2213
Hickory FlatGary McBride P.O. Box 479, Hickory Flat 38633-0479(662) 333-7884..... f(662) 333-6003
HollandaleMichael L. Prewitt P.O. Box 395, Hollandale 38748-0395(662) 827-2241..... f(662) 827-5596
Holly SpringsAmanda W. Smith 538 JM Ash Dr., Holly Springs 38635(662) 252-2122..... f(662) 252-6220
Horn LakeJames E. Holland 3101 Goodman Rd., Horn Lake 38637(662) 342-3541..... f(662) 342-3481
HoustonRichard G. Bennett P.O. Box 548, Houston 38851(662) 456-2328..... f(662) 456-9535

Indianola	Kuykendall H. Murry.....	P.O. Drawer 269, Indianola 38751-0269..	(662) 887-7622f(662) 887-6009
Inverness	Kuykendall H. Murry.....	P.O. Box 166, Inverness 38753	(662) 265-5741f(662) 265-6009
Isola	W.C. Trotter.....	P.O. Box 194, Isola 38754	(662) 962-7725f(662) 962-6133
Itta Bena	VACANT.....	P.O. Box 563, Itta Bena 38941.....	(662) 254-7231f(662) 254-6550
Iuka	Joey Cobb.....	118 S. Pearl St., Iuka 38852.....	(662) 423-3781f(662) 423-1430
Jackson	Henry C. Clay III.....	P.O. Box 17, Jackson 39205.....	(601) 960-1938f(601) 960-1939
	William Walker.....	P.O. Box 17, Jackson 39205.....	(601) 960-1938f(601) 960-1939
	Michael Malouf Jr.....	P.O. Box 17, Jackson 39205.....	(601) 960-1938f(601) 960-1939
	Bridget Clayton.....	P.O. Box 17, Jackson 39205.....	(601) 960-1938f(601) 960-1939
	Ali Shamsideen.....	P.O. Box 17, Jackson 39205.....	(601) 960-1938f(601) 960-1939
	Gerald Mumford.....	P.O. Box 17, Jackson 39205.....	(601) 960-1938f(601) 960-1939
Jonestown	Azki Shaw.....	P.O. Box 110, Jonestown 38639.....	(662) 358-4328f(662) 358-4520
Kilmichael	VACANT.....	P.O. Box 296, Kilmichael 39747	(662) 262-4242f(662) 262-4400
Kosciusko	L. Scott Pickle.....	222 East Washington St., Kosciusko 39090..	(662) 289-7935f(662) 289-7778
Lake	Todd Sorey.....	P.O. Box 39, Lake 39092	(601) 775-3552f(601) 775-3546
Lambert	Patricia Booker.....	P.O. Box 1198, Lambert 38643-1198	(662) 326-8018f(662) 326-8017
Laurel	Kyle Robertson.....	317 S. Magnolia, Laurel 39440.....	(601) 428-6517f(601) 399-4460
Leakesville	Joe Beard.....	301-A Lafayette Ave., Leakesville 39451	(601) 394-2383f(601) 394-2414
Leland	Michael L. Pruitt.....	P.O. Drawer 271, Leland 38756.....	(662) 378-1530f(662) 686-4570
Lena	Johnny Pope.....	P.O. Box 108, Lena 39094-0108.....	(601) 654-3332f(601) 654-3332
Lexington	Sarah Sterling Starns.....	104 Carpenter St., Lexington 39095	(601) 214-9597f(662) 834-3054
Liberty	Roger Arnold.....	P.O. Box 301, Liberty 39645.....	(601) 657-8071f(601) 657-8078
Long Beach	Bradley Rath.....	P.O. Box 929, Long Beach 39560-0929	(228) 865-7841f(228) 863-2771
Louin	Marvin Jones.....	P.O. Box 3, Louin 39338-0003.....	(601) 739-3630f(601) 739-3630
Louise	W.C. Trotter III.....	P.O. Box 338, Belzoni 39038-0338	(662) 247-1362f(662) 247-3333
Louisville	David T. Wilson Jr.....	P.O. Drawer 267, Louisville 39339.....	(662) 773-7142f(662) 773-8747
Lucedale	Martin Seib.....	545 Oak St., Lucedale 39452	(601) 947-3261f(601) 766-3337
Lumberton	Bill Anderson.....	P.O. Box 211, Lumberton 39455.....	(601) 796-8341f(601) 796-2323
Lyon	Joseph C. Gibbs.....	P.O. Box 1117, Clarksdale 38614.....	(662) 627-4146f(662) 483-1263
Maben	Bennie Jones Jr.....	P.O. Drawer L, Maben 39750	(662) 263-4212f(662) 263-4112
Macon	Timothy L. Gowan.....	P.O. Box 29, Macon 39341	(662) 726-5847f(662) 726-2409
Madison	Dale Danks Jr.	P.O. Box 2489, Madison 39130.....	(601) 707-1420f(601) 853-0067
	Jim Streetman.....	P.O. Box 2489, Madison 39130.....	(601) 707-1420f(601) 853-0067
Magee	Eugene Knight.....	123 Main Ave. N., Magee 39111	(601) 849-3344f(601) 849-6461
Magnolia	Lem E. Mitchell.....	180 S. Cherry, Magnolia 39652.....	(601) 783-5233f(601) 783-5236
Mantachie	John Bishop.....	123 Boreng Rd., Marietta 38856.....	(662) 282-7949f(662) 282-4296
Mantee	Jerry Jones.....	P.O. Box 2348, Mantee 39751.....	(662) 456-4548 No Fax
Marietta	Angela Pounds.....	P.O. Box 88, Marietta 38856-0088	(662) 728-9320f(662) 728-9329
Marion	Doug M. Engell.....	P.O. Box 310, Marion 39342-0035	(601) 483-9573f(601) 693-6399
Marks	Robert G. Roy.....	P.O. Box 315, Marks 38646.....	(662) 326-3161f(662) 326-3164
Mathiston	Buchanan Meek Jr.....	P.O. Box 178, Mathiston 39752-0178.....	(662) 263-4898f(662) 263-4873
McComb	Danny Smith.....	P.O. Box 667, McComb 39649.....	(601) 249-3386f(601) 684-1472
McLain	Jeff Byrd.....	P.O. Box 5, McLain 39456.....	(601) 753-2205f(601) 753-2205
Meadville	William J. Halford Jr.....	P.O. Box 309, Meadville 39653.....	(601) 384-5208f(601) 384-4749
Mendenhall	Christopher R. Purdum.....	P.O. Box 487, Mendenhall 39114.....	(601) 847-1212f(601) 847-1821
Meridian	Robert D. Jones.....	P.O. Box 1430, Meridian 39301.....	(601) 484-6811f(601) 484-6812
Merigold	James Strait.....	P.O. Box 348, Merigold 38759-0348	(662) 748-2765f(662) 748-2670
Metcalfe	Laverne Simpson.....	P.O. Box 250, Metcalfe 38760-0250.....	(662) 335-0212f(662) 378-8041
Mize	Hulon West.....	P.O. Box 68, Mize 39116-0068	(601) 733-2221f(601) 733-2220
Monticello	Albert Turnage.....	P.O. Box 822, Monticello 39654.....	(601) 587-0045f(601) 587-7731
Moorhead	Kuykendall H. Murry.....	P.O. Box 578, Moorhead 38761-0578.....	(662) 246-5461f(662) 246-5037
Morton	Wilbur McCurdy.....	97 W. First Ave., Morton 39117	(601) 469-4555f(601) 732-7188
Moss Point	Keith Miller.....	4412 Denny St., Moss Point 39563	(228) 762-8912f(228) 474-4520
Mound Bayou	Harold Ward.....	P.O. Box 680, Mound Bayou 38762-0680..	(662) 741-2193f(662) 741-2195
Mount Olive	VACANT.....	P.O. Box 510, Mount Olive 39119.....	(601) 797-3496f(601) 797-3035

Myrtle	Chris Childers	P.O. Box 127, Myrtle 38650-0127	(662) 988-2220.....	f(662) 988-2210
Natchez	Jim Blough	233 Devereaux Dr., Natchez 39120.....	(601) 445-7524.....	f(601) 442-3487
Nettleton	Mike Malski	124 Short Ave., Nettleton 38858	(662) 963-2605.....	f(662) 963-2168
New Albany	Stephen P. Livingston.....	P.O. Box 152, New Albany 38652.....	(662) 534-1035.....	f(662) 534-1063
New Augusta	David Myers.....	P.O. Box 401, New Augusta 39462.....	(601) 964-3710.....	f(601) 964-3719
New Hebron	Brad Boerner.....	P.O. Box 173, New Hebron 39140.....	(601) 694-2115.....	f(601) 694-2114
New Houlika	Gary Turner	P.O. Box 416, New Houlika 38850-0416.....	(662) 568-2745.....	f(662) 568-7951
Newton	Jason Mangum.....	P.O. Box 300, Newton 39345	(601) 683-2041.....	f(601) 683-7453
Noxapater	David T. Wilson Jr.....	P.O. Box 267, Louisville 39339	(662) 773-7142.....	f(662) 724-2697
Oakland	Gaines Baker	P.O. Box 57, Oakland 38948.....	(662) 623-8668.....	f(662) 623-9726
Ocean Springs	Matthew Mestayer	3810 Bienville Blvd., Ocean Springs 39564.....	(228) 875-5009.....	f(228) 230-1899
Okolona	Sumeka Thomas	P.O. Box 111, Okolona 38860.....	(662) 447-5461.....	f(662) 447-3956
Olive Branch	Leslie B. Shumake Jr.....	9189 Pigeon Roost, Olive Branch 38654.....	(662) 892-9500.....	f(662) 892-9511
	Jim McGarrah.....	9189 Pigeon Roost, Olive Branch 38654.....	(662) 892-9500.....	f(662) 892-9511
Osyka	Aubrey Rimes	P.O. Box 23, Osyka 39657.....	(601) 542-5041.....	f(601) 542-5832
Oxford	Lawrence Little.....	107 Courthouse Sq., Oxford 38655	(662) 232-2320.....	f(662) 232-2346
Pace	Harold Ward.....	P.O. Box 197, Mount Bayou 38762	(662) 723-6292.....	f(662) 723-6198
Pascagoula	Michael Fondren	611 Live Oak St., Pascagoula 39568	(228) 762-1020.....	f(228) 938-6703
Pass Christian	F. Phillip Whittmann IV	P.O. Drawer 368, Pass Christian 39571	(228) 452-3307.....	f(228) 452-3320
Pearl	Richard Redfern	2561 Old Brandon Rd., Pearl 39288.....	(601) 939-7000.....	f(601) 863-3215
	John Shirley	2561 Old Brandon Rd., Pearl 39288.....	(601) 939-7000.....	f(601) 863-3215
Pelahatchie	Mel Coxwell	P.O. Box 229, Pelahatchie 39145-0229	(601) 854-5224.....	f(601) 854-5266
Petal	Sheila Smallwood	127 W. 8th Ave., Petal 39465.....	(601) 582-5351.....	f(601) 582-8431
Philadelphia	Steve Cumberland	525 Main St, Philadelphia 39350	(601) 656-3612.....	f(601) 650-3581
Picayune	G. Gerald Cruthird.....	203 Goodyear Blvd, Picayune 39466.....	(601) 798-9773.....	f(601) 799-1896
Pickens	Jim Arnold.....	P.O. Box 297, Pickens 39146-0297	(662) 468-2171.....	f(662) 468-2172
Plantersville	John H. Sheffield.....	P.O. Box 507, Plantersville 38862.....	(662) 844-2012.....	f(662) 840-9565
Polkville	Jerry Baldwin.....	6606 Hwy. 13, Polkville 39117	(601) 537-3115.....	f(601) 537-3051
Pontotoc	Greg Brown.....	225 W. Reynolds St., Pontotoc 38863	(662) 488-4020.....	f(662) 489-0103
Pope	Jay Westfaul.....	P.O. Box 126, Pope 38658.....	(662) 563-4799.....	f(662) 563-5656
Poplarville	James Hal Breland.....	200 Hwy. 26 E., Poplarville 39470.....	(601) 795-1002.....	f(601) 795-0141
Port Gibson	Ben Andrews.....	P.O. Box 607, Port Gibson 39150.....	(601) 437-4234.....	f(601) 437-8667
Potts Camp	Ernest Cunningham.....	P.O. Box 57, Potts Camp 38659.....	(662) 333-7285.....	f(662) 333-7287
Prentiss	Albert Turnage	P.O. Box 1344, Prentiss 39474	(601) 792-5196.....	f(601) 792-5190
Puckett	Ken Fairly	P.O. Box 130, Puckett 39151	(601) 825-8074.....	f(601) 825-8085
Purvis	George Schmidt.....	P.O. Box 308, Purvis 39475.....	(601) 794-6512.....	f(601) 794-8003
Quitman	Jim Potuk	P.O. Box 16, Quitman 39355-0016.....	(601) 776-3728.....	f(601) 776-4016
Raleigh	Jerry Baldwin.....	P.O. Box 355, Raleigh 39153	(601) 782-4672.....	f(601) 782-4278
Raymond	Jimmy Morton.....	P.O. Box 10, Raymond 39154	(601) 857-0072.....	f(601) 857-0105
Richland	Richard Redfern	911 Town Square, Richland 39218	(601) 932-3100.....	f(601) 936-4614
Richton	Lindsey Carter.....	P.O. Box 493, Richton 39476.....	(601) 788-6015.....	f(601) 788-6080
Ridgeland	Harold B. McCarley Jr.....	115 W. School St., Ridgeland 39157	(601) 853-2001.....	f(601) 853-7954
	Robert W. Camp.....	115 W. School St., Ridgeland 39157	(601) 853-2001.....	f(601) 853-7954
Ripley	Sonny Meeks.....	500 S. Main St., Ripley 38663	(662) 837-3659.....	f(662) 837-2212
Rolling Fork	Bennie L. Richards.....	P.O. Box 310, Rolling Fork 39159.....	(662) 873-2814.....	f(662) 873-2920
Rosedale	James Strait.....	P.O. Box 370, Rosedale 38769-0370.....	(662) 759-6813.....	f(662) 759-6731
Salttillo	Dennis Voge.....	P.O. Box 1426, Salttillo 38866-1426	(662) 869-5454.....	f(662) 869-5470
Sandersville	David Lyons	P.O. Box 692, Sandersville 39477-0692.....	(601) 649-3068.....	f(601) 649-3622
Sardis	Rhea Tannehill	P.O. Box 306, Sardis 38666.....	(662) 487-2371.....	f(662) 487-3389
	Gaines Baker.....	P.O. Box 306, Sardis 38666.....	(662) 487-2371.....	f(662) 487-3389
Scooba	Mary Gully	P.O. Box 68, Scooba 39358.....	(662) 476-8451.....	f(662) 476-8281
Sebastopol	Bill Freeman	P.O. Box 112, Sebastopol 39359.....	(601) 625-7200.....	f(601) 625-8538
Senatobia	Charles N. Smith.....	131 N. Front St., Senatobia 38668	(662) 562-5057.....	f(662) 560-0355
Shannon	John H. Sheffield.....	P.O. Box 6, Shannon 38868.....	(662) 767-9747.....	f(662) 767-3206
Shaw	James Strait.....	P.O. Box 679, Shaw 38773-0679.....	(662) 754-3131.....	f(662) 754-5744

Shelby	James Strait.....	P.O. Box 43, Shelby 38774.....	(662) 398-5156.....	f(662) 398-7878
Sherman	Chris Childers	P.O. Box 397, Sherman 38869.....	(662) 840-9185.....	f(662) 842-2517
Shubuta	Katie Dickerson	P.O. Box 416, Shubuta 39360-0416.....	(601) 687-1536.....	f(601) 687-6400
Shuqualak	Dorothy Stewart.....	P.O. Box 64, Shuqualak 39361	(662) 793-4675.....	f(662) 793-4791
Smithville	Robert Fowlkes.....	36443 Hw 25 N., Smithville 38870-0125.....	(662) 651-4411	f(662) 651-5226
Snow Lake Shores	Gary McBride.....	P.O. Box 400, Ashland 38603-0400.....	(662) 224-3050	f(662) 224-3338
Soso	Cecelia Arnold	P.O. Box 791, Laurel 39441	(601) 729-2958.....	f(601) 426-3622
Southaven	David Delgado	8889 North West Dr., Southaven 38671	(662) 393-7042.....	f(662) 280-6536
Starkville	Rodney P. Faver.....	110 W. Main St., Starkville 39759.....	(662) 323-2525	No Fax
State Line	Charles Chapman	P.O. Box 95, State Line 39362-0095.....	(601) 848-7755.....	f(601) 848-7493
Stonewall	F.M. Mitts.....	P.O. Box 1059, Stonewall 39363-1059.....	(601) 659-7033.....	f(601) 659-7035
Sturgis	Marty Haug	P.O. Box 97, Sturgis 39769-0097	(662) 465-7970.....	f(662) 465-7972
Summit	Jose Simo.....	P.O. Box 517, Summit 39666	(601) 276-9511.....	f(601) 276-3502
Sumner	Denise Washington	P.O. Box 155, Sumner 38957	(662) 375-9452.....	f(662) 375-8200
Sumrall	George Gunter.....	P.O. Box 247, Sumrall 39482-0247.....	(601) 758-3591.....	f(601) 758-3581
Sunflower	Kuykendall Murray	P.O. Box 127, Sunflower 38778-0145.....	(662) 569-3388.....	f(662) 569-3711
Tailorsville	Hulon West	P.O. Box 358, Tailorsville 39168.....	(601) 785-6531.....	f(601) 785-2200
Tchula	Wesley T. Evans	P.O. Box 356, Tchula 39169	(662) 235-5112.....	f(662) 235-5263
Terry	Lee B. Agnew Jr.....	P.O. Box 327, Terry 39170	(601) 878-5521.....	f(601) 878-5535
Tishomingo	Phillip Whitehead	P.O. Box 70, Tishomingo 38873-0070.....	(662) 438-6402.....	f(662) 438-6403
Tunica	Jim McGarrh.....	P.O. Box 395, Tunica 38676	(662) 363-2432.....	f(662) 363-1090
Tupelo	Jay Weir	P.O. Box 765, Tupelo 38802-0765.....	(662) 841-6516.....	f(662) 841-6410
	Willie Alen.....	P.O. Box 765, Tupelo 38802-0765.....	(662) 841-6516.....	f(662) 841-6410
Tutwiler	Denise Washington	P.O. Box 176, Tutwiler 38963-0176.....	(662) 375-9452.....	f(662) 375-8200
Tylertown	Ryan Bruhl	P.O. Box 191, Tylertown 39667.....	(601) 876-5121.....	f(601) 876-9114
Union	Rex Gordon Jr.....	404 Bank St., Union 39365.....	(601) 774-9422.....	f(601) 774-3595
Utica	William Jordan	P.O. Box 335, Utica 39175-0335.....	(601) 885-8718.....	f(601) 885-2807
Vaiden	Dorothy Branch	P.O. Box 76, Vaiden 39176-0076.....	(662) 464-5266.....	f(662) 464-9436
Vardaman	Mark Ferguson	P.O. Box 194, Vardaman 38878-0194.....	(662) 682-7561.....	f(662) 682-7567
Verona	Shamika Thomas.....	P.O. Box 2363, Verona 38879.....	(662) 566-2211.....	f(662) 566-2209
Vicksburg	Toni Terrett.....	820 Veto St., Vicksburg 39180.....	(601) 636-2511.....	f(601) 801-3544
	Lewis H. Burke	820 Veto St., Vicksburg 39180.....	(601) 636-2511.....	f(601) 801-3544
	Mack Barner	820 Veto St., Vicksburg 39180.....	(601) 636-2511.....	f(601) 801-3544
Walls	Karen Carter	P.O. Box 35, Walls 38680.....	(662) 781-1282.....	f(662) 781-5444
Walnut	Jerome Brown.....	P.O. Box 540, Walnut 38683.....	(662) 223-4405.....	f(662) 223-4374
Walnut Grove	Kenneth Adcock.....	P.O. Box 69, Walnut Grove 39189.....	(601) 253-2321	f(601) 253-2385
Water Valley	Trent Howell.....	P.O. Box 888, Water Valley 38965.....	(662) 473-2431.....	f(662) 473-4909
Waveland	Preston (P.J.) Mauffray.....	335 Coleman Ave., Waveland 39576.....	(228) 466-0042.....	f(228) 467-3686
Waynesboro	Charles Chapman	714 Wayne St., Waynesboro 39367.....	(601) 735-3192.....	f(601) 735-6409
Webb	Denise Washington	P.O. Box 677, Webb 38966.....	(662) 375-8164.....	f(662) 375-9494
Weir	Andy Stephenson.....	P.O. Box 217, Weir 39772	(662) 547-6123.....	f(662) 547-6511
Wesson	Jeff Varas.....	P.O. Box 297, Wesson 39191	(601) 643-5221.....	f(601) 643-5201
West	Amy Gowan	P.O. Box 35, West 39192-0035	(662) 967-2308.....	f(662) 967-2307
West Point	Bennie L. Jones.....	P.O. Box 117, West 39773	(662) 494-6386.....	f(662) 494-1398
Wiggins	Sean Courtney.....	117 N. First St., Wiggins 39577.....	(601) 928-9588.....	f(601) 928-5460
Winona	Alan Devoe Lancaster	608 Summit St., Winona 38967-0446	(662) 283-2132.....	f(662) 283-3742
	Donald W. Bond.....	608 Summit St., Winona 38967-0446	(662) 283-2132.....	f(662) 283-3742
Woodville	David S. Crawford.....	P.O. Box 605, Woodville 39669.....	(601) 888-3338.....	f(601) 888-4488
Yazoo City	Lilli Evans-Bass.....	305 Mike Espy Dr., Yazoo City 39194.....	(662) 764-1131.....	f(662) 746-1568

DRUG COURTS

A drug court is a special court given the responsibility to handle cases involving drug-using offenders through comprehensive supervision, drug testing, treatment services and immediate sanctions and incentives.

Drug court participants undergo long-term treatment and counseling, sanctions, incentives, and frequent court appearances. Successful completion of the treatment program results in dismissal of the charges, reduced or set aside sentences, lesser penalties, or a combination of these. Most importantly, graduating participants gain the necessary tools to rebuild their lives. Because the problem of drugs and crime is much too broad for any single agency to tackle alone, drug courts rely upon the daily communication and cooperation of judges, court personnel, probation, and treatment providers.

Drug courts vary somewhat from one jurisdiction to another in terms of structure, scope, and target populations, but they all share three primary goals: (1) to reduce recidivism, (2) to reduce substance abuse among participants, and (3) to rehabilitate participants. Achieving these goals requires a special organizational structure. Specifically, the drug court model includes the following key components:

- *Incorporating drug testing into case processing.*
- *Creating a non-adversarial relationship between the defendant and the court.*
- *Identifying defendants in need of treatment and referring them to treatment as soon as possible after arrest.*
- *Providing access to a continuum of treatment and rehabilitation services.*
- *Monitoring abstinence through frequent, mandatory drug testing.*
- *Establishing a coordinated strategy to govern drug court responses to participants' compliance.*
- *Maintaining judicial interaction with each drug court participant.*
- *Monitoring and evaluating program goals and gauging their effectiveness.*
- *Continuing interdisciplinary education to promote effective drug court planning, implementation, and operations.*
- *Forging partnerships among drug courts, public agencies, and community-based organizations to generate local support and enhance drug court effectiveness.*

YOUTH COURTS

The Youth Courts deal with matters involving abuse and neglect of juveniles, as well as offenses committed by juveniles. Young people who have not reached the age of 18 may be subject to the Youth Court, although there are some exceptions. Some offenses which would be treated as crimes if committed by adults are known as delinquent acts when they involve juveniles.

In the 21 counties which have a County Court, those judges also serve as Youth Court judges. In counties which do not have a County Court, the Chancery Judge may hear Youth Court matters, or the Chancery Judge may appoint a lawyer to act in a judicial capacity as Youth Court Referee. The city of Pearl also has its own municipal Youth Court.

JUDICIAL RESOURCES

MISSISSIPPI COMMISSION ON JUDICIAL PERFORMANCE

660 North Street, Suite 104, Jackson 39202
 (601) 359-1273/f(601) 354-6277
 mailbox@judicialperformance.ms.gov
 Executive Director: Darlene D. Ballard

The Mississippi Commission of Judicial Performance (Commission) was created in 1979 by the Mississippi Legislature and the voters of the State of Mississippi by constitutional amendment. It was created to enforce the standards of judicial conduct, inquire into judicial liability and conduct, protect the public from judicial misconduct and disabled judges, and protect the judiciary from unfounded allegations. All proceedings before the Commission are of a civil nature, not criminal, as the purpose of the Commission is to be rehabilitative and educational as well as disciplinary.

Chairman: Rick J. Coulter

Vice Chairman: Judge James L. Roberts Jr.

Commission Members: Jeffery M. Adcock, Judge Vicki R. Barnes, Roy D. Campbell III, Judge Kent McDaniel, Judge Jimmy Morton; Alternate Members: Judge Cynthia Brewer, Judge John H. Emfinger, Cornelia Gayden, Colonel Silvanus Johnson (retired), Judge Richelle Lumpkin, Karen K. Sawyer, Judge Edwin Woods Jr.

MISSISSIPPI JUDICIAL COLLEGE

P.O. Box 1848, University 38677

(662) 915-5955/f(662) 915-7845

mjc.olemiss.edu

The Judicial College, a division of the University of Mississippi School of Law, is the state's provider of continuing legal judicial education and training for some 2,800 court-related personnel. It is funded annually by more than \$1 million through the State Court Education Fund. Founded in the 1970s, it was the first full-time state judicial education program in the U.S.

MISSISSIPPI JUDICIAL APPOINTMENTS ADVISORY COMMITTEE

P.O. Box 139, Jackson 39205

(601) 359-3150/f(601) 359-3741

Ref. Executive Order 914

Chair: Bill Smith

Committee Members: Rick Barry, Amy Champagne, Ralph Chapman, Jerry Davis, Bill Davis, Andrew Dulaney, Mark Garriga, Margaret Sams Gratz, Joy Wolfe Graves, John Harral, Jimmy Heidelberg, Hugh Keating, Tony Lawrence, Sam McHard, Mike McPhail, Doug Minor, Larry Moffett, Harold Pizzetta, Bennie Richard, Andy Taggart, Ben Taylor, Blake Teller, Barbara Wallace, Robert Wilkinson, J. Chadwick Williams, Lew Yoder

MISSISSIPPI JUDICIAL ADVISORY STUDY COMMITTEE

P.O. Box 117, Jackson 39205

(601) 576-4630/f(601) 576-4639

wweaver@mssc.state.ms.us

The Judicial Advisory Study Committee was established to make recommendations to the Administrative Office of Courts in the administration of the courts; to conduct research relating to the improvement of the State's judicial system; and to make policy recommendations to promote the administration of justice and courts operation.

Chairman: Judge Eugene Fair

Vice Chairman: G. Gerald Cruthird

Committee Members: James 'Sandy' Brister, Jill Gilbert, Judge John Grant, Judge Ed Hannan, Lee Harper, Judge John Hudson, Donna Jill Johnson, Ken Lefoldt, Noelle McKinnon, Julie McLemore, J. Scott Newton, Judge Lamar Pickard, Judge Lillie Blackmon Sanders, Aleita Sullivan Fitch, Larry Swales, Judge Hulon West, Latrice Westbrooks, Representative Mark Baker, Senator Sean J. Tindell

