

Mississippi State Emblems & Symbols



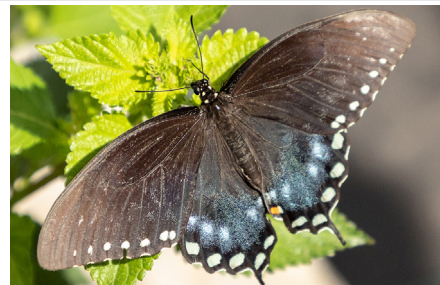
State Coat-of-Arms

Mississippi's Coat-of-Arms was adopted in 1894. Inscribed on the scroll is the state motto - Virtute et Armis - "By Valor and Arms."



The Great Seal

The State Seal has been in use since Mississippi became a state in 1817. In 2014, the legislature passed a law adding "In God We Trust" to the seal.



State Butterfly

Chosen in 1991, the spicebush swallowtail is Mississippi's official state butterfly.



State Bird

Found in all sections of Mississippi, the cheerful mockingbird was selected as the official State Bird by the Women's Federated Clubs and by the State Legislature in 1944.

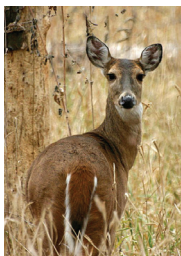


State Flower and Tree

In 1900, the school children of Mississippi elected the magnolia as the official State Flower. In 1952, the Legislature selected the magnolia as the official State Tree.



State Fish - Largemouth or Black Bass



State Land Mammal

White-tailed Deer and Red Fox



State Water Mammal

Bottlenosed Dolphin



State Waterfowl - Wood Duck

State Song - "Go Mississippi"

State Insect - Honeybee

State Shell - Oyster Shell

State Fossil - Prehistoric Whale

State Beverage - Milk

State Stone - Petrified Wood

State Butterfly - Spice Swallowtail

State Dance - Square-Dancing

State Toy - Teddy Bear

State Soil - Natchez Silt Loam

State Reptile - American Alligator

State Language - English

State Wildflower - Coreopsis

State Grand Opera House - Grand Opera House of Meridian

State Historical Industrial Museum - Mississippi Industrial Heritage Museum

State Wildlife Heritage Museum - Leland



Michael Watson
SECRETARY OF STATE

Published by the Office of the Mississippi Secretary of State.

For more information, visit the Secretary of State's website www.sos.ms.gov or contact our Office at (601) 359-1350.